

**ALIZEH**
BOLD & BEAUTIFUL



The white Bride

The White Bride

D.No.	Color	Blouse Fabric	Lehenga Fabric	Dupatta Fabric	Description	Work	Rate
1001-D	Off White	Net With Silk Satin Inner	Net With Silk Satin 2 Layer Inner With Heavy Quality Can-Can	Net	A Stunning Lehenga With Beautiful Cording Embroidered Blouse,Cutwork Dupatta And Heavy Stonework Embellished,Designed Specially For Wedding Season	Cording Embroidery	5395/-
1001-E	Golden	Net With Silk Satin Inner	Net With Silk Satin 2 Layer Inner With Heavy Quality Can-Can	Net	A Stunning Lehenga With Beautiful Cording Embroidered Blouse,Cutwork Dupatta And Heavy Stonework Embellished,Designed Specially For Wedding Season	Cording Embroidery	5395/-
1002-D	Off White	Net With Silk Satin Inner	Net With Silk Satin 2 Layer Inner With Heavy Quality Can-Can	Net	A Stunning Lehenga With Beautiful Cording Embroidered Blouse,Cutwork Dupatta And Heavy Stonework Embellished,Designed Specially For Wedding Season	Cording Embroidery	5725/-
1002-E	Golden	Net With Silk Satin Inner	Net With Silk Satin 2 Layer Inner With Heavy Quality Can-Can	Net	A Stunning Lehenga With Beautiful Cording Embroidered Blouse,Cutwork Dupatta And Heavy Stonework Embellished,Designed Specially For Wedding Season	Cording Embroidery	5725/-
1003-D	Off White	Net With Silk Satin Inner	Net With Silk Satin 2 Layer Inner With Heavy Quality Can-Can	Net	A Stunning Lehenga With Beautiful Cording Embroidered Blouse,Cutwork Dupatta And Heavy Stonework Embellished,Designed Specially For Wedding Season	Cording Embroidery	5975/-
1003-E	Golden	Net With Silk Satin Inner	Net With Silk Satin 2 Layer Inner With Heavy Quality Can-Can	Net	A Stunning Lehenga With Beautiful Cording Embroidered Blouse,Cutwork Dupatta And Heavy Stonework Embellished,Designed Specially For Wedding Season	Cording Embroidery	5975/-
1004-D	Off White	Net With Silk Satin Inner	Net With Silk Satin 2 Layer Inner With Heavy Quality Can-Can	Net	A Stunning Lehenga With Beautiful Cording Embroidered Blouse,Cutwork Dupatta And Heavy Stonework Embellished,Designed Specially For Wedding Season	Cording Embroidery	5925/-
1004-E	Golden	Net With Silk Satin Inner	Net With Silk Satin 2 Layer Inner With Heavy Quality Can-Can	Net	A Stunning Lehenga With Beautiful Cording Embroidered Blouse,Cutwork Dupatta And Heavy Stonework Embellished,Designed Specially For Wedding Season	Cording Embroidery	5925/-
1004-F	Violet	Net With Silk Satin Inner	Net With Silk Satin 2 Layer Inner With Heavy Quality Can-Can	Net	A Stunning Lehenga With Beautiful Cording Embroidered Blouse,Cutwork Dupatta And Heavy Stonework Embellished,Designed Specially For Wedding Season	Cording Embroidery	5925/-
1004-G	Mint Green	Net With Silk Satin Inner	Net With Silk Satin 2 Layer Inner With Heavy Quality Can-Can	Net	A Stunning Lehenga With Beautiful Cording Embroidered Blouse,Cutwork Dupatta And Heavy Stonework Embellished,Designed Specially For Wedding Season	Cording Embroidery	5925/-
10 Pieces					(Blouse Stitch up to 46 inches bust & length 16 inch) (Lehenga Stitch up to 44 inches waist & Flair 3.5 mtr)	Total	57890/- (GST Extra)



1001-D



1001-E



1002-D



1004-D



1004-E



1002-E



1003-D



1003-E



1004-F



1004-G

ALIZEH
The white Bride

ALIZEH 1001-E



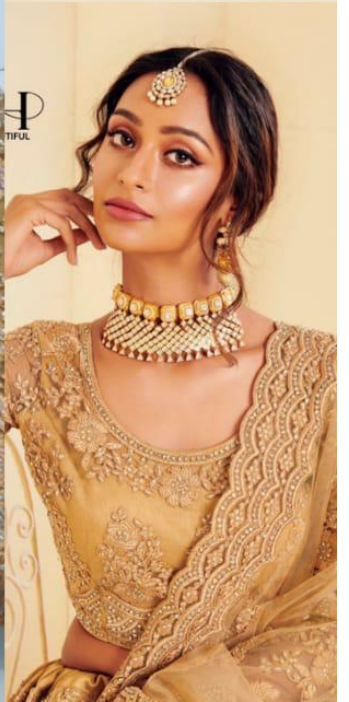
ALIZEH 1004-E



ALIZEH 1003-D



ALIZEH 1003-E



ALIZEH 1004-D



ALIZEH 1001-D



ALIZEH 1002-D



ALIZEH 1002-E



ALIZEH 1004-F





This season, your look gets better definition with just a little attention to detail

1004-F

ALIZEH
BY ANITA DOLY



*The contemporary design for the fashion conscious woman while preserving
the traditional art and culture of India*

1003-E







The white Bride

The collection seamlessly creates an ambiance of style & grace
embellished immaculately with fine work



ALIZEH
BY ANITA DIXIT



*The glamour is something which will fulfill all the requirement
for classy & trendy look*

1004-G



ALIZEH
WEDDING WEAR



*Fashionable tributes to color & silhouettes that
have inspired trends around the world.*

1004-D



ALIZEE
by ALI SAJJAD



*Different cultures come together in a tribute to fashion's
biggest moment this season*

1004-E

