

FABRIC DETAILS
TOP- FOX GEORGETTE
BOTTOM - JACQUARD
INNER-SANTOON
DUPPTA- BUTTERFLY NET

Rose **BRIDAL**
S-73



WASHING INSTRUCTIONS

DO NOT USE ANY TYPE OF BLEACH OR STAIN REMOVING CHEMICALS BEFORE CUTTING / STITCHING, FABRIC SHOULD BE SOAKED IN WATER (ALL COMPONENTS SEPARATELY) FOR 15 MINUTES
 DO NOT KEEP WET FABRIC IN TWISTED FORM IN ORDER TO AVOID COPY MARKS |
 WASH COLOURED AND WHITE FABRICS SEPARATELY
 IRON CLOTHES AT MODERATE TEMPERATURE | DO NOT DRY FABRIC IN DIRECT SUNLIGHT
 (EXTRA LACES, HANGINGS AND ACCESSORIES ARE NOT INLUDED)

U

HELLO TO EVERYONE



S-73 A



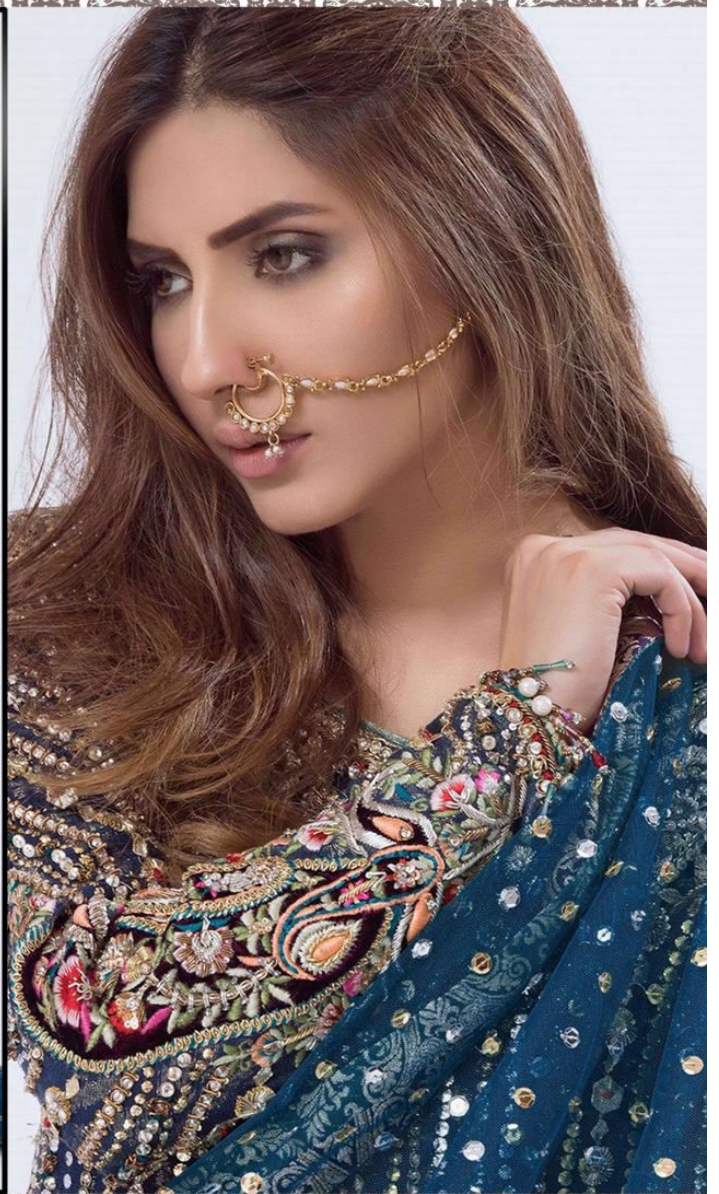
S-73 B



S-73 C

Rose BRIDAL

S-73



FABRIC DETAILS
TOP- FOX GEORGETTE
BOTTOM - JACQUARD
INNER-SANTOON
DUPPTA- BUTTERFLY NET

Rose **BRIDAL**
S-73



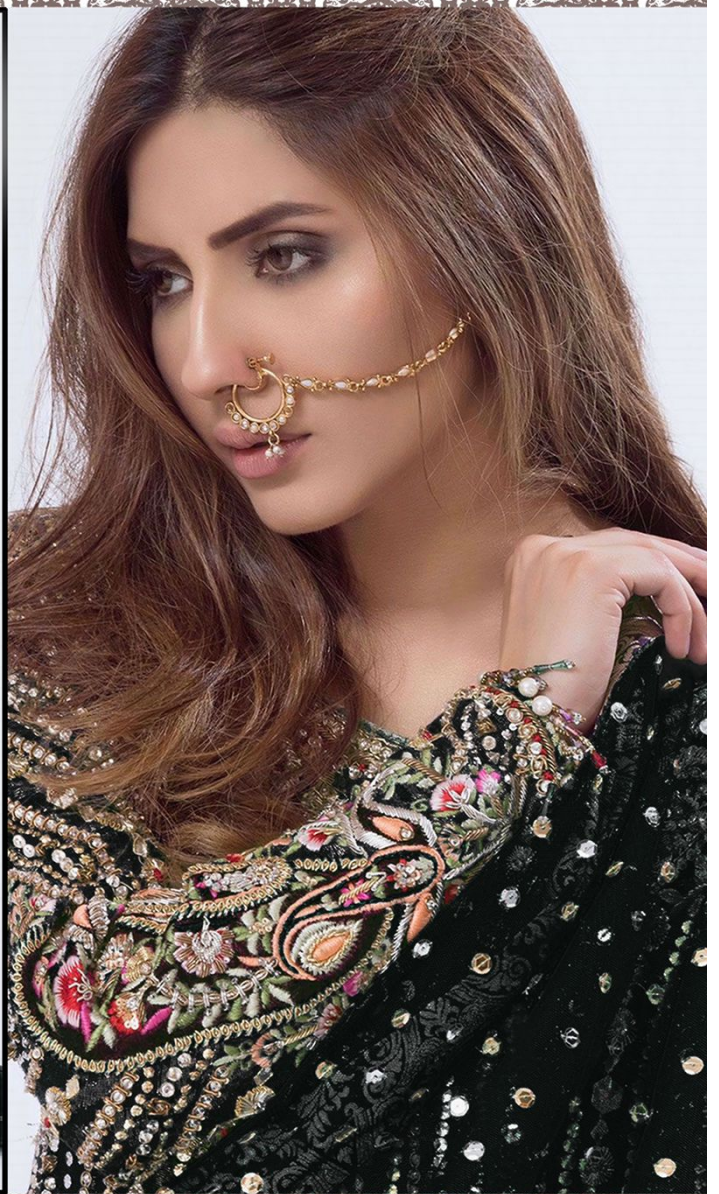
WASHING INSTRUCTIONS

DO NOT USE ANY TYPE OF BLEACH OR STAIN REMOVING CHEMICALS BEFORE CUTTING / STITCHING, FABRIC SHOULD BE SOAKED IN WATER (ALL COMPONENTS SEPARATELY) FOR 15 MINUTES
 DO NOT KEEP WET FABRIC IN TWISTED FORM IN ORDER TO AVOID COPY MARKS |
 WASH COLOURED AND WHITE FABRICS SEPARATELY
 IRON CLOTHES AT MODERATE TEMPERATURE | DO NOT DRY FABRIC IN DIRECT SUNLIGHT
 (EXTRA LACES, HANGINGS AND ACCESSORIES ARE NOT INLUDED)

U




SHANAYA[®]



FABRIC DETAILS
 TOP- FOX GEORGETTE
 BOTTAM - JACQUARD
 INNER-SANTOON
 DUPPTA- BUTTERFLY NET

Rose **BRIDAL**
 S-73 C



WASHING INSTRUCTIONS

DO NOT USE ANY TYPE OF BLEACH OR STAIN REMOVING CHEMICALS
 BEFORE CUTTING / STITCHING , FABRIC SHOULD BE SOAKED IN WATER
 (ALL COMPONENTS SEPARATELY) FOR 15 MINUTES
 DO NOT KEEP WET FABRIC IN TWISTED FROM IN ORDER TO AVOID COPY MARKS |
 WASH COLOURED AND WHITE FABRICS SEPARATELY
 IRON CLOTHES AT MODERATE TEMPERATURE | DO NOT DRY FABRIC IN DIRECT SUNLIGHT
 (EXTRA LACES, HANGINGS AND ACCESSORIES ARE NOT INLUDED)

U



SHANAYA

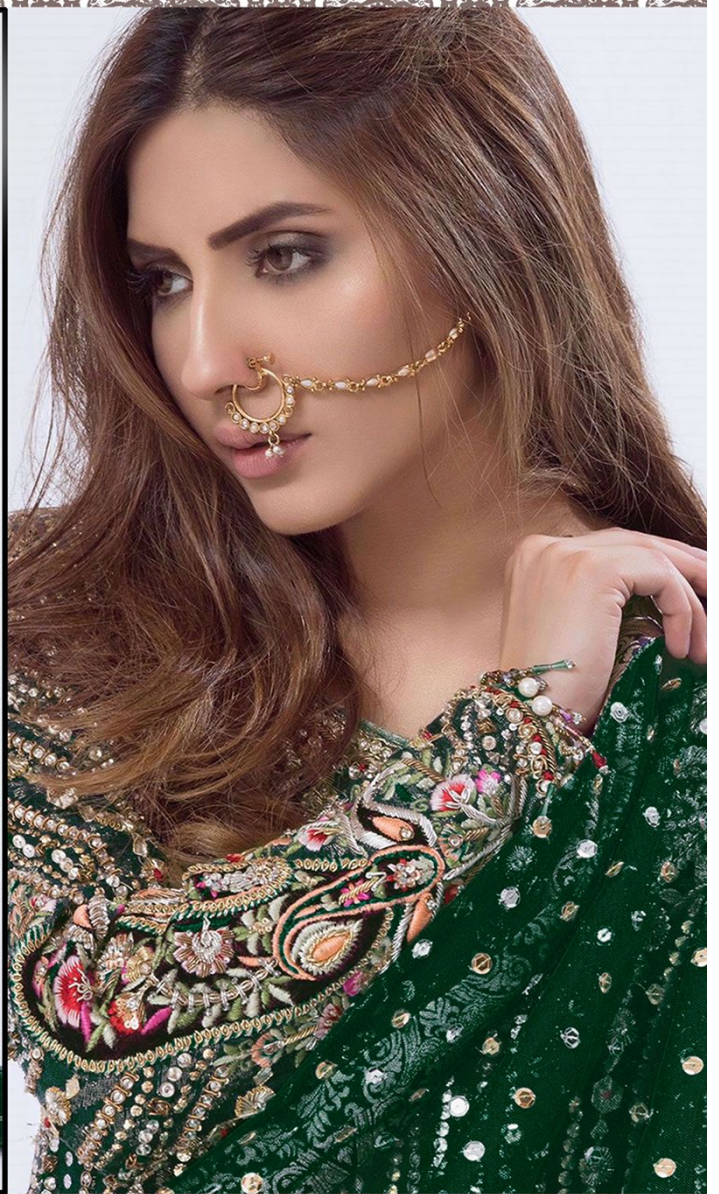
Rose BRIDAL S-73

FABRIC DETAILS
SILK, NET, CHROME DYE
MUSLIN, LACE, TISSUE
DUPPIE, BUTTERFLY CUT

CARE INSTRUCTIONS
WASH IN COLD WATER
DO NOT BLEACH
DO NOT TUMBLE DRY
DO NOT IRON
DO NOT DRY CLEAN




SHANAYA®



FABRIC DETAILS

TOP- FOX GEORGETTE
BOTTOM - JACQUARD
INNER-SANTOON
DUPPTA- BUTTERFLY NET

Rose **BRIDAL**
S-73 B

WASHING INSTRUCTIONS

DO NOT USE ANY TYPE OF BLEACH OR STAIN REMOVING CHEMICALS
 BEFORE CUTTING / STITCHING , FABRIC SHOULD BE SOAKED IN WATER
 (ALL COMPONENTS SEPARATELY) FOR 15 MINUTES
 DO NOT KEEP WET FABRIC IN TWISTED FROM IN ORDER TO AVOID COPY MARKS |
 WASH COLOURED AND WHITE FABRICS SEPARATELY
 IRON CLOTHES AT MODERATE TEMPERATURE | DO NOT DRY FABRIC IN DIRECT SUNLIGHT
 (EXTRA LACES, HANGINGS AND ACCESSORIES ARE NOT INLUDED)

U



SHANAYA

ROSE BRIDAL
S-73

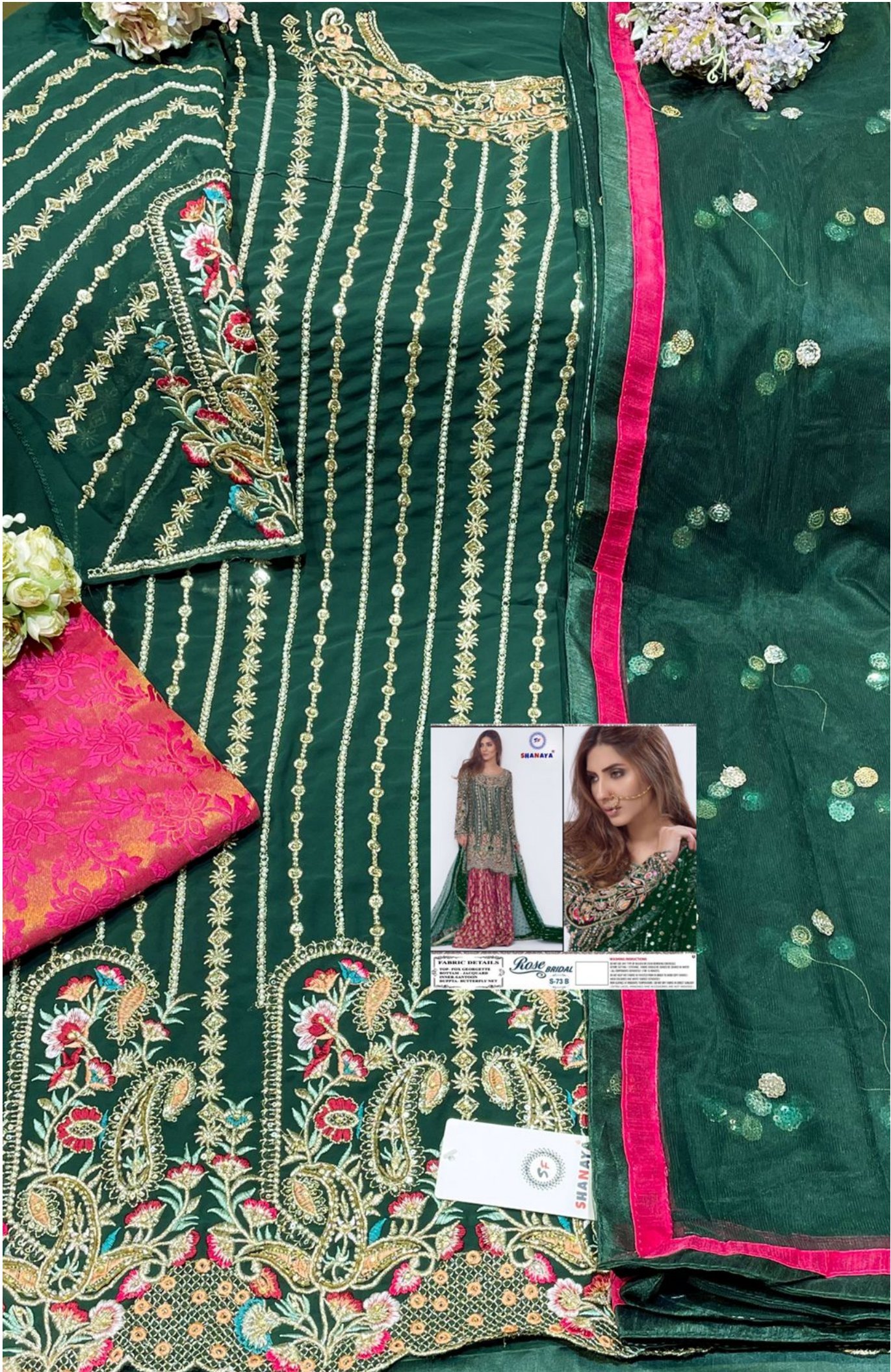
FABRIC DETAILS
TOP: POOL COTTON
MIDLE: LACONAD
BOTTOM: BUTTERFLY NET

SIZE
S: 34-36"
M: 36-38"
L: 38-40"
XL: 40-42"
XXL: 42-44"

CARE
WASH IN COLD WATER
DO NOT BLEACH
IRON ON LOW HEAT
DRY IN SHADE







SHANAYA

FABRIC DETAILS
TOP: 100% COTTON
BOTTOM: POLYESTER
INNER LAYER: NYLON
TRIM: BUTTERFLY NET

Rose BRIDAL
S-73 B

SHANAYA



ANAYA

Rose BRIDAL

FABRIC: DRY CLEAN
CARE: DRY CLEAN
MADE IN INDIA

SF

ANAYA