



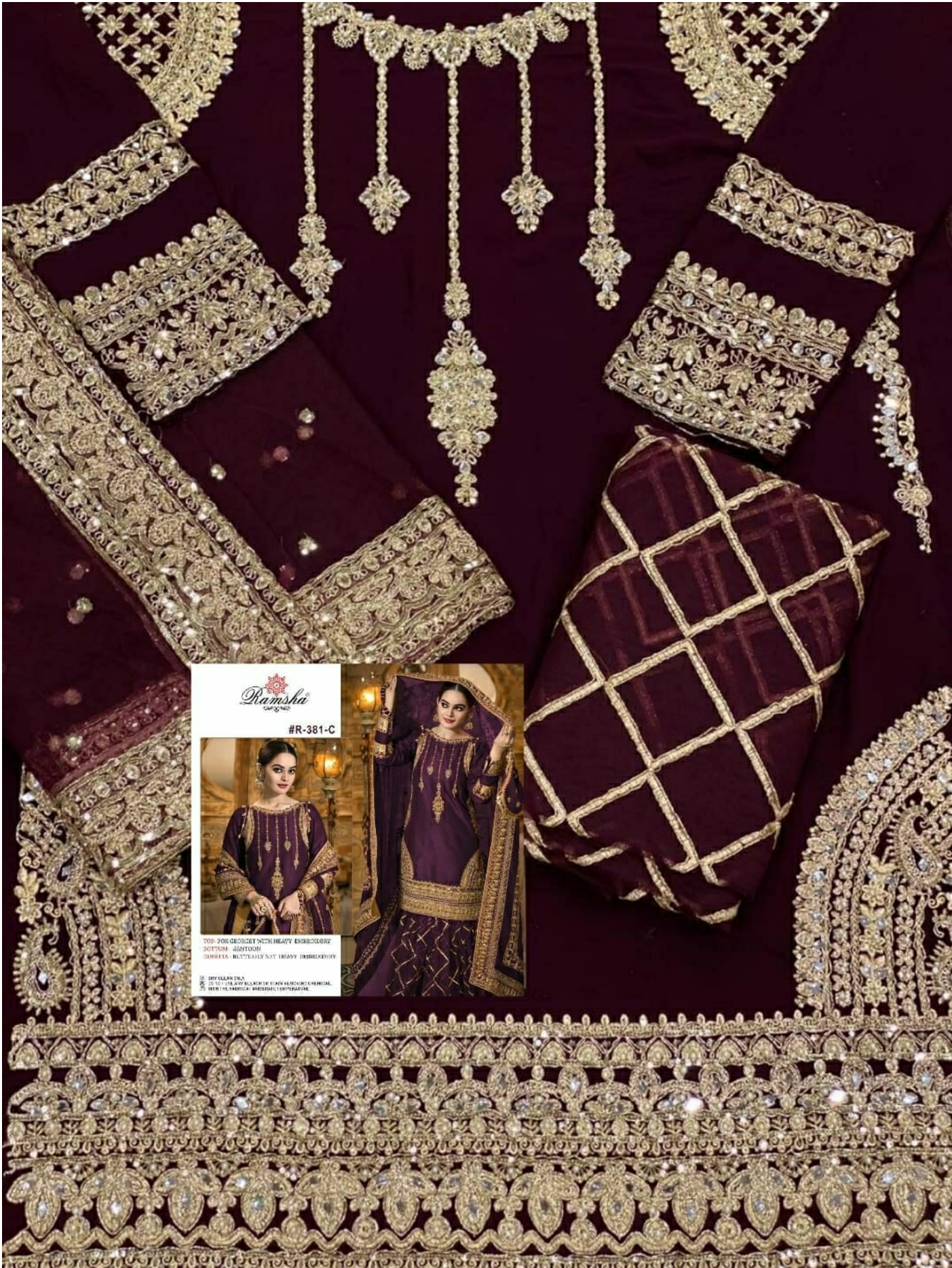
#R-381-C



TOP- FOX GEORGET WITH HEAVY EMBROIDERY
BOTTOM- SANTOON
DUPATTA - BUTTERFLY NET HEAVY EMBROIDERY

Ⓟ DRY CLEAN ONLY.
ⓧ DO NOT USE ANY BLEACH OR STAIN REMOVING CHEMICAL.
Ⓛ IRON THE FABRIC AT MODERATE TEMPERATURE.





Ramsha
#R-381-C

TOP: FOK GEOMET WITH HEAVY EMBROIDERY
BOTTOM: GEOMET
DUPHTA: BUTTERFLY NET HEAVY EMBROIDERY

☐ DRY CLEAN ONLY
☐ DO NOT USE A WY BLEACHER OR ANY ALKALINE CHEMICAL
☐ IRON IN FABRIC'S SHAPED AS DIRECTED



Ramsha
#R-381-D



TOP: FOX COLORET WITH HEAVY EMBROIDERY
BOTTOM: SAREE/COOTY
BLUSON: SUTTERHEAVY SUE HEAVY EMBROIDERY

© 2015 RAMSHA
© 2015 HEAVY EMBROIDERY IN SUEE/COOTY/BLUSON
© 2015 THE SUEE/COOTY/BLUSON SUEE/COOTY/BLUSON



#R-381-C



TOP- FOX GEORGET WITH HEAVY EMBROIDERY
BOTTOM- SANTOON
DUPATTA - BUTTERFLY NET HEAVY EMBROIDERY



Ⓟ DRY CLEAN ONLY.
ⓧ DO NOT USE ANY BLEACH OR STAIN REMOVING CHEMICAL.
☎ IRON THE FABRIC AT MODERATE TEMPERATURE.



#R-381-D



TOP- FOX GEORGET WITH HEAVY EMBROIDERY
BOTTOM- SANTOON
DUPATTA - BUTTERFLY NET HEAVY EMBROIDERY

Ⓟ DRY CLEAN ONLY.
ⓧ DO NOT USE ANY BLEACH OR STAIN REMOVING CHEMICAL.
Ⓡ IRON THE FABRIC AT MODERATE TEMPERATURE.

