



#R-382-D



TOP- FOX GEORGATTE WITH HEAVY EMBROIDERY
BOTTOM- SANTOON
DUPATTA - BUTTERFLY NET HEAVY EMBROIDERY



Ⓟ DRY CLEAN ONLY.
ⓧ DO NOT USE ANY BLEACH OR STAIN REMOVING CHEMICAL.
☎ IRON THE FABRIC AT MODERATE TEMPERATURE.



#R-382-D



TOP- FOX GEORGATTE WITH HEAVY EMBROIDERY
BOTTOM- SANTOON
DUPATTA - BUTTERFLY NET HEAVY EMBROIDERY

- Ⓟ DRY CLEAN ONLY.
- ✘ DO NOT USE ANY BLEACH OR STAIN REMOVING CHEMICAL.
- ☎ IRON THE FABRIC AT MODERATE TEMPERATURE.



#R-382-G

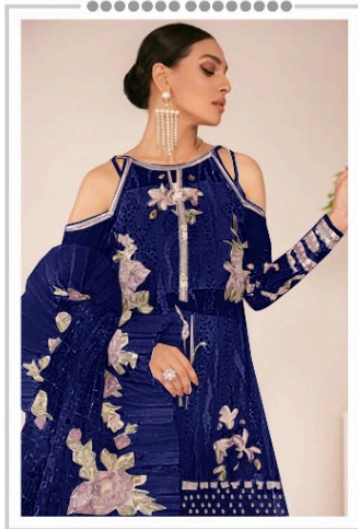


TOP- FOX GEORGATTE WITH HEAVY EMBROIDERY
BOTTOM- SANTOON
DUPATTA - BUTTERFLY NET HEAVY EMBROIDERY



Ⓟ DRY CLEAN ONLY.
ⓧ DO NOT USE ANY BLEACH OR STAIN REMOVING CHEMICAL.
☎ IRON THE FABRIC AT MODERATE TEMPERATURE.

Ramsha®
382-NX



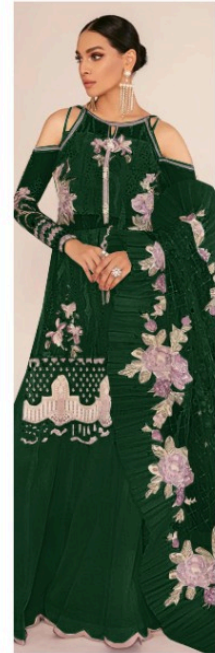
Ramsha®
382-NX



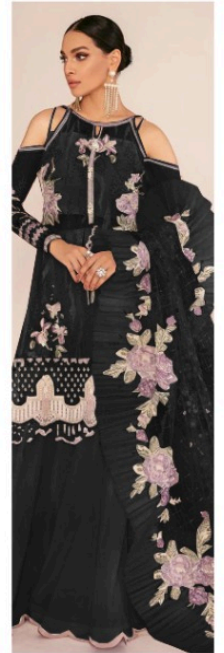
#R-382-D



#R-382-E



#R-382-F



#R-382-G



#R-382-E



TOP- FOX GEORGATTE WITH HEAVY EMBROIDERY
BOTTOM- SANTOON
DUPATTA - BUTTERFLY NET HEAVY EMBROIDERY



Ⓟ DRY CLEAN ONLY.
ⓧ DO NOT USE ANY BLEACH OR STAIN REMOVING CHEMICAL.
🧊 IRON THE FABRIC AT MODERATE TEMPERATURE.



#R-382-F



TOP- FOX GEORGATTE WITH HEAVY EMBROIDERY
BOTTOM- SANTOON
DUPATTA - BUTTERFLY NET HEAVY EMBROIDERY

- Ⓟ DRY CLEAN ONLY.
- ✘ DO NOT USE ANY BLEACH OR STAIN REMOVING CHEMICAL.
- ☎ IRON THE FABRIC AT MODERATE TEMPERATURE.