



#R-422-C



TOP- GEORGET WITH HEAVY EMBROIDERY

BOTTOM- DULL SANTOON

DUPATTA - NAJMEEN EMBROIDERY WORK

- Ⓟ DRY CLEAN ONLY.
- ✂ DO NOT USE ANY BLEACH OR STAIN REMOVING CHEMICAL.
- ☎ IRON THE FABRIC AT MODERATE TEMPERATURE.



#R-422-A



TOP- GEORGET WITH HEAVY EMBROIDERY

BOTTOM- DULL SANTOON

DUPATTA - NAJMEEN EMBROIDERY WORK

- Ⓟ DRY CLEAN ONLY.
- ✘ DO NOT USE ANY BLEACH OR STAIN REMOVING CHEMICAL.
- ☎ IRON THE FABRIC AT MODERATE TEMPERATURE.



#R-422-B



TOP- GEORGET WITH HEAVY EMBROIDERY
BOTTOM- DULL SANTOON
DUPATTA - NAJMEEN EMBROIDERY WORK

- Ⓟ DRY CLEAN ONLY.
- ✖ DO NOT USE ANY BLEACH OR STAIN REMOVING CHEMICAL.
- ☎ IRON THE FABRIC AT MODERATE TEMPERATURE.



#R-422-C



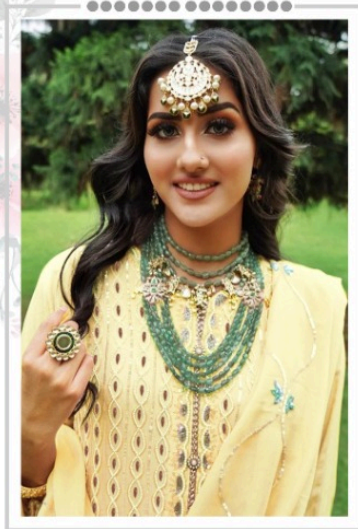
TOP- GEORGET WITH HEAVY EMBROIDERY

BOTTOM- DULL SANTOON

DUPATTA - NAJMEEN EMBROIDERY WORK

- Ⓟ DRY CLEAN ONLY.
- ✘ DO NOT USE ANY BLEACH OR STAIN REMOVING CHEMICAL.
- ☎ IRON THE FABRIC AT MODERATE TEMPERATURE.

Ramsha®
422-NX



Ramsha®
422-NX



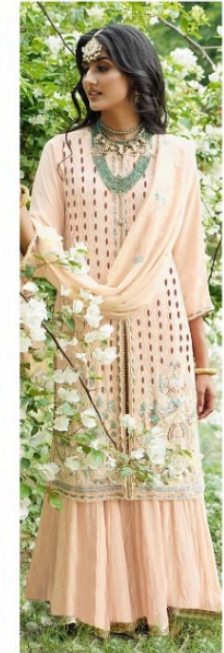
#R-422-A



#R-422-B



#R-422-C



#R-422-D



#R-422-D



TOP- GEORGET WITH HEAVY EMBROIDERY
BOTTOM- DULL SANTOON
DUPATTA - NAJMEEN EMBROIDERY WORK

Ⓟ DRY CLEAN ONLY.
ⓧ DO NOT USE ANY BLEACH OR STAIN REMOVING CHEMICAL.
Ⓡ IRON THE FABRIC AT MODERATE TEMPERATURE.



Emb Front

Emb Chiffon Dupatta

Emb Sleeves

Patch



Emb Chiffon Dupatta

Emb Front

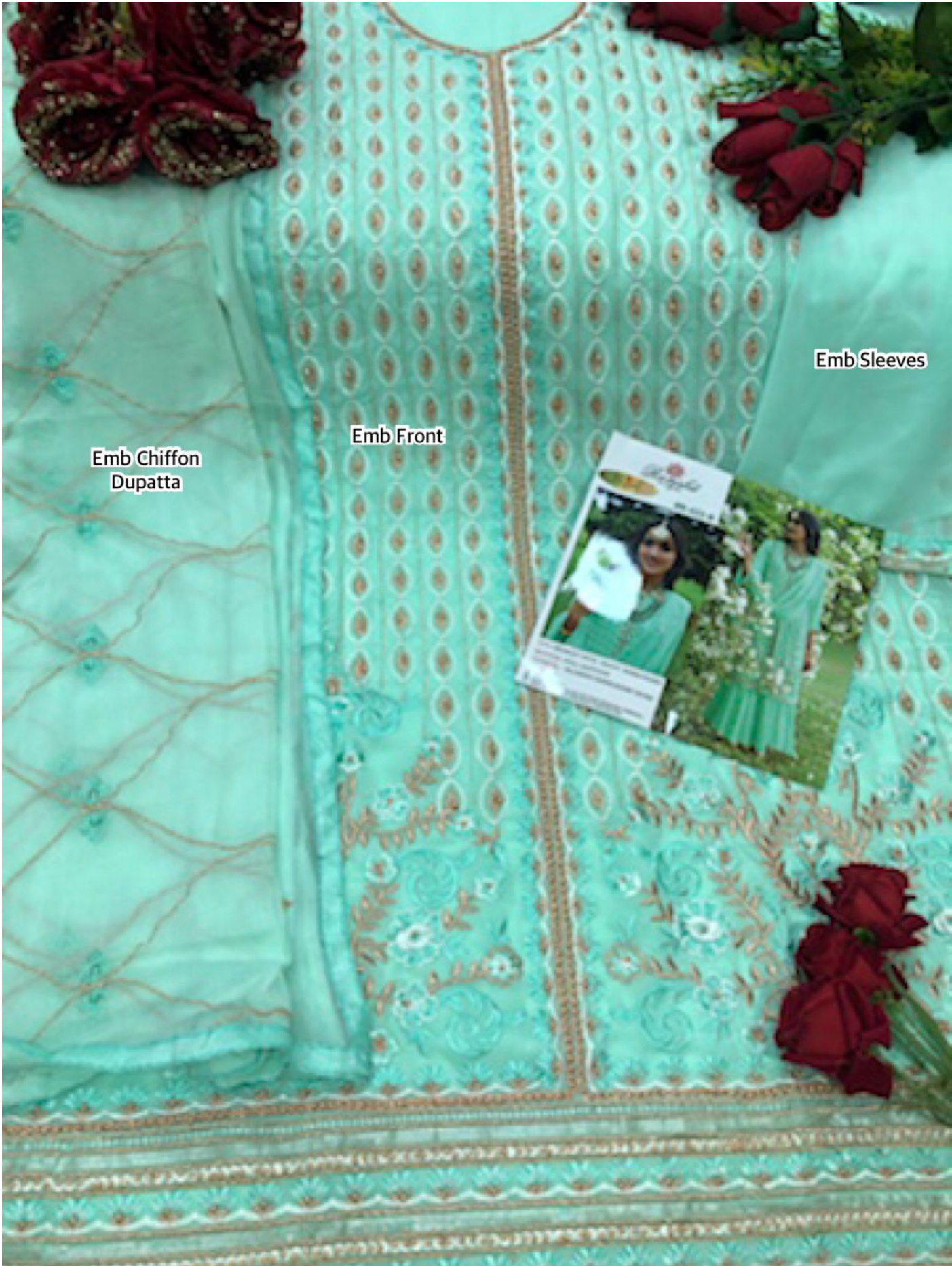
Emb Sleeves

Ranika
#R-422-C



TOP- GEORGET WITH HEAVY EMBROIDERY
BOTTOM- FULL SANTONIN
DUPATTA - MAJHEEN EMBROIDERY WORK

☞ WASH IN COLD WATER
☞ DO NOT BLEACH OR USE STAIN REMOVING CHEMICALS
☞ IRON AT MODERATE TEMPERATURE



Emb Chiffon
Dupatta

Emb Front

Emb Sleeves



Emb Front

Emb Sleeves

Emb Chiffon Dupatta

Rajmishra
#R-422-D

TOP- GEORGET WITH HEAVY EMBROIDERY
BOTTOM- DULA SANTOON
DUPATTA - RAJMEEN EMBROIDERY WORK

DO NOT CLEAN WITH BLEACH OR STAIN REMOVING CHEMICAL.
DO NOT USE IRON AT ANY TIME. MAKE TO TAKE CARE.