



S-92 B *Rose*
AYNOOR

WASHING INSTRUCTIONS

DO NOT USE ANY TYPE OF BLEACH OR STAIN REMOVING CHEMICALS
BEFORE CUTTING / STITCHING , FABRIC SHOULD BE SOAKED IN WATER
(ALL COMPONENTS SEPARATELY) FOR 15 MINUTES
DO NOT KEEP WET FABRIC IN TWISTED FROM IN ORDER TO AVOID COPY MARKS |
WASH COLOURED AND WHITE FABRICS SEPARATELY
IRON CLOTHES AT MODERATE TEMPERATURE | DO NOT DRY FABRIC IN DIRECT SUNLIGHT
(EXTRA LACES, HANGINGS AND ACCESSORIES ARE NOT INLUDED)



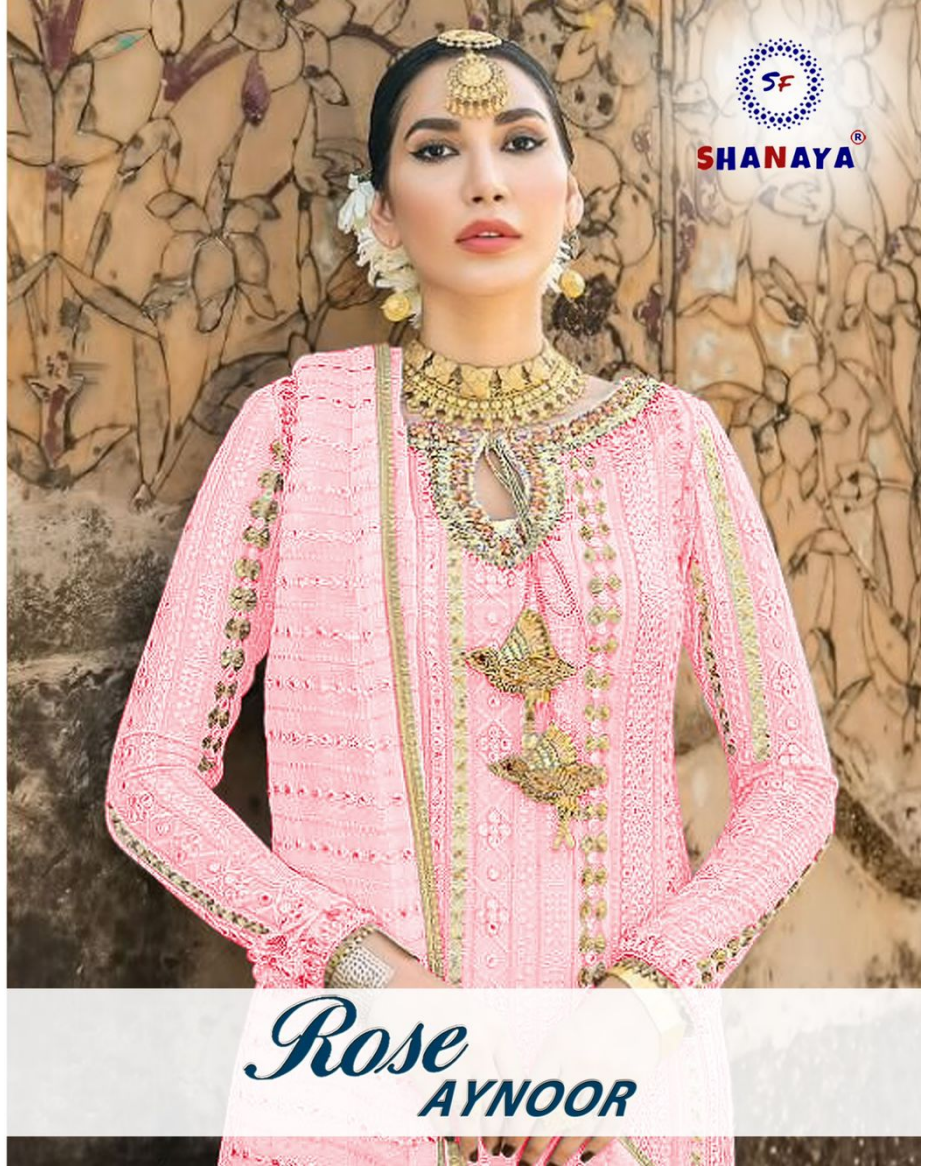
S-92 A



S-92 B



S-92 C

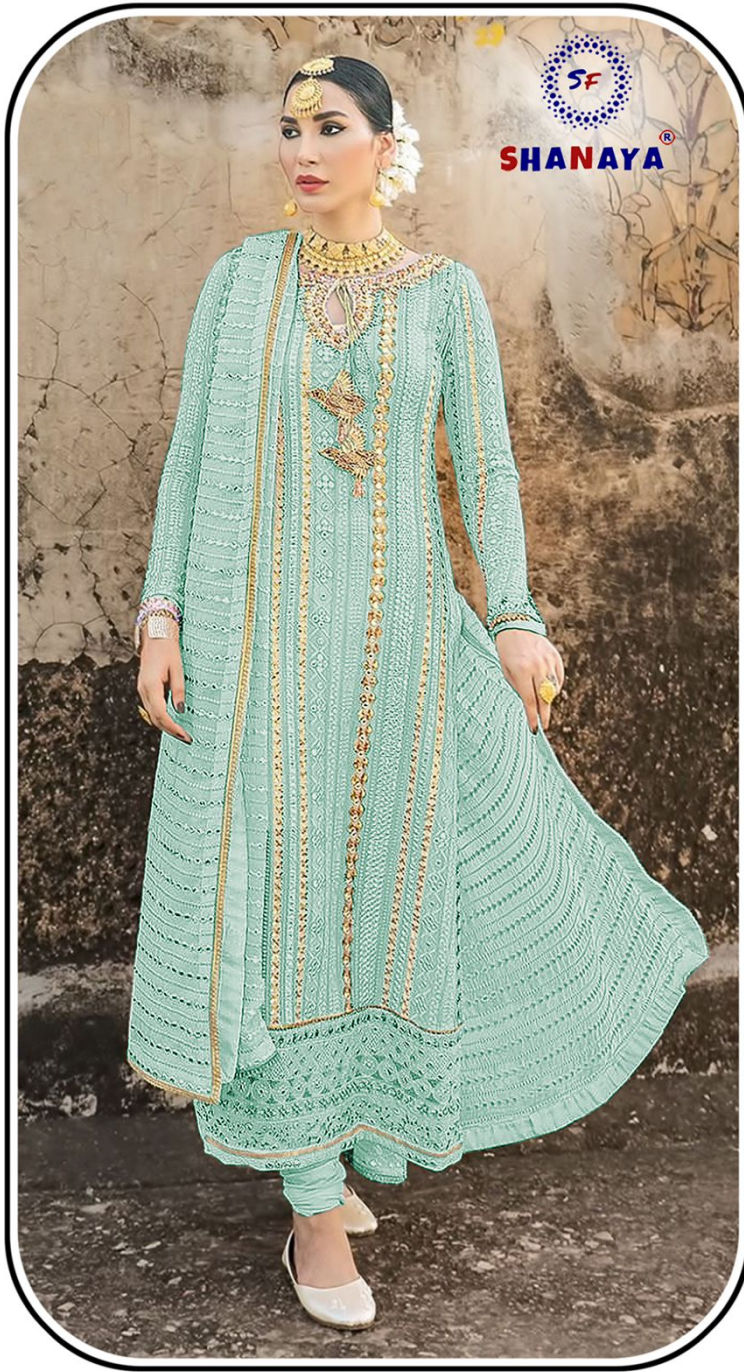




S-92 A *Rose*
AYNOOR

WASHING INSTRUCTIONS

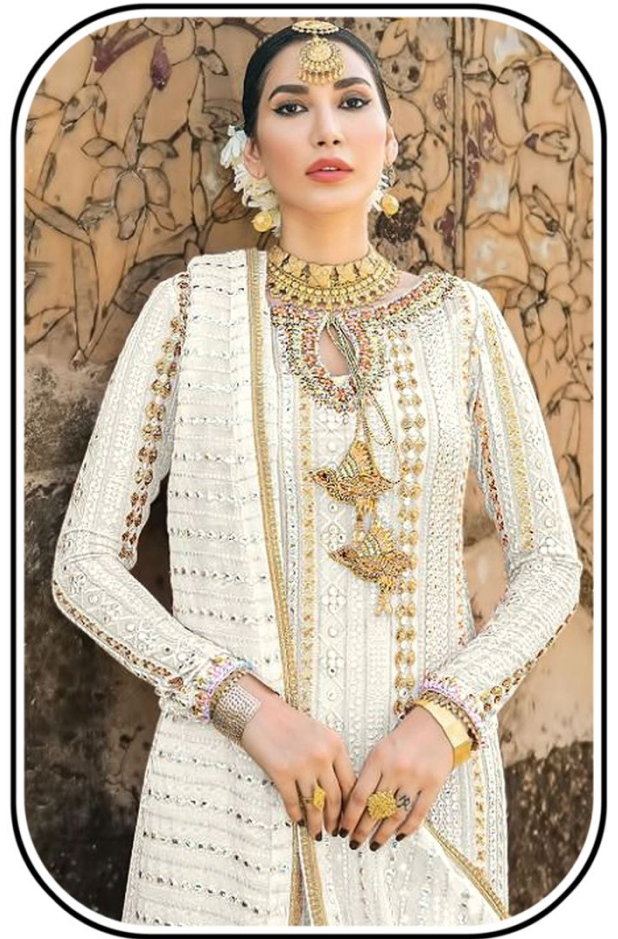
DO NOT USE ANY TYPE OF BLEACH OR STAIN REMOVING CHEMICALS BEFORE CUTTING / STITCHING . FABRIC SHOULD BE SOAKED IN WATER (ALL COMPONENTS SEPARATELY) FOR 15 MINUTES
DO NOT KEEP WET FABRIC IN TWISTED FROM IN ORDER TO AVOID COPY MARKS |
WASH COLOURED AND WHITE FABRICS SEPARATELY
IRON CLOTHES AT MODERATE TEMPERATURE | DO NOT DRY FABRIC IN DIRECT SUNLIGHT (EXTRA LACES, HANGINGS AND ACCESSORIES ARE NOT INLUDED)



S-92 B *Rose*
AYNOOR

WASHING INSTRUCTIONS

DO NOT USE ANY TYPE OF BLEACH OR STAIN REMOVING CHEMICALS
BEFORE CUTTING / STITCHING , FABRIC SHOULD BE SOAKED IN WATER
(ALL COMPONENTS SEPARATELY) FOR 15 MINUTES
DO NOT KEEP WET FABRIC IN TWISTED FROM IN ORDER TO AVOID COPY MARKS |
WASH COLOURED AND WHITE FABRICS SEPARATELY
IRON CLOTHES AT MODERATE TEMPERATURE | DO NOT DRY FABRIC IN DIRECT SUNLIGHT
(EXTRA LACES, HANGINGS AND ACCESSORIES ARE NOT INLUDED)



S-92 C *Rose*
AYNOOR

WASHING INSTRUCTIONS

DO NOT USE ANY TYPE OF BLEACH OR STAIN REMOVING CHEMICALS BEFORE CUTTING / STITCHING . FABRIC SHOULD BE SOAKED IN WATER (ALL COMPONENTS SEPARATELY) FOR 15 MINUTES

DO NOT KEEP WET FABRIC IN TWISTED FROM IN ORDER TO AVOID COPY MARKS | WASH COLOURED AND WHITE FABRICS SEPARATELY

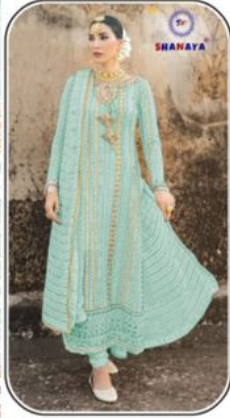
IRON CLOTHES AT MODERATE TEMPERATURE | DO NOT DRY FABRIC IN DIRECT SUNLIGHT (EXTRA LACES, HANGINGS AND ACCESSORIES ARE NOT INDUDED)



WASH CARE
Wash in cold water with like colors.
Do not use chlorine bleach or other
bleaching agents.
Do not use fabric softener.
Do not use iron, steam, or dry clean.
Do not use dry clean.
Do not use dry clean.
Do not use dry clean.

SHANAYA
Exclusive Pakistani Craft Market

Rose



S-92 B *Rose*
AYOOR

WASHING INSTRUCTIONS
Do not use hot iron or steam on this garment.
Do not use chlorine bleach or other
bleaching agents.
Do not use fabric softener.
Do not use iron, steam, or dry clean.
Do not use dry clean.



SHANAYA
Exclusive Fashion Design Material
Style



S-92 A *Rose*
ATWOOR

WEARING INSTRUCTIONS
Wash in cold water with mild detergent.
Do not use chlorine bleach or iron.
Dry flat in shade. Do not tumble dry.
Press on low heat. Do not steam.
For more information, visit our website at www.shanaya.com



WASH CARE

- DO NOT IRON, BLEACH OR WASH
- WASH SEPARATELY OR WITH SIMILAR COLORS
- DO NOT DRY OUT FROM SUNLIGHT
- WASH ON THE REVERSE SIDE
- DO NOT PUN FIBRE AND DISORDERED

Be Responsible For Color, Cloth, Zari Etc

SHANAYA

Exclusive Pakistani Dress Material

Rose

S-92 C *Rose* AYWOOR

WEAVING INSTRUCTIONS

DO NOT USE ANY TYPE OF BLEACH OR CHLORINE CONTAINING
 DYEING, STAINING, REMOVING OR REMEDY IN WATER
 ALL DIMENSIONS APPROXIMATE - FOR 15 INCHES
 DO NOT USE ANY TYPE OF IRONING OR PRESS TO MAKE DRY BARK
 WASH DARKS AND WHITE SEPARATELY
 DO NOT USE ANY TYPE OF DRY CLEANING OR HOT DRY FABRIC IN DRY CLEANING
 1 EXTRA LACE, HANGING AND ACCESSORIES ARE NOT INCLUDED