

A woman with long dark hair is seated on a wooden bench, looking towards the right. She is wearing a white, long-sleeved dress with intricate floral embroidery in pink and gold. The dress features large pink flowers and green leaves on the bodice and sleeves. She is also wearing large, ornate earrings, a bracelet, and a ring. In her left hand, she holds a black and white striped clutch bag. The background consists of horizontal wooden slats.

Firdous

EXCLUSIVE COLLECTION

Vol-16

A woman with long dark hair is sitting on a wooden bench, looking to her right. She is wearing a white long-sleeved dress with intricate floral embroidery in pink and gold. She is also wearing large gold earrings, a necklace, and a bracelet. She is holding a black and white striped clutch bag. The background is a wooden wall.

Firdous

EXCLUSIVE COLLECTION

Vol-16



Firdous
EXCLUSIVE COLLECTION
Vol-16



2029

Firdous
EXCLUSIVE COLLECTION
Vol-16



Shree
FABRI
Firdous
EXCLUSIVE COLLECTION
Vol-16

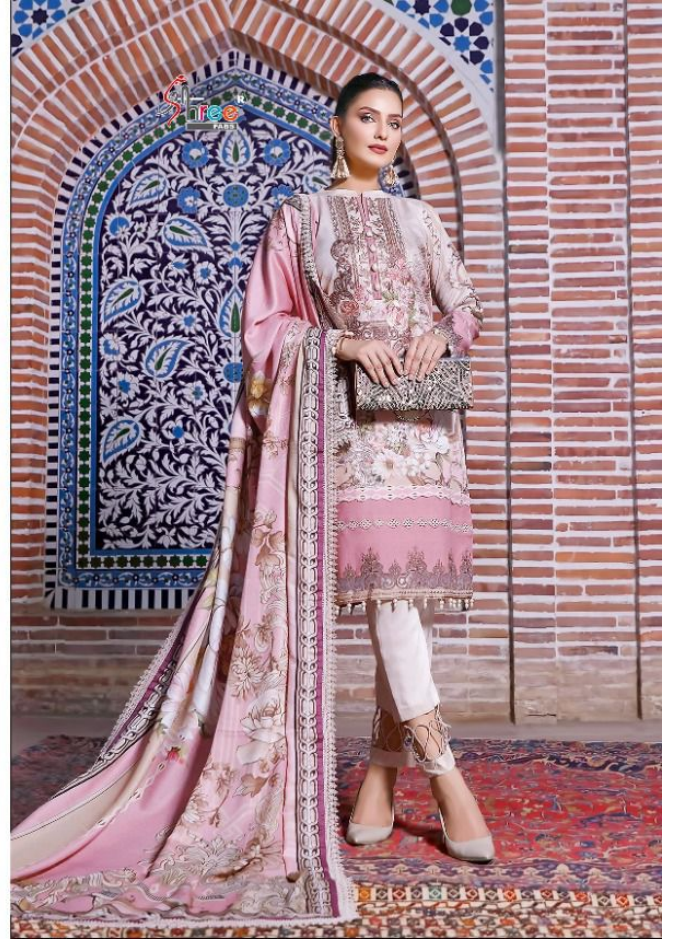




Firdous
EXCLUSIVE COLLECTION
Vol-16

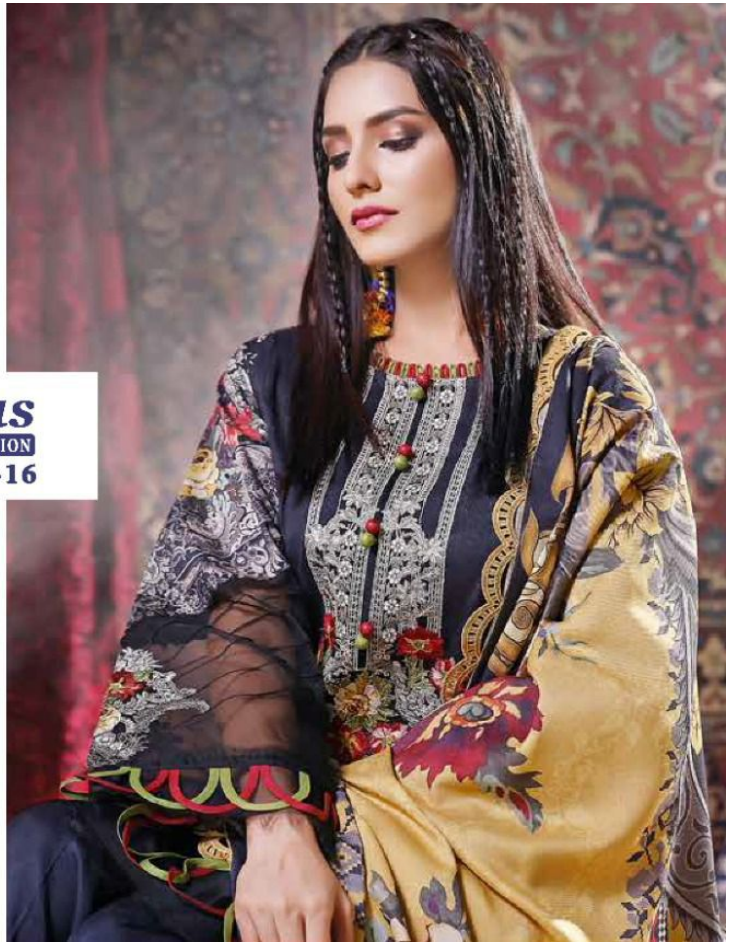


2030





Firdous
EXCLUSIVE COLLECTION
Vol-16

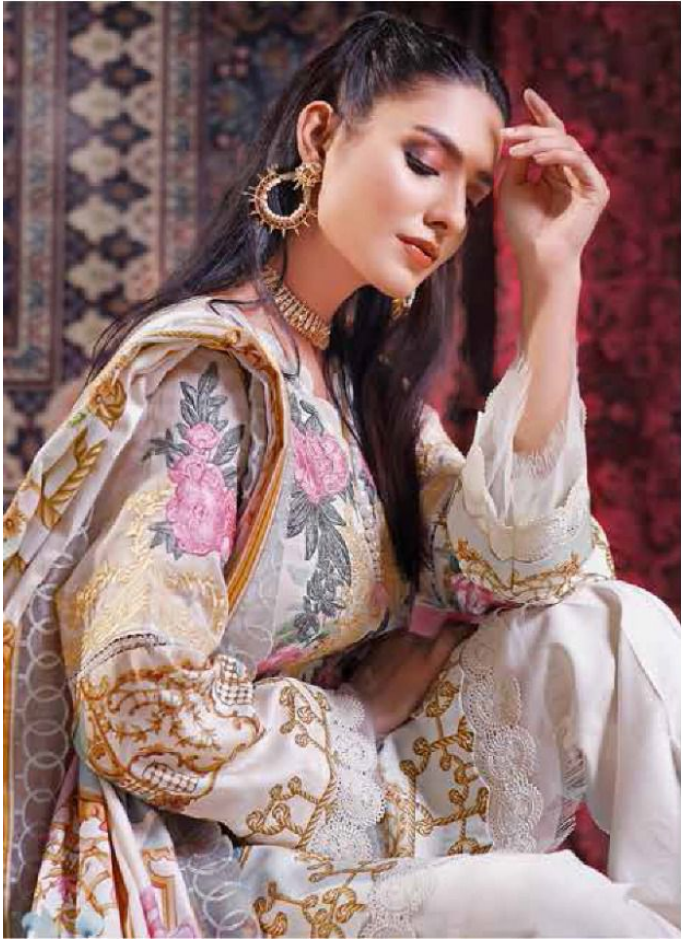




2031

Firdous
EXCLUSIVE COLLECTION
Vol-16





Shree®
FABRI



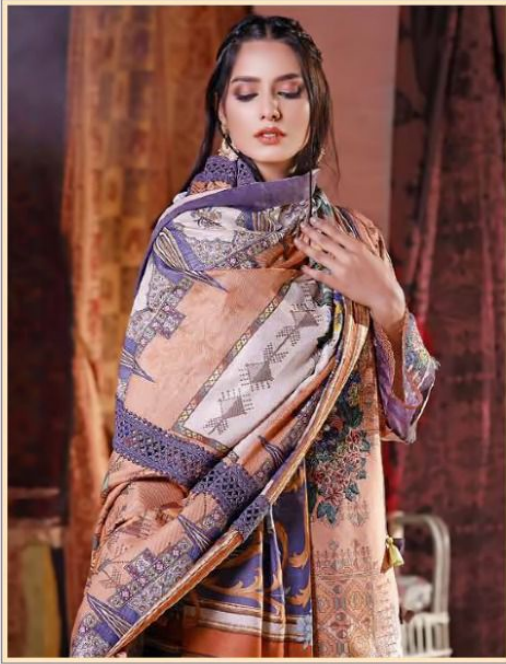
Firdous
EXCLUSIVE COLLECTION
Vol-16



2032

Firdous
EXCLUSIVE COLLECTION
Vol-16

Shree®
SILK



Firdous
EXCLUSIVE COLLECTION
Vol-16





2033

Firdous
EXCLUSIVE COLLECTION
Vol-16





Shree
FABR

Firdous
EXCLUSIVE COLLECTION
Vol-16



2034

Firdous
EXCLUSIVE COLLECTION
Vol-16



Firdous
EXCLUSIVE COLLECTION
Vol-16



2029



2030



2031



2032



2033



2034