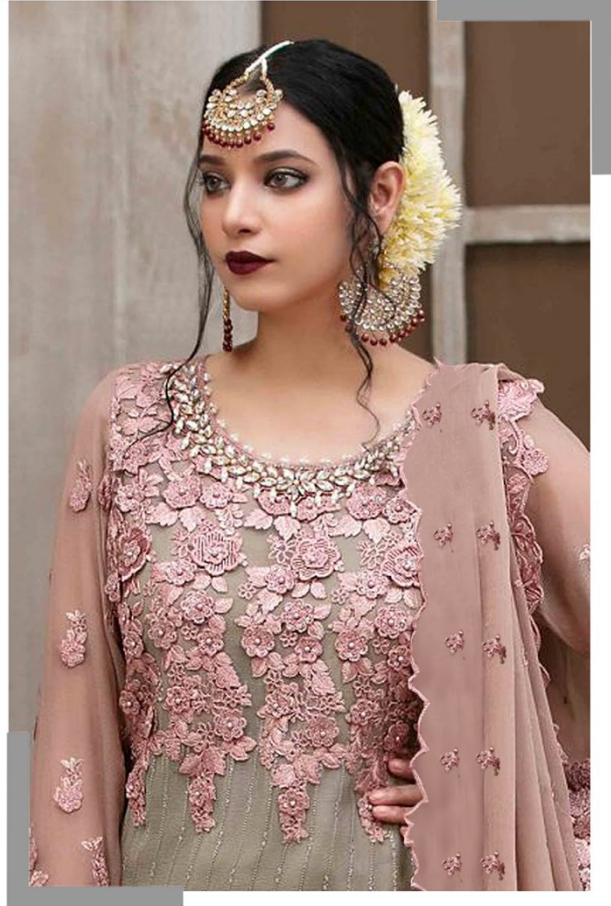




SHANAYA[®]



Rose BRIDAL

S-98



WASHING INSTRUCTIONS

DO NOT USE ANY TYPE OF BLEACH OR STAIN REMOVING CHEMICALS
BEFORE CUTTING / STITCHING , FABRIC SHOULD BE SOAKED BE SOAKED IN WATER
(ALL COMPONENTS SEPARATELY) FOR 15 MINUTES
DO NOT KEEP WET FABRIC IN TWISTED FROM IN ORDER TO AVOID COPY MARKS |
WASH COLOURED AND WHITE FABRICS SEPARATELY
IRON CLOTHES AT MODERATE TEMPERATURE | DO NOT DRY FABRIC IN DIRECT SUNLIGHT
(EXTRA LACES, HANGINGS AND ACCESSORIES ARE NOT INDUDED)



NACK

SLEEVE

**DUPPTA
DAMAN
LACE**

**DUPPTA
DAMAN
BELT**

**DUPPTA
NAZMEEN
WORK**



SHANAYA

Rose
BRIDAL

S-98

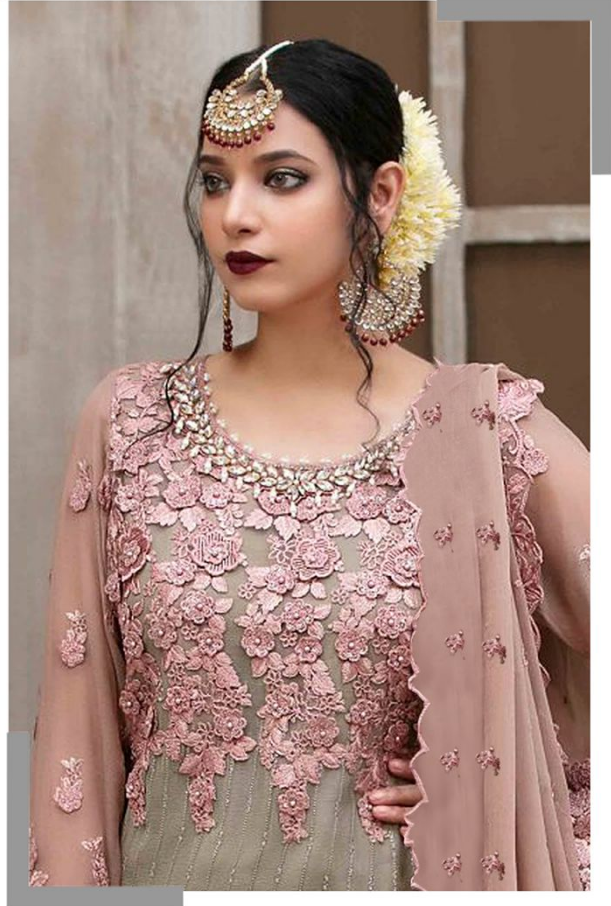
WASHING INSTRUCTIONS

DO NOT USE ANY TYPE OF BLEACH OR OTHER CHEMICALS
BEFORE CUTTING, CUTTING, FINISHING SHOULD BE DONE IN SHADE OR WATER
DO NOT WASH WITH HOT WATER, WASHING SHOULD BE DONE IN SHADE
DO NOT DRY WITH HOT SUN, HANGING SHOULD BE DONE IN SHADE
DO NOT USE IRON, PRESSING SHOULD BE DONE IN SHADE
EXTRA LACE, FLOWERS AND ACCESSORIES ARE NOT INCLUDED

FRANT TOP



SHANAYA[®]



Rose BRIDAL

S-98



WASHING INSTRUCTIONS

DO NOT USE ANY TYPE OF BLEACH OR STAIN REMOVING CHEMICALS
BEFORE CUTTING / STITCHING , FABRIC SHOULD BE SOAKED BE SOAKED IN WATER
(ALL COMPONENTS SEPARATELY) FOR 15 MINUTES
DO NOT KEEP WET FABRIC IN TWISTED FROM IN ORDER TO AVOID COPY MARKS |
WASH COLOURED AND WHITE FABRICS SEPARATELY
IRON CLOTHES AT MODERATE TEMPERATURE | DO NOT DRY FABRIC IN DIRECT SUNLIGHT
(EXTRA LACES, HANGINGS AND ACCESSORIES ARE NOT INDUDED)





