







*We're HANDPICKED the key pieces that you must get your hands on before they FLY OFF the racks.*



**CODE | 3248**



CODE | 3242

*A Mind of colors that HIGHLIGHT every corner of the  
ATTRACTIVE DESIGNS that in turn adorn you with VAST BEAUTY*





PANKHUDI

*The collection was a perfect blend of INDIAN SILHOUETTES & CONTEMPORARY STYLE.*



CODE | 3243

*The flame of subtle ETHNIC WEAR that meets the CONTEMPORARY GLAM  
skillfully captures with minute details of ELEGANCE*

---



CODE | 3241

*Classic styles with LUXURIOUS soft fabrics are highlighted by  
REFINED and FEMINE details*



CODE | 3241



CODE | 3242



CODE | 3245



CODE | 3246



CODE | 3243



CODE | 3244



CODE | 3247



CODE | 3248





CODE | 3244

*The contemporary design for the FASHION conscious women  
while preserving the traditional ART and CULTURE of India*



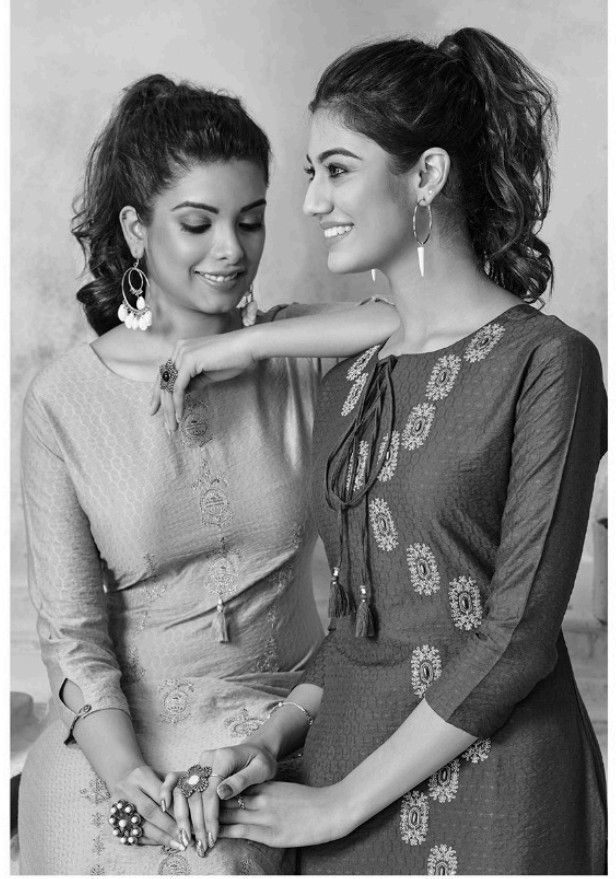
CODE | 3247

*The GLAMOUR is something which will fulfill all  
the requirement for GLOSSY & TRENDY LOOK*





CODE | 3244-3245



*The sparkling BEAUTY of textiles will work their MAGIC on everything in your wardrobe.*



CODE | 3246

*Fashionable tributes to COLOR & SILHOUETTES that have  
inspired TRENDS around the world.*

CODE | 3245

The key is to combine two ELEMENTS as you don't  
end up over doing the FEMINE QUOTIENT

