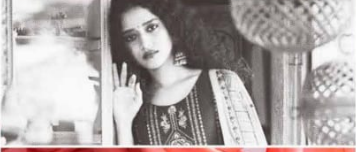


A woman with long, dark, wavy hair is looking thoughtfully at a display of jewelry. She is wearing a vibrant green sari with intricate floral embroidery on the border and a matching green blouse with floral patterns. She has a bindi on her forehead and is wearing large, ornate earrings and a matching bracelet. The jewelry display is a circular wooden frame containing various pieces of jewelry, including earrings and necklaces. The background is a blurred indoor setting with colorful tassels hanging from the ceiling.

*Kalaroop*

*Zarkan by Patiyala*

ELEGANT INDULGENCE



Other designs of this series available in different colors and patterns. For more information, visit our website.

• 13034 •





• 13036 •  
Brilliant hues & lustrous textures give you a new makeover this season

## HEARTWARMING SHADES



**FASHION QUEEN**



Brilliant hues & lustrous textures give you a new makeover this season





**CELEBRATE MOMENTS**

Simple without losing so of elegance & tradition with natural fabrics  
• 13037 •





**UNDERSTATED GLAM**

*The season look up with some truly inspiring & elegantly*

• 13038 •





13033

13034

13035



13036

13037

13038



A woman with long, dark, wavy hair is looking thoughtfully at a display of jewelry. She is wearing a vibrant green sari with intricate floral embroidery on the border and a matching green blouse with floral patterns. She is adorned with large, ornate earrings, a ring, and a wide, decorative bangle. The jewelry display in front of her features various styles of earrings, including gold and silver pieces. The background is a blurred indoor setting with colorful tassels hanging from the ceiling.

*Kalaroop*

*Zarkan by Patiyala*



*Preference*  
**DELIGHTFUL**



*What is remarkable about season's offering is the interpretation of natural base with fashion and Activity Details.*



TIMELESS CHARISM



Simple without letting go of elegance & tradition with natural fabrics  
• 13033 •