

Epic®



SANA SAFINAZ
LUXURY LIGHT



D.NO.43015



D.NO.43016



D.NO.43017



D.NO.43018



D.NO.43019



D.NO.43020



D.NO.43021

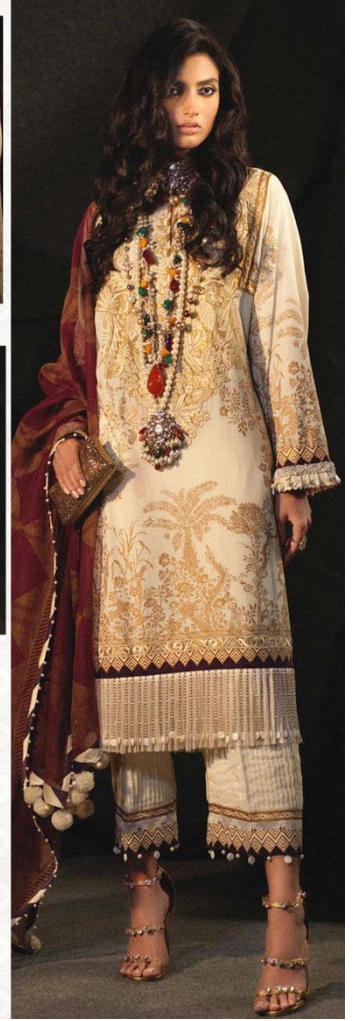


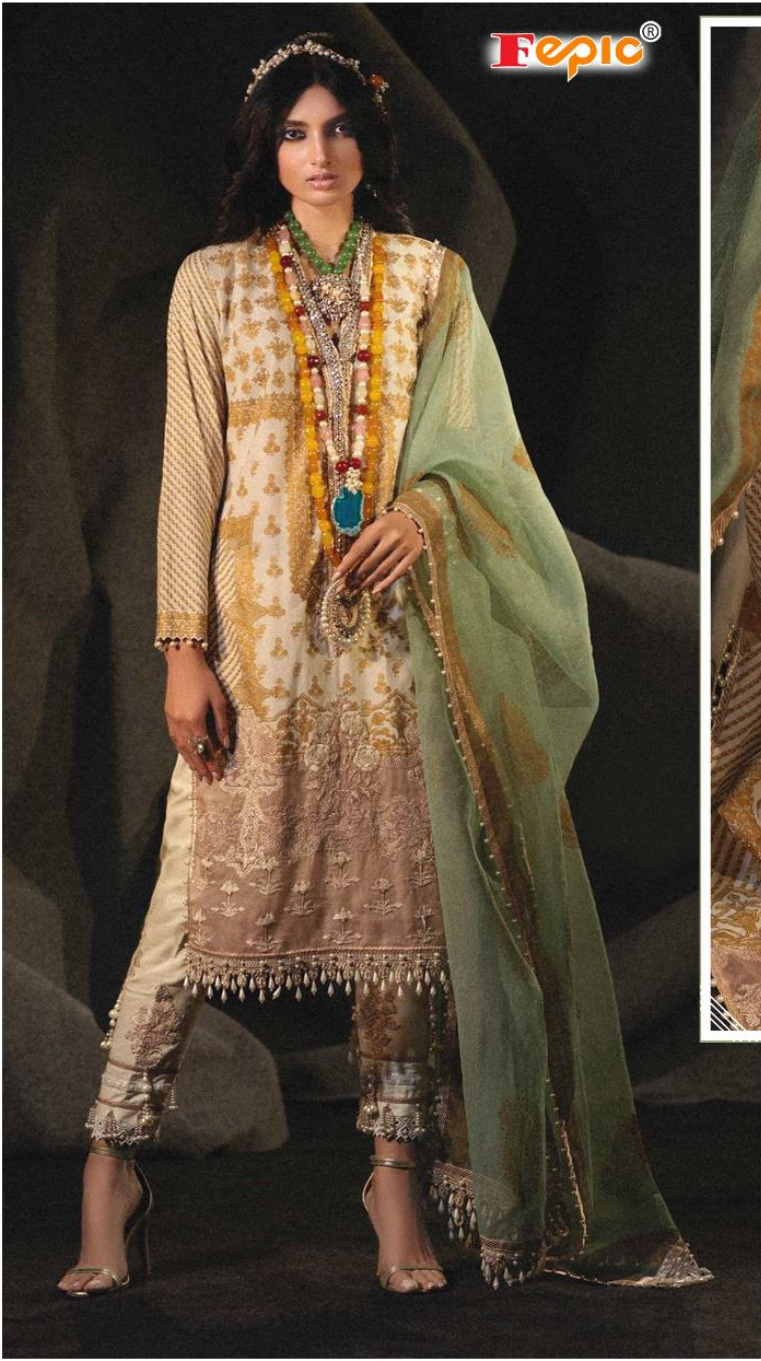
D.NO.43022

Fepic[®]
SANA SAFINAZ
LUXURY LIGHT

:_Fepic

:Fb.com/Fepic11





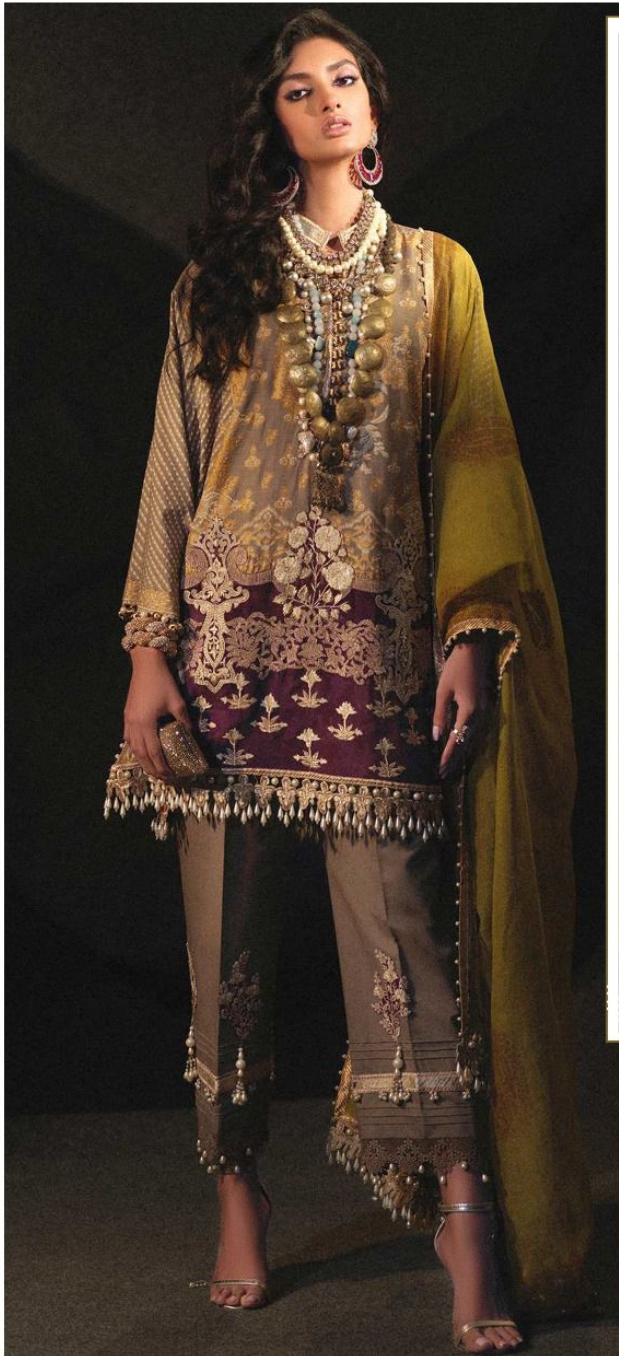
WASHING INTRUCTIONS

DO NOT USE ANY TYPE OF BLEACH OR STAIN REMOVING CHEMICALS
BEFORE CUTTING / STITCHING, FABRIC SHOULD BE SOAKED BE SOAKED IN WATER
(ALL COMPONENTS SEPARATELY) FOR 15 MINUTES
DO NOT KEEP WET FABRIC IN TWISTED FROM IN ORDER TO AVOID COPY MARKS |
WASH COLOURED AND WHITE FABRICS SEPARATELY
IRON CLOTHES AT MODERATE TEMPERATURE | DO NOT DRY FABRIC IN DIRECT SUNLIGHT
(EXTRA LACES, HANGINGS AND ACCESSORIES ARE NOT INDUDED)

D.NO.43015

SANA SAFINAZ
LUXURY LIGHT





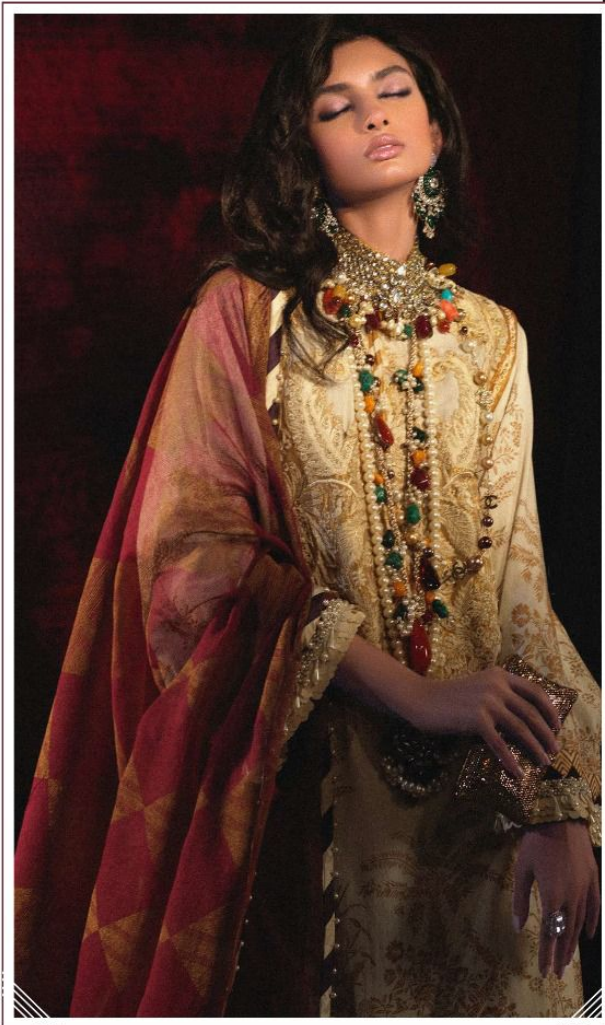
WASHING INTRUCTIONS

DO NOT USE ANY TYPE OF BLEACH OR STAIN REMOVING CHEMICALS
BEFORE CUTTING / STITCHING, FABRIC SHOULD BE SOAKED BE SOAKED IN WATER
(ALL COMPONENTS SEPARATELY) FOR 15 MINUTES
DO NOT KEEP WET FABRIC IN TWISTED FROM IN ORDER TO AVOID COPY MARKS |
WASH COLOURED AND WHITE FABRICS SEPARATELY
IRON CLOTHES AT MODERATE TEMPERATURE | DO NOT DRY FABRIC IN DIRECT SUNLIGHT
(EXTRA LACES, HANGINGS AND ACCESSORIES ARE NOT INDUDED)

D.NO.43016

SANA SAFINAZ
LUXURY LIGHT





WASHING INTRUCTIONS

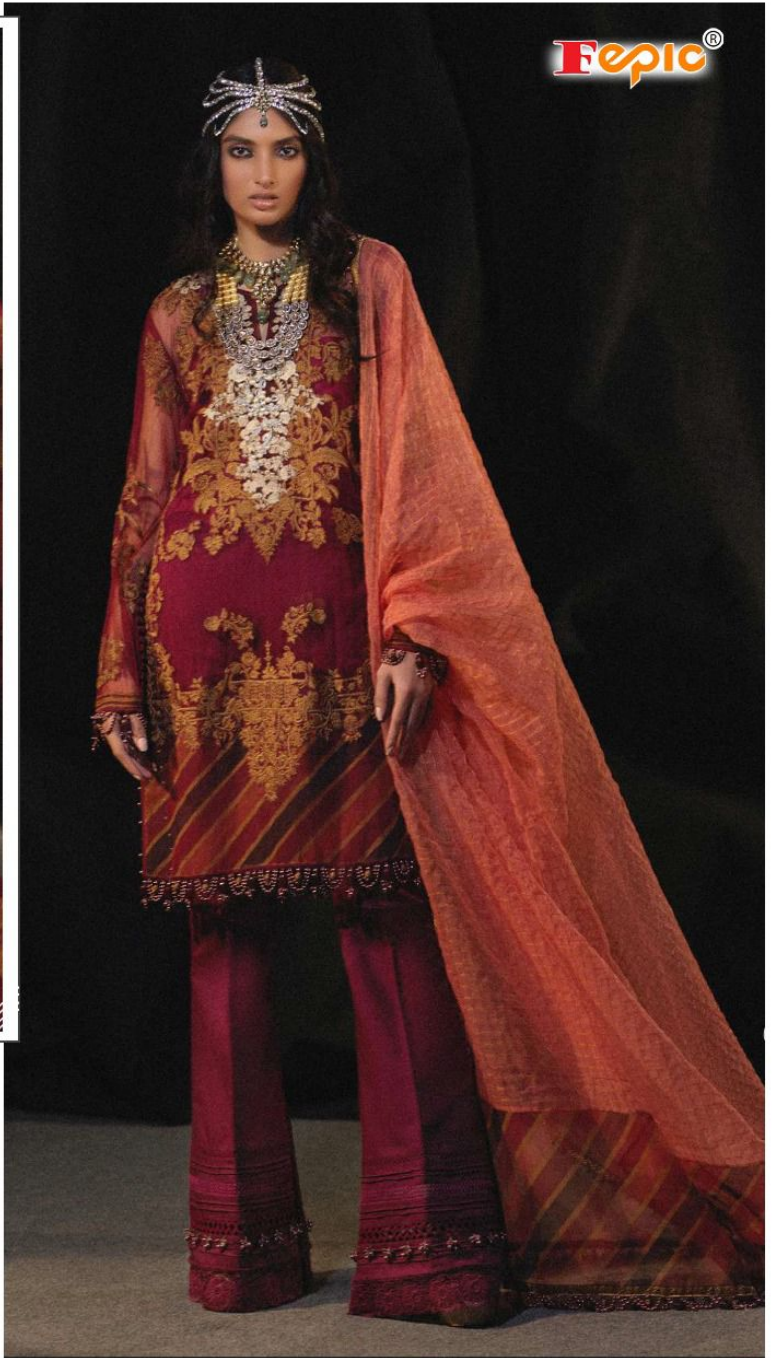
DO NOT USE ANY TYPE OF BLEACH OR STAIN REMOVING CHEMICALS
 BEFORE CUTTING / STITCHING, FABRIC SHOULD BE SOAKED BE SOAKED IN WATER
 (ALL COMPONENTS SEPARATELY) FOR 15 MINUTES
 DO NOT KEEP WET FABRIC IN TWISTED FROM IN ORDER TO AVOID COPY MARKS |
 WASH COLOURED AND WHITE FABRICS SEPARATELY
 IRON CLOTHES AT MODERATE TEMPERATURE | DO NOT DRY FABRIC IN DIRECT SUNLIGHT
 (EXTRA LACES, HANGINGS AND ACCESSORIES ARE NOT INDUDED)

D.NO.43017

SANA SAFINAZ
LUXURY LIGHT



FePIC®



WASHING INTRUCTIONS

DO NOT USE ANY TYPE OF BLEACH OR STAIN REMOVING CHEMICALS
BEFORE CUTTING / STITCHING, FABRIC SHOULD BE SOAKED BE SOAKED IN WATER
(ALL COMPONENTS SEPARATELY) FOR 15 MINUTES
DO NOT KEEP WET FABRIC IN TWISTED FROM IN ORDER TO AVOID COPY MARKS |
WASH COLOURED AND WHITE FABRICS SEPARATELY
IRON CLOTHES AT MODERATE TEMPERATURE | DO NOT DRY FABRIC IN DIRECT SUNLIGHT
(EXTRA LACES, HANGINGS AND ACCESSORIES ARE NOT INDUDED)

D.NO.43022

SANA SAFINAZ
LUXURY LIGHT





Fepic®

SANA SAFINAZ
LUXURY LIGHT

Instagram: @Fepic Facebook: Fb.com/Fepic11

D.NO.43022

Epic®



SANA SAFINAZ
LUXURY LIGHT



Fepic®

SANA SAFINAZ

LUXURY LIGHT



Fepic®

SANA SAFINAZ

LUXURY LIGHT

Instagram: @Fepic Facebook: Fb.com/Fepic11

D.NO.43018



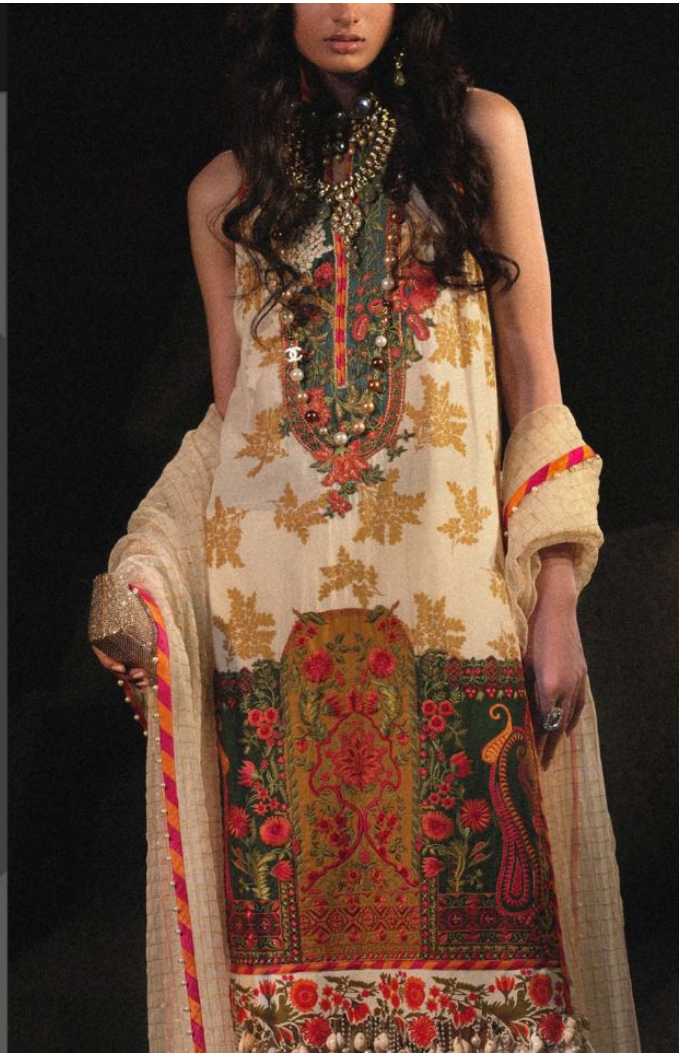
Fepic[®]

SANA SAFINAZ

LUXURY LIGHT

 [_Fepic](#)  [:Fb.com/Fepic11](#)

D.NO.43021





Fepic®

SANA SAFINAZ

LUXURY LIGHT

 _Fepic  :Fb.com/Fepic11

D.NO.43019

D.NO	TOP	BOTTOM	DUPATTA	RATE
43015	PURE COTTON PRINTED WITH EMBROIDERED PATCHES	CHIFFON PRINTED WITH LACE	SEMILAWN WITH EMBROIDERED PATCHES	941
43016	PURE COTTON PRINTED WITH EMBROIDERED PATCHES	CHIFFON PRINTED WITH LACE	SEMILAWN WITH EMBROIDERED PATCHES	941
43017	PURE COTTON PRINTED WITH EMBROIDERED PATCHES	CHIFFON PRINTED WITH LACE	SEMILAWN DYED	881
43018	PURE COTTON PRINTED WITH EMBROIDERED PATCHES	CHIFFON PRINTED WITH LACE	SEMILAWN DYED	881
43019	HEAVY NET EMBROIDERED WITH BACK AND SLEEVE WORK INNER PURE COTTON PRINTED	ORGANZA CHAQUES WITH DIGITAL BUNCHES AND LACE	SEMILAWN DYED	1051
43020	PURE COTTON PRINTED WITH EMBROIDERED PATCHES	ORGANZA CHAQUES EITH LACE	SEMILAWN DYED	921
43021	PURE COTTON PRINTED WITH EMBROIDERED PATCHES	ORGANZA CHAQUES EITH LACE	SEMILAWN DYED	921
43022	PURE COTTON PRINTED WITH EMBROIDERED PATCHES	ORGANZA CHAQUES WITH DIGITAL BUNCHES AND LACE	SEMILAWN DYED	1051
AVG RATE-949				

Fepic[®]

SANA SAFINAZ
LUXURY LIGHT

 :_Fepic

 :Fb.com/Fepic11

Epic[®]



◆ D.NO.43015 ◆



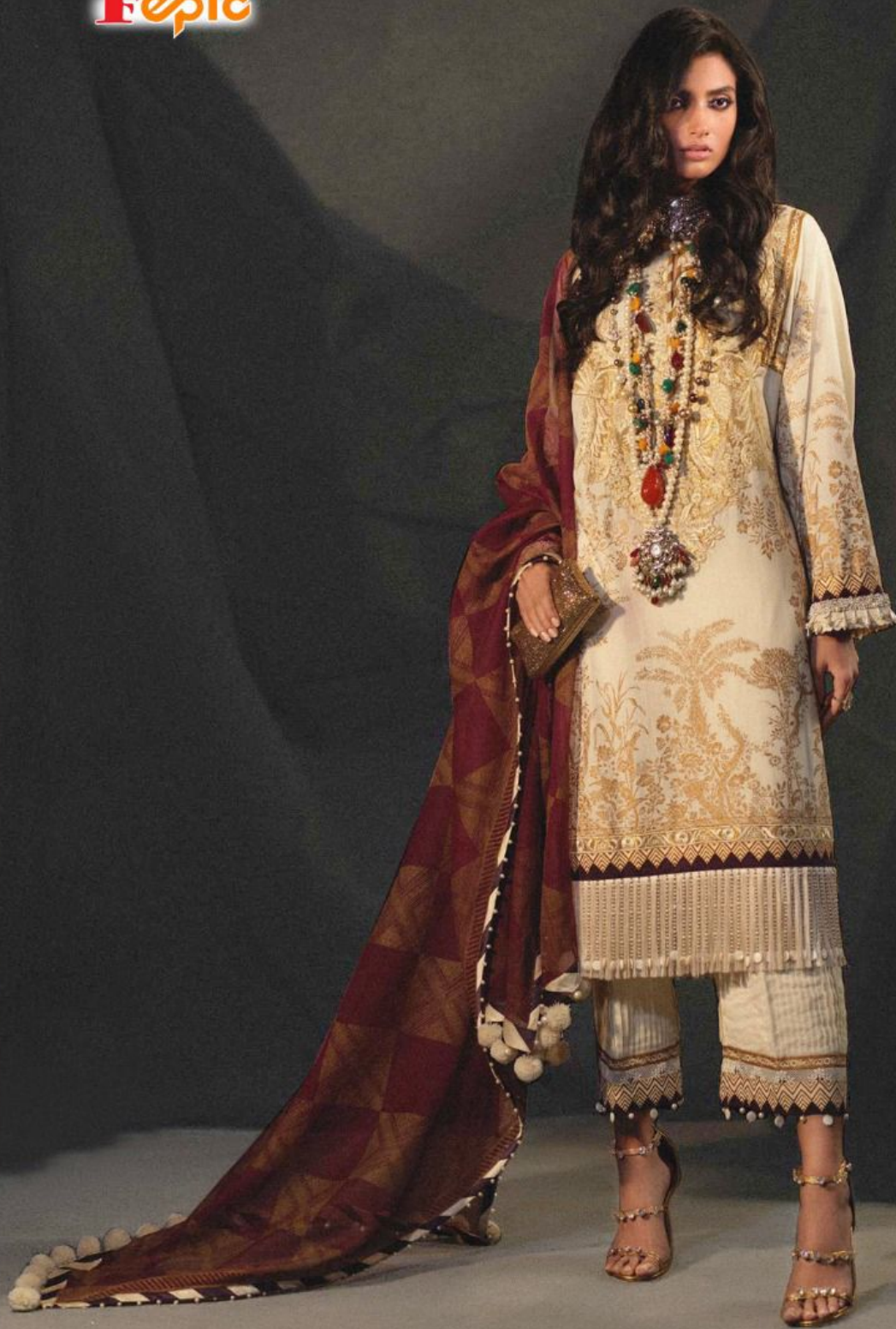
Fepic®



D.NO.43018



Fepic®



D.NO.43017

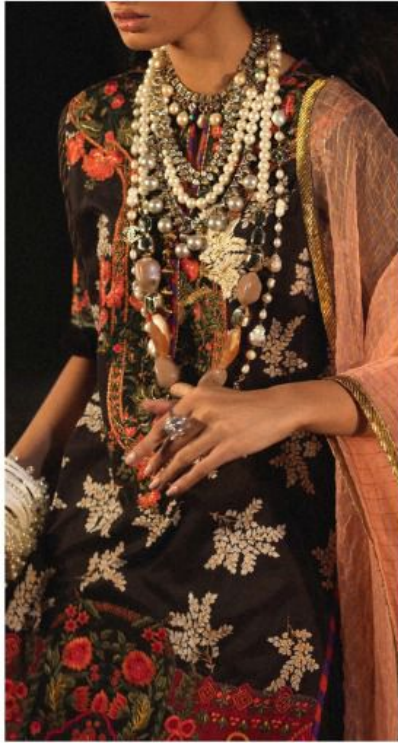
Fepic[®]



◆ D.NO.43019 ◆

IS ABOUT TO CHANGE

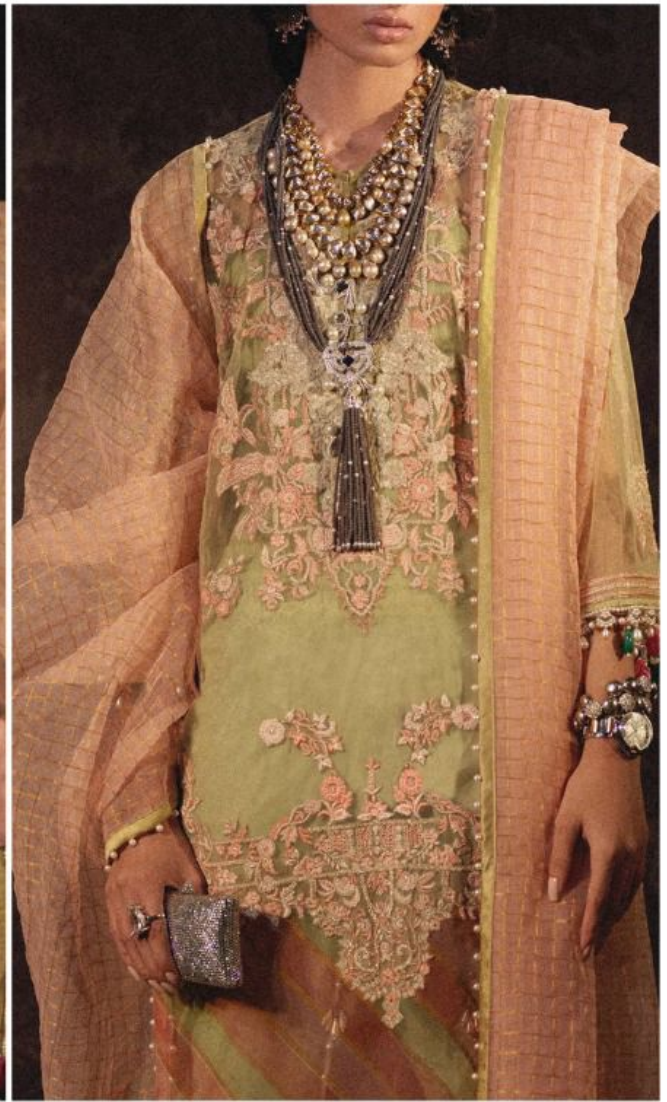




Fepic®



D.NO.43020



Fepic®



◆ D.NO.43022 ◆

Fepic®



D.NO.43021





Turn every head your way as you stroll across
in an outfit from the new ethnic collection celebrate
your classy side with this perfect for chic style



Epic[®]



SANA SAFINAZ
LUXURY LIGHT



*Seize all attention with this Sparkling vibrant color
attractive dress with natural flower*





Fepic®

SANA SAFINAZ

LUXURY LIGHT

: Fepic : Fb.com/Fepic11

D.NO.43020

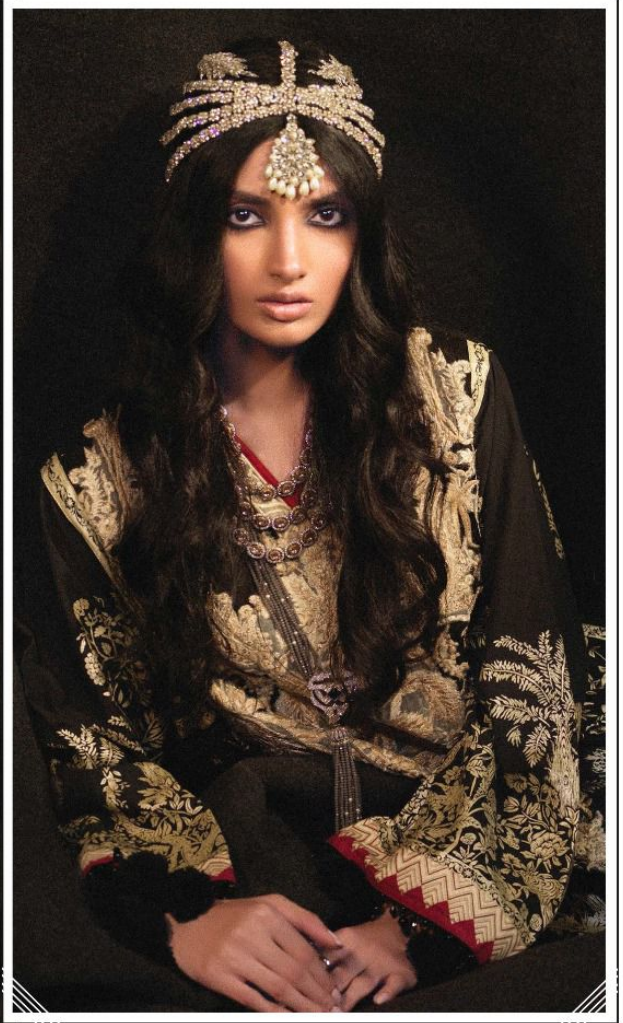


Fepic®
SANA SAFINAZ
LUXURY LIGHT

:Fepic :Fb.com/Fepic11

D.NO.43015

Epic®



WASHING INTRUCTIONS

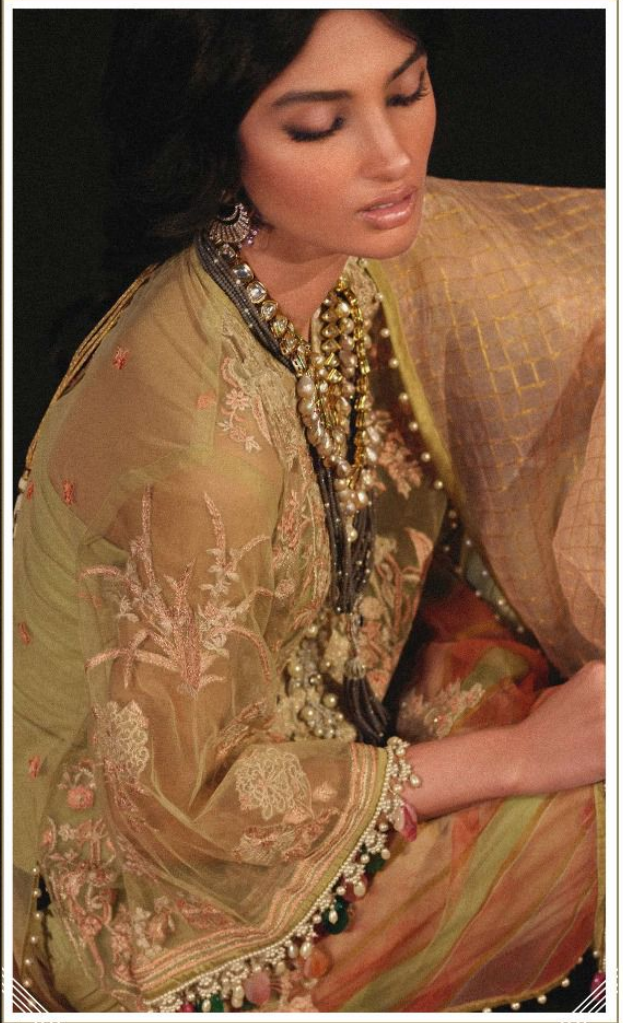
DO NOT USE ANY TYPE OF BLEACH OR STAIN REMOVING CHEMICALS
BEFORE CUTTING / STITCHING, FABRIC SHOULD BE SOAKED BE SOAKED IN WATER
(ALL COMPONENTS SEPARATELY) FOR 15 MINUTES
DO NOT KEEP WET FABRIC IN TWISTED FROM IN ORDER TO AVOID COPY MARKS |
WASH COLOURED AND WHITE FABRICS SEPARATELY
IRON CLOTHES AT MODERATE TEMPERATURE | DO NOT DRY FABRIC IN DIRECT SUNLIGHT
(EXTRA LACES, HANGINGS AND ACCESSORIES ARE NOT INDUDED)

D.NO.43018

SANA SAFINAZ
LUXURY LIGHT



Eepic®



WASHING INTRUCTIONS

DO NOT USE ANY TYPE OF BLEACH OR STAIN REMOVING CHEMICALS
BEFORE CUTTING / STITCHING, FABRIC SHOULD BE SOAKED BE SOAKED IN WATER
(ALL COMPONENTS SEPARATELY) FOR 15 MINUTES
DO NOT KEEP WET FABRIC IN TWISTED FROM IN ORDER TO AVOID COPY MARKS |
WASH COLOURED AND WHITE FABRICS SEPARATELY
IRON CLOTHES AT MODERATE TEMPERATURE | DO NOT DRY FABRIC IN DIRECT SUNLIGHT
(EXTRA LACES, HANGINGS AND ACCESSORIES ARE NOT INDUDED)

D.NO.43019

SANA SAFINAZ
LUXURY LIGHT



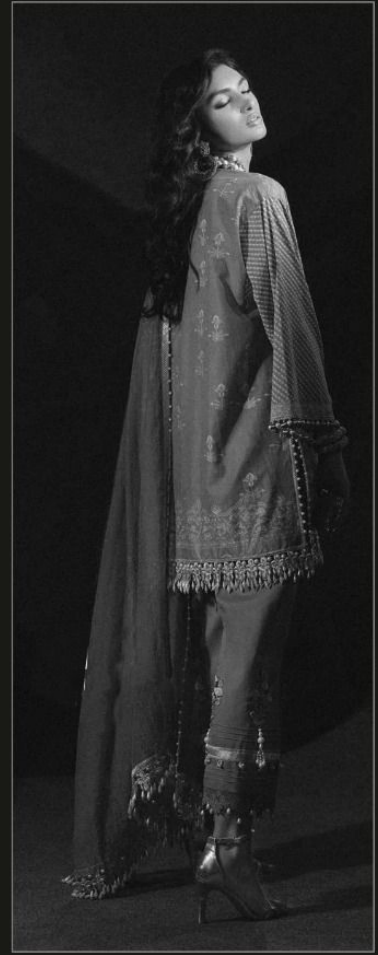
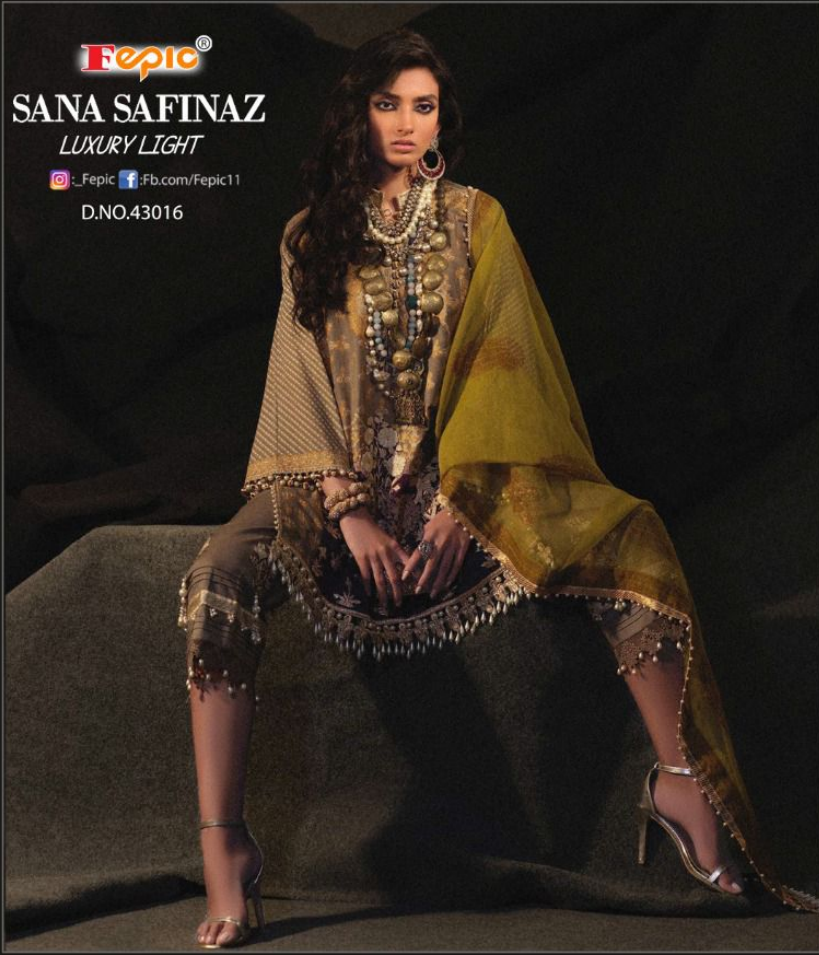
Fepic®

SANA SAFINAZ

LUXURY LIGHT

 _Fepic  Fb.com/Fepic11

D.NO.43016



Fepic®

SANA SAFINAZ
LUXURY LIGHT

: _Fepic : Fb.com/Fepic11

D.NO.43017





WASHING INTRUCTIONS

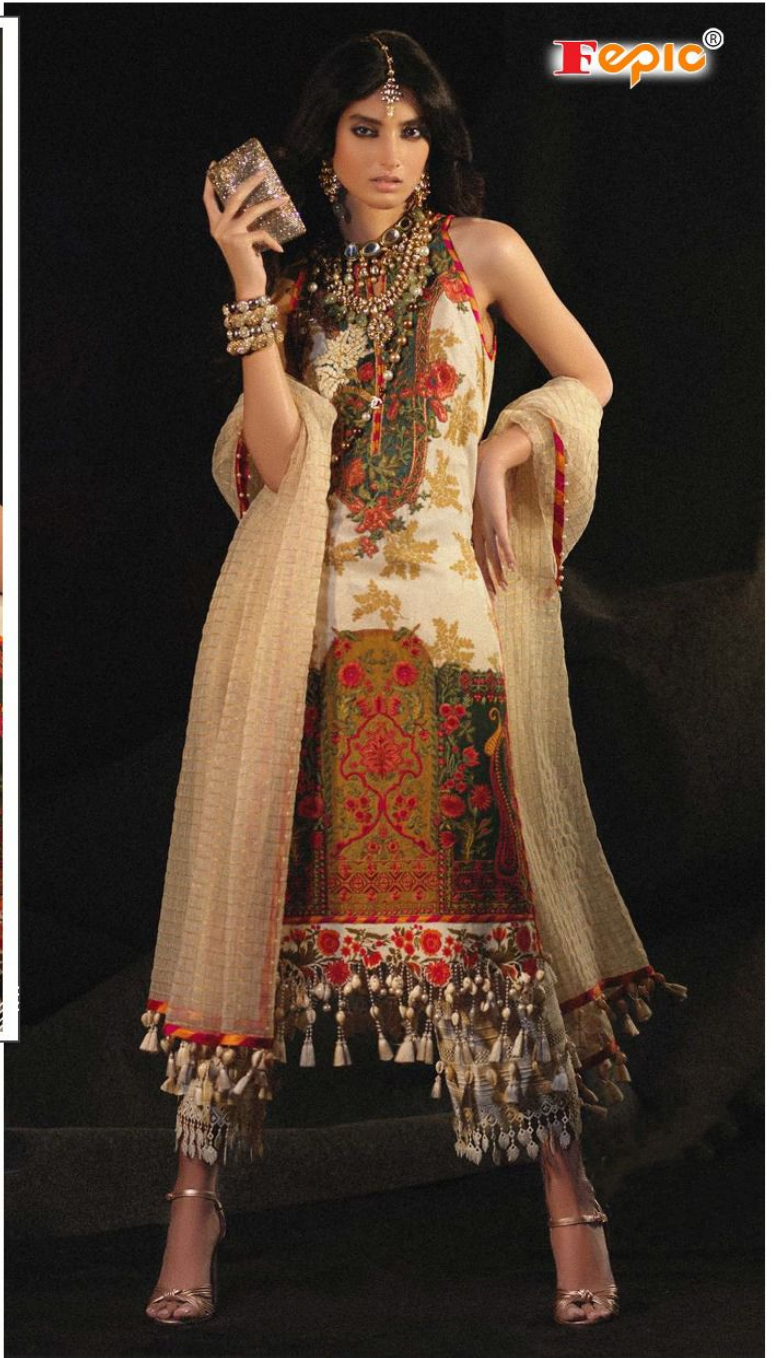
DO NOT USE ANY TYPE OF BLEACH OR STAIN REMOVING CHEMICALS
BEFORE CUTTING / STITCHING, FABRIC SHOULD BE SOAKED BE SOAKED IN WATER
(ALL COMPONENTS SEPARATELY) FOR 15 MINUTES
DO NOT KEEP WET FABRIC IN TWISTED FROM IN ORDER TO AVOID COPY MARKS |
WASH COLOURED AND WHITE FABRICS SEPARATELY
IRON CLOTHES AT MODERATE TEMPERATURE | DO NOT DRY FABRIC IN DIRECT SUNLIGHT
(EXTRA LACES, HANGINGS AND ACCESSORIES ARE NOT INDUDED)

D.NO.43020

SANA SAFINAZ
LUXURY LIGHT



FePIC®



WASHING INTRUCTIONS

DO NOT USE ANY TYPE OF BLEACH OR STAIN REMOVING CHEMICALS
BEFORE CUTTING / STITCHING, FABRIC SHOULD BE SOAKED BE SOAKED IN WATER
(ALL COMPONENTS SEPARATELY) FOR 15 MINUTES
DO NOT KEEP WET FABRIC IN TWISTED FROM IN ORDER TO AVOID COPY MARKS |
WASH COLOURED AND WHITE FABRICS SEPARATELY
IRON CLOTHES AT MODERATE TEMPERATURE | DO NOT DRY FABRIC IN DIRECT SUNLIGHT
(EXTRA LACES, HANGINGS AND ACCESSORIES ARE NOT INDUDED)

D.NO.43021

SANA SAFINAZ
LUXURY LIGHT

