





elegance

Beauty is in the eye of the beholder

The Glamour by MOHINI is a spectacular festive collection of gorgeous, unique and trendy dresses for women all around the nation.

A close-up photograph of the same woman sitting in the same shimmering, multi-colored saree. She is leaning her head on her hand, looking towards the camera with a smile. The background is the same white architectural setting. The image is framed with a light blue border.

THE OUTFITS WORK FOR ALL OCCASION. THEY HAVE TO MAKE YOU FEEL SPECIAL.



DEFINE YOUR STYLE

THE OUTFITS WORK FOR ALL OCCASION. THEY HAVE TO MAKE YOU FEEL SPECIAL.



FASHION WEARE

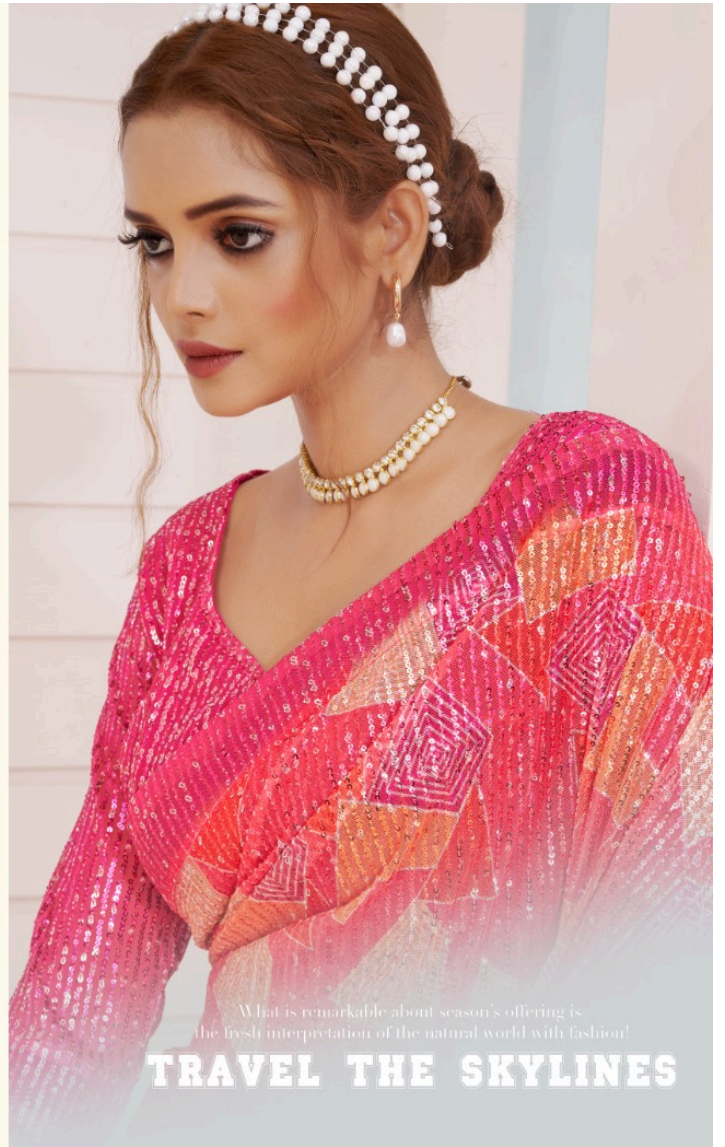




Embrace
ELEGANCE
— Style gives the first impression of your personality, so enhance it with SURANGANI —









APOETRY

DRAPING YOU LIKE RECITING A POETRY

















