



KALARANG
NAGMA





Embrace one of the purest trends this season



KALARANG



No.3514



No.3511



No.3512



No.3513



No.3514



KALARANG

- **TOP** - JAM SILK COTTON PULKARI EMBROIDERY WORK
- **BOTTOM** - RAYON
- **DUPATTA** - CHINON WITH HEAVY WORK
- **DESIGNS** - 04

Catalogue :- NAGMA



KALARANG

*Sometimes you don't have to try
too hard to look different.*

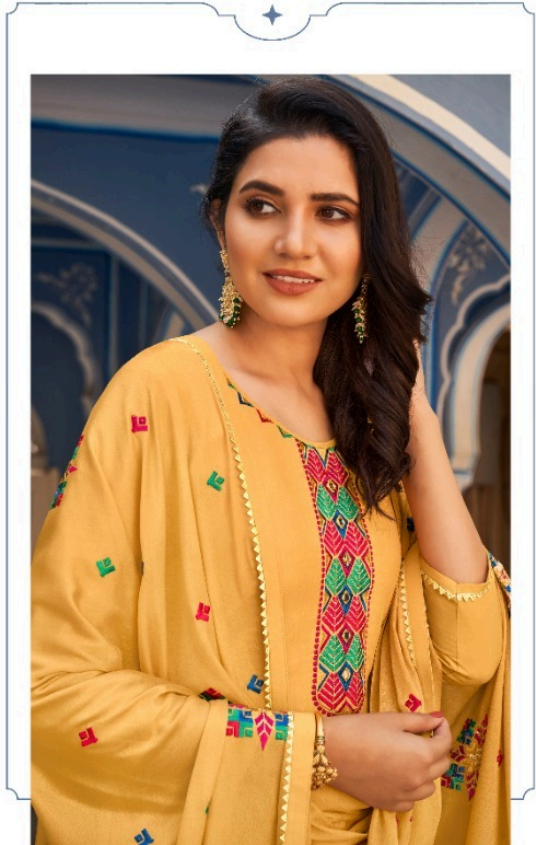
No. 3512





This traditional hue gets a whole new look.

No.3511





No.3513

Define your moods with distinctive silhouettes





COMING SOON



KALARANG

Has Launched New Catalogue

NAGMA

BOOK NOW





KALARANG
NAGMA

