



#R-480-C



TOP- FOX GEORGETL WITH EMBROIDERY
BOTTOM- DULL SANTOON
DUPATTA - NET WITH EMBROIDERY WITH FREEL

- Ⓟ DRY CLEAN ONLY.
- ✘ DO NOT USE ANY BLEACH OR STAIN REMOVING CHEMICAL.
- ☎ IRON THE FABRIC AT MODERATE TEMPERATURE.



#R-480-A



TOP- FOX GEORGETL WITH EMBROIDERY
BOTTOM- DULL SANTOON
DUPATTA - NET WITH EMBROIDERY WITH FREEL

- Ⓟ DRY CLEAN ONLY.
- ✗ DO NOT USE ANY BLEACH OR STAIN REMOVING CHEMICAL.
- ☎ IRON THE FABRIC AT MODERATE TEMPERATURE.





#R-480-B



TOP- FOX GEORGETL WITH EMBROIDERY
BOTTOM- DULL SANTOON
DUPATTA - NET WITH EMBROIDERY WITH FREEL

- Ⓟ DRY CLEAN ONLY.
- ⓧ DO NOT USE ANY BLEACH OR STAIN REMOVING CHEMICAL.
- 🧊 IRON THE FABRIC AT MODERATE TEMPERATURE.





#R-480-C



TOP- FOX GEORGETL WITH EMBROIDERY
BOTTOM- DULL SANTOON
DUPATTA - NET WITH EMBROIDERY WITH FREEL

- Ⓟ DRY CLEAN ONLY.
- ✘ DO NOT USE ANY BLEACH OR STAIN REMOVING CHEMICAL.
- ☎ IRON THE FABRIC AT MODERATE TEMPERATURE.



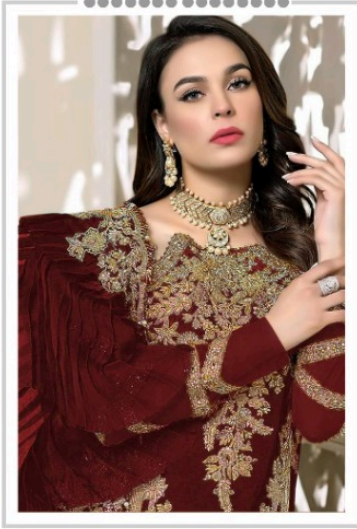
#R-480-D



TOP- FOX GEORGETL WITH EMBROIDERY
BOTTOM- DULL SANTOON
DUPATTA - NET WITH EMBROIDERY WITH FREEL

- Ⓟ DRY CLEAN ONLY.
- ⊗ DO NOT USE ANY BLEACH OR STAIN REMOVING CHEMICAL.
- ☎ IRON THE FABRIC AT MODERATE TEMPERATURE.

Ramsha®
480-NX



#R-480-A



#R-480-B

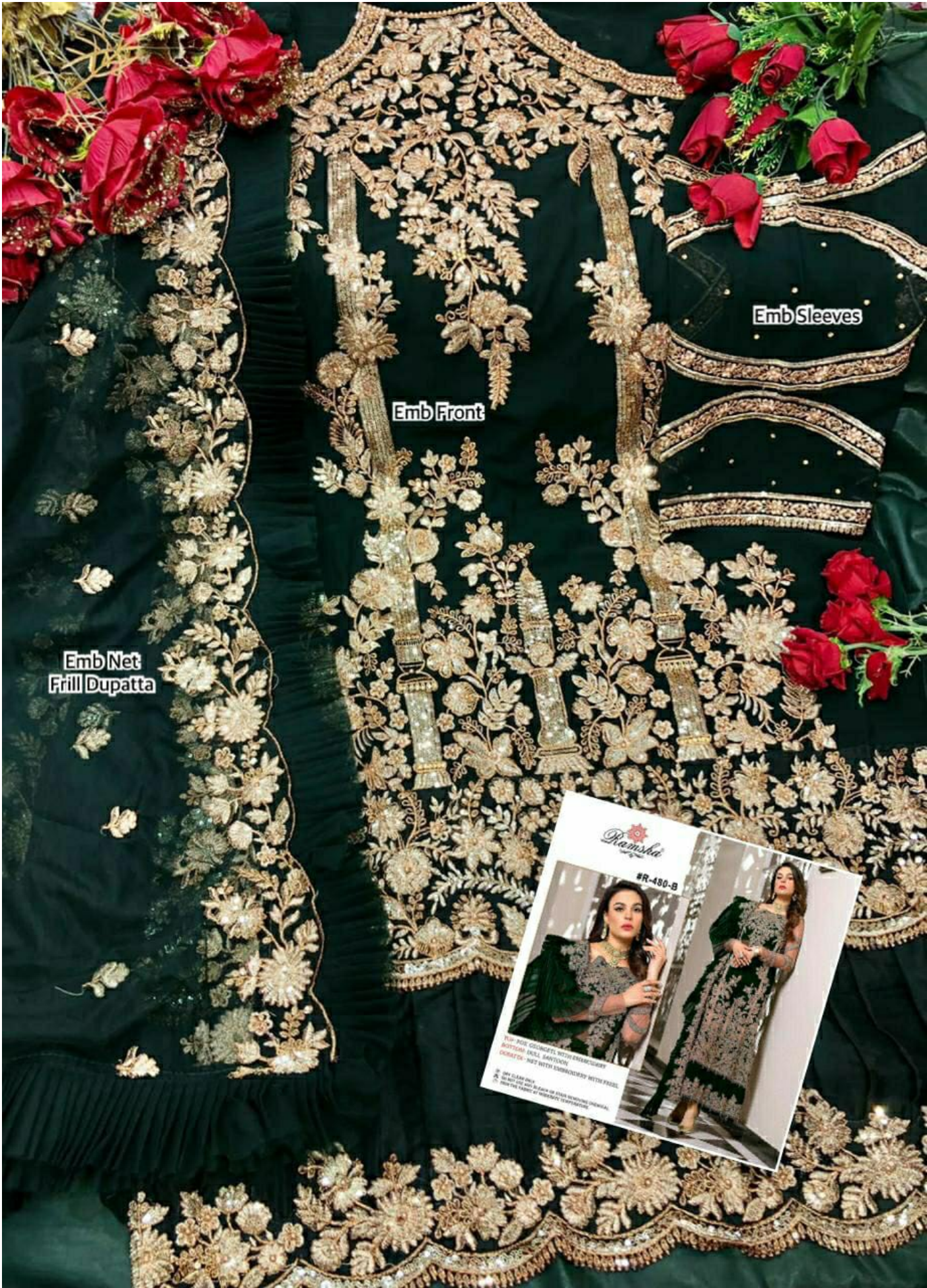


#R-480-C



#R-480-D

Ramsha®
480-NX



Emb Net
Frill Dupatta

Emb Front

Emb Sleeves



Reemsha

#R-480-B

100% PURE ORGANIC COTTON EMBROIDERY
CUSTOMER UNKILL SAVING SON
COURT OF - JUST WITH EMBROIDERY WITH FRILL
DO NOT CLEAN WITH
DO NOT USE HOT IRON OR STEAM IRONING
FROM THE FACTORY OF HIGHEST TECHNOLOGY



Emb Front

Emb Front

Emb Net Dupatta
With Frill Borders

Ramsha

#R-480-A

TOP - FOX GEORGETE, WITH EMBROIDERY
BOTTOM - DULL SATEEN
DUPATTA - NET WITH EMBROIDERY WITH FRILL
* DRY CLEAN ONLY
* DO NOT USE AND BLEACH OR STAIN REMOVING CHEMICAL
* IRON THE FABRIC AT MODERATE TEMPERATURE