



DS-113-B

**TOP- Net Embroidery
with accessories**
Bottom/Iner- Santoon
Dupatta-Net Embroidery



WASHING INSTRUCTIONS
DO NOT USE HOT TYPE OF DYE/CHLORINE BLEACHING AGENTS
NEVER CUTTING AND POLISHING SHOULD BE DONE IN WATER
WELL COMPARTMENT DIRECTLY FOR STAINING
DO NOT KEEP IN TUBS FOR LONGER PERIOD OF TIME
WASH COLORED AND WHITE FABRICS SEPARATELY
REMOVING STAINING FROM FABRIC SHOULD BE DONE IN SHORT TIME
(EXTRA LAKERS AND ACCESSORIES ARE NOT INCLUDED)



DS-113-A

**TOP- Net Embroidery
with accessories**
Bottom/Iner- Santoon
Dupatta-Net Embroidery



WASHING INSTRUCTIONS
DO NOT USE HOT TYPE OF DRYER OR STAIN REMOVERS OR BLEACH
NEVER CUTTING AND ALTERING SHOULD BE DONE IN WASHING WATER
WALL COMPARTMENT DIRECTION FOR STAIN REMOVERS
DO NOT KEEP THE SUIT IN TUBS FOR LONGER PERIODS OF TIME
WASH IN COLD OR WARM WATER GENTLY
REMOVING STAIN FROM SUIT SHOULD BE DONE BY HAND IN COLD WATER
(EXTRA LACE AND ACCESSORIES ARE NOT INCLUDED)



Dinsaa
Suits

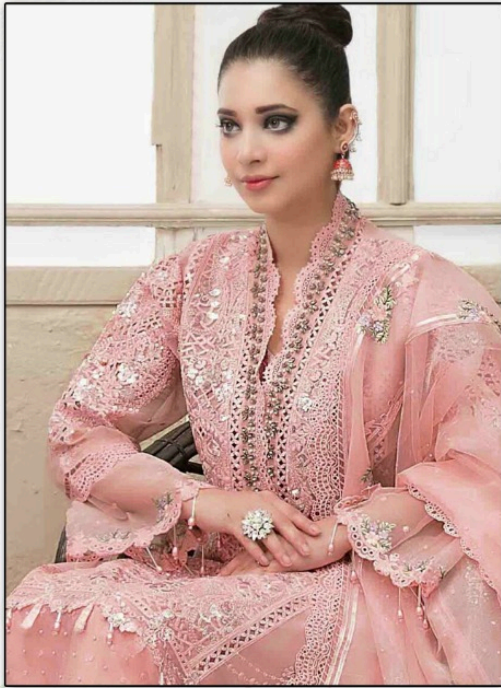


DS-113-C

**TOP- Net Embroidery
with accessories**
Bottom/Iner- Santoon
Dupatta-Net Embroidery



WASHING INSTRUCTIONS
DO NOT USE HOT TYPE OF WATER FOR WASHING OR DRYING
BEFORE CUTTING AND SEWING, SHOULD BE WASHED IN WATER
WELL, COMBUSTION DRYING IS FORBIDDEN
DO NOT KEEP IN TUBS FOR LONGER PERIOD OF TIME
WASH COLOURED AND WHITE FABRICS SEPARATELY
REMOVING STAIN FROM FABRIC SHOULD BE DONE BY SPECIALIST
(EXTRA CARE AND ACCESSORIES ARE NOT INCLUDED)



DS-113-A



DS-113-B



DS-113-C



DS-113-B

**TOP- Net Embroidery
with accessories**
Bottom/Iner- Santoon
Dupatta-Net Embroidery



WASHING INSTRUCTIONS
DO NOT USE HOT TYPE OF DYE/CHLORINE BLEACHING AGENTS
NEVER CUTTING AND POLISHING SHOULD BE DONE IN WATER
WELL COMPARTMENT DIRECTLY FOR STAINING
DO NOT KEEP IN TUBS FOR IN ORDER TO AVOID COP MARKS
WASH COLORED AND WHITE FABRICS SEPARATELY
REMOVING STAINING AND ACCESSORIES ARE NOT INCLUDED
(EXTRA LAKERS AND ACCESSORIES ARE NOT INCLUDED)



DS-113-B
TOP: Net Embroidery with accessories
Bottom/Inner: Sansara
Dupatta: Net Embroidery

