



DS-121-A

TOP- FOX JEORGETTE
Bottom/Iner- SANTOON
Dupatta- EMBROIDERY NET
WITH FRILL



WASHING INSTRUCTIONS
 DO NOT USE HOT TIPS OF IRON OR STARCH REMOVING CHEMICALS
 BEFORE CUTTING AND FINISHING, SHOULD BE STARCHED IN WATER
 FULL COMPARISON DIRECTIONS FOR FINISHES
 DO NOT KEEP IN TUBS FOR LONGER PERIODS OF TIME
 WASH COLORED AND WHITE FABRICS SEPARATELY
 REMOVING STAINERS FROM FABRIC SHOULD BE DONE IN SHORTER PERIODS
 (SPECIAL CARE AND INSTRUCTIONS ARE NOT INCLUDED)



DS-121-A

TOP- FOX JEORGETTE
Bottom/Iner- SANTOON
Dupatta- EMBROIDERY NET
WITH FRILL



WASHING INSTRUCTIONS
 DO NOT USE HOT TYP. IF AVAILABLE, STAIN REMOVAL IS RECOMMENDED.
 BEFORE DYEING AND/OR BLEACHING, SHOULD BE SOAKED IN WATER.
 ALL COMPONENTS SHOULD BE WASHED SEPARATELY.
 DO NOT KEEP WET FABRIC IN TUBS FOR LONGER THAN 2 HOURS.
 WASH COLOURED AND WHITE FABRICS SEPARATELY.
 REMOVAL OF STAIN SHOULD BE DONE BY HAND IN COOL WATER.
 (IF THE LAKE, WASHING AND DRYING ARE NOT INCLUDED)

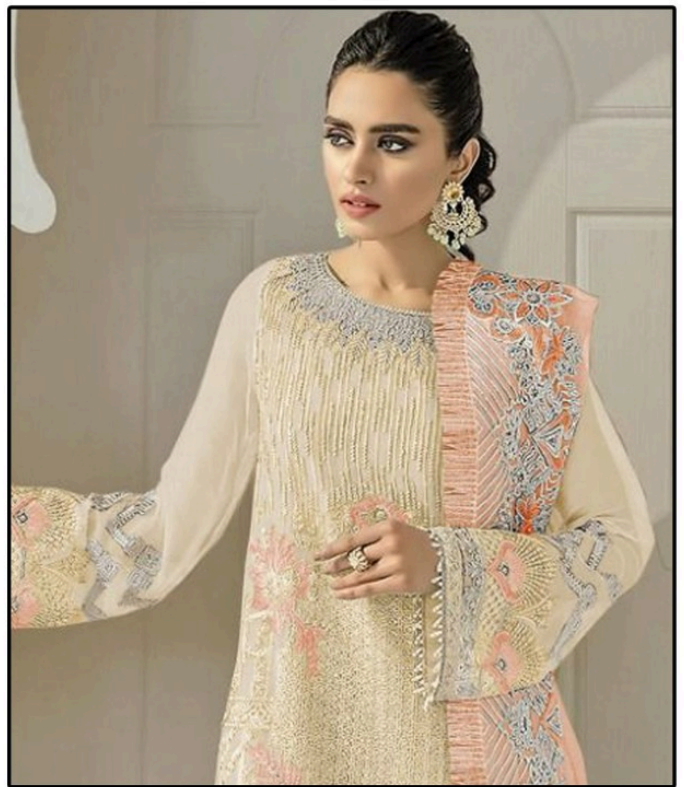


DS-121-C

TOP- FOX JEORGETTE
Bottom/Iner- SANTOON
Dupatta- EMBROIDERY NET
WITH FRILL



WASHING INSTRUCTIONS
 DO NOT USE HOT TYPE OF WATER OR DRYER OR IRONING
 BEFORE CUTTING AND SEWING, SHOULD BE SOFTENED IN WATER
 FULL COMFORT DRESS FOR FEMMES
 DO NOT KEEP IN TUBES FOR LONGER PERIOD OF TIME
 WASH IN COLD WATER AND DRY IN SHADE
 REMOVAL OF STAIN SHOULD BE DONE BY HAND IN SHADE
 (EXTRA LINES AND ACCESSORIES ARE NOT INCLUDED)



DS-121-D

TOP- FOX JEORGETTE
Bottom/Iner- SANTOON
Dupatta- EMBROIDERY NET
WITH FRILL



WASHING INSTRUCTIONS
 DO NOT USE HOT TYPE OF DRYER OR STAIN REMOVER OR BLEACH
 BEFORE CUTTING AND FINISHING, SHOULD BE STARCHED IN WATER
 FULL COMFORT DRESS FOR FORMAL USE
 DO NOT KEEP IN TUBS FOR LONGER PERIOD OF TIME
 WASH IN COLD WATER AND DRY IN SHADE
 REMOVAL OF STAIN SHOULD BE DONE BY HAND IN COLD WATER
 (IF YOU HAVE ANY QUESTIONS, PLEASE CONTACT US)



DS-121-B

TOP- FOX JEORGETTE
Bottom/Iner- SANTOON
Dupatta- EMBROIDERY NET
WITH FRILL



WASHING INSTRUCTIONS
 DO NOT USE HOT TIPS OF IRON OR STARCH REMOVING CHEMICALS
 BEFORE CUTTING AND ALTERING, SHOULD BE STARCHED IN WATER
 FULL COMFORT DIRECTIONS FOR FINISHES
 DO NOT KEEP WET FABRIC IN TUBS FOR LONGER THAN 24 HOURS
 WASH COLORED AND WHITE FABRICS SEPARATELY
 REMOVAL OF STAIN MUST BE DONE BY HAND IN COLD WATER
 (EXTRA LINES AND ACCESSORIES ARE NOT INCLUDED)



DS-121-A



DS-121-B



DS-121-C



DS-121-D







DP-121-C

DP-121-C
Fabric: FINE JERSEY
Sleeves: Long; Length: ANKLE
Features: EMBROIDERY NET WITH FRILL



DS-121-D
TUTU FOR SOCIETY
Material: Net / Lace / SATOON
Neckline: SWEETHEART NECK
WITH FULL