



READYMAD
#R-1036-D



TOP- ORGENZA WORK WITH EMBROIDERY
BOTTOM- SILK STICHED
DUPATTA - ORGENZA WORK WITH EMBROIDERY

- Ⓟ DRY CLEAN ONLY.
- ⓧ DO NOT USE ANY BLEACH OR STAIN REMOVING CHEMICAL.
- ☎ IRON THE FABRIC AT MODERATE TEMPERATURE.





READYMAD
#R-1036-E



TOP- ORGENZA WORK WITH EMBROIDERY
BOTTOM- SILK STICHED
DUPATTA - ORGENZA WORK WITH EMBROIDERY

- Ⓟ DRY CLEAN ONLY.
- ⓧ DO NOT USE ANY BLEACH OR STAIN REMOVING CHEMICAL.
- ☎ IRON THE FABRIC AT MODERATE TEMPERATURE.





READYMAD
#R-1036-F



TOP- ORGENZA WORK WITH EMBROIDERY
BOTTOM- SILK STICHED
DUPATTA - ORGENZA WORK WITH EMBROIDERY

- Ⓟ DRY CLEAN ONLY.
- ⓧ DO NOT USE ANY BLEACH OR STAIN REMOVING CHEMICAL.
- ☎ IRON THE FABRIC AT MODERATE TEMPERATURE.





READYMAD
#R-1036-G

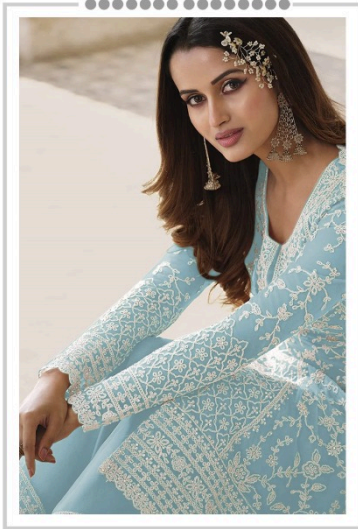


TOP- ORGENZA WORK WITH EMBROIDERY
BOTTOM- SILK STICHED
DUPATTA - ORGENZA WORK WITH EMBROIDERY

- Ⓟ DRY CLEAN ONLY.
- ⓧ DO NOT USE ANY BLEACH OR STAIN REMOVING CHEMICAL.
- ☎ IRON THE FABRIC AT MODERATE TEMPERATURE.



Ramsha[®]
1036-NX



SIZE - XL
READYMAD

Ramsha[®]
1036-NX



#R-1036-D



#R-1036-E



#R-1036-F



#R-1036-G



READYMAD
#R-1036-D



TOP- ORGENZA WORK WITH EMBROIDERY
BOTTOM- SILK STICHED
DUPATTA - ORGENZA WORK WITH EMBROIDERY

- Ⓟ DRY CLEAN ONLY.
- ⓧ DO NOT USE ANY BLEACH OR STAIN REMOVING CHEMICAL.
- ☎ IRON THE FABRIC AT MODERATE TEMPERATURE.

