

A woman with long brown hair is smiling and talking on a black rotary telephone. She is wearing a blue and gold patterned dress with intricate floral and leaf designs. She is also wearing a pearl necklace and a large gold ring. The background is a light-colored wall with a window. The overall style is elegant and traditional.

**Shree**<sup>®</sup>  
FABS

**NX**  
**SANA SAFINAZ**  
**MUZLIN COLLECTION**  
**VOL-9**





SANA SAFINAZ<sup>NX</sup>  
MUZLIN COLLECTION  
VOL-9



2371



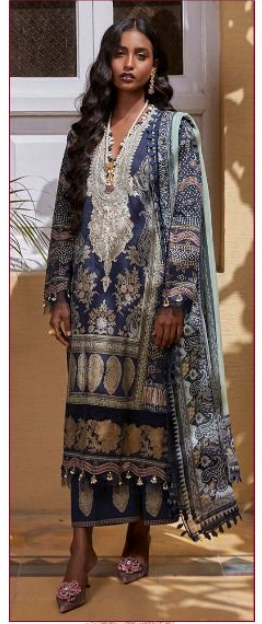
2373



2374



2375



2376

Shree  
FAB



SANA SAFINAZ<sup>NX</sup>  
MUZLIN COLLECTION  
VOL-9







S

SANA SAFINAZ<sup>NX</sup>  
MUZLIN COLLECTION  
VOL-9



2371

sana safinaz



SANA SAFINAZ<sup>NX</sup>  
MUZLIN COLLECTION  
VOL-9

*n*





*n*



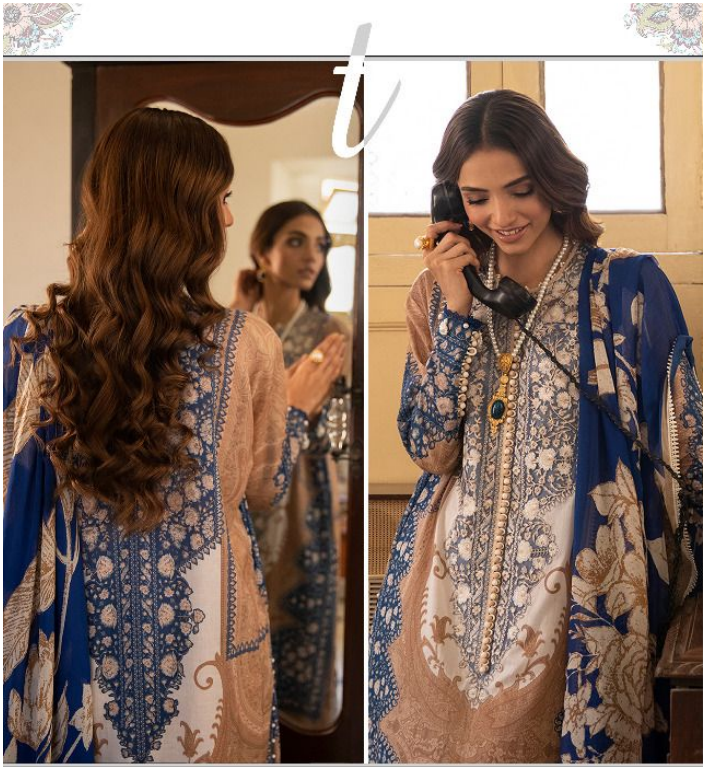
Shree  
FABRI

SANA SAFINAZ<sup>NX</sup>  
MUZLIN COLLECTION  
VOL-9

2373







SANA SAFINAZ<sup>NX</sup>  
MUZLIN COLLECTION  
VOL-9





Shree  
FABR



SANA SAFINAZ<sup>NX</sup>  
MUZLIN COLLECTION  
VOL-9





a

SANA SAFINAZ<sup>NX</sup>  
MUZLIN COLLECTION  
VOL-9



2375



SANA SAFINAZ<sup>NX</sup>  
MUZLIN COLLECTION  
VOL-9

a







Shree®  
PABSI



S

SANA SAFINAZ<sup>NX</sup>  
MUZLIN COLLECTION  
VOL-9



SANA SAFINAZ<sup>NX</sup>  
MUZLIN COLLECTION  
VOL-9





A woman with long brown hair is smiling while talking on a black rotary telephone. She is wearing a blue and gold patterned dress with intricate floral and leaf designs. The dress has a white base with blue and gold patterns. She is also wearing a pearl necklace and a large gold ring. The background is a light-colored wall with a window. The overall style is elegant and traditional.

Shree®  
FABS

NX  
**SANA SAFINAZ**  
**MUZLIN COLLECTION**  
**VOL-9**