

Fepic[®]



Rosemeen[®]
trends



Fepic[®]
Rosemeen[®]
trends
D.NO.91018

Epic®



WASHING INSTRUCTIONS

DO NOT USE ANY TYPE OF BLEACH OR STAIN REMOVING CHEMICALS
BEFORE CUTTING / STITCHING. FABRIC SHOULD BE SOAKED IN WATER
(ALL COMPONENTS SEPARATELY) FOR 15 MINUTES
DO NOT KEEP WET FABRIC IN TWISTED FORM IN ORDER TO AVOID COPY MARKS |
WASH COLOURED AND WHITE FABRICS SEPARATELY
IRON CLOTHES AT MODERATE TEMPERATURE | DO NOT DRY FABRIC IN DIRECT SUNLIGHT
(EXTRA LACES, HANGINGS AND ACCESSORIES ARE NOT INLUDED)

Rosemeen®
trends
D.NO.91018



Epic
Rosemeen
trends



our elegant collection and fashion
define true quintessence in women

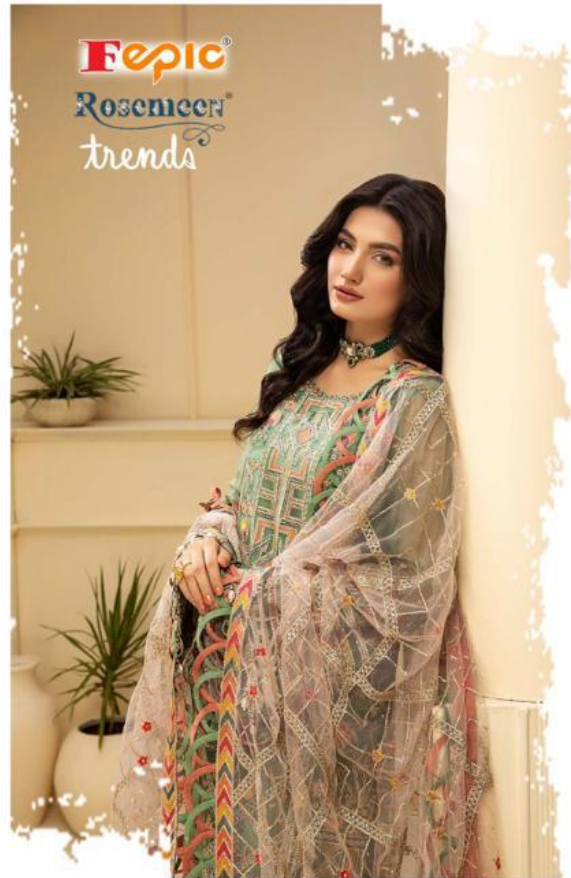
D.NO.91019



Fepic[®]



Rosemeen[®]
trends



D.NO.91016

Epic[®]

Rosemeen[®]

trends



Fepic[®]
Rosmeen[™]
trends



D.NO.91017





D.NO.91016



D.NO.91017



D.NO.91018




D.NO.91019



Fepic

Rosemeen
trends

 : Fepic

 : Fb.com/Fepic11

Epic®



WASHING INSTRUCTIONS

DO NOT USE ANY TYPE OF BLEACH OR STAIN REMOVING CHEMICALS
BEFORE CUTTING / STITCHING, FABRIC SHOULD BE SOAKED IN WATER
(ALL COMPONENTS SEPARATELY) FOR 15 MINUTES
DO NOT KEEP WET FABRIC IN TWISTED FORM IN ORDER TO AVOID COPY MARKS |
WASH COLOURED AND WHITE FABRICS SEPARATELY
IRON CLOTHES AT MODERATE TEMPERATURE | DO NOT DRY FABRIC IN DIRECT SUNLIGHT
(EXTRA LACES, HANGINGS AND ACCESSORIES ARE NOT INLUDED)

Rosemeen®
trends
D.NO.91016



D.NO	TOP	DUPATTA	BOTTOM	CP
91016	BUTTER FLY NET EMBROIDERED WITH HAND WORK	BUTTER FLY NET EMBROIDERED	DULL SANTOON	1220
91017	BUTTER FLY NET EMBROIDERED WITH HAND WORK	BUTTER FLY NET EMBROIDERED	DULL SANTOON	1220
91018	FAUX GEORGETTE EMBROIDERED WITH HAND WORK	BUTTER FLY NET EMBROIDERED	DULL SANTOON	1299
91019	FAUX GEORGETTE EMBROIDERED WITH HAND WORK	NAZMEEN EMBROIDERED	DULL SANTOON	1299
				AVARAGE - 1259

Fepic[®]

Rosemeen[®]
trends

 :_Fepic

 :Fb.com/Fepic11

Epic®



WASHING INTRUCTIONS

DO NOT USE ANY TYPE OF BLEACH OR STAIN REMOVING CHEMICALS
BEFORE CUTTING / STITCHING. FABRIC SHOULD BE SOAKED IN WATER
(ALL COMPONENTS SEPARATELY) FOR 15 MINUTES
DO NOT KEEP WET FABRIC IN TWISTED FROM IN ORDER TO AVOID COPY MARKS |
WASH COLOURED AND WHITE FABRICS SEPARATELY
IRON CLOTHES AT MODERATE TEMPERATURE | DO NOT DRY FABRIC IN DIRECT SUNLIGHT
(EXTRA LACES, HANGINGS AND ACCESSORIES ARE NOT INDUED)

Rosemeen®
trends
D.NO.91019



Epic®



WASHING INSTRUCTIONS

DO NOT USE ANY TYPE OF BLEACH OR STAIN REMOVING CHEMICALS BEFORE CUTTING / STITCHING. FABRIC SHOULD BE SOAKED IN WATER (ALL COMPONENTS SEPARATELY) FOR 15 MINUTES
DO NOT KEEP WET FABRIC IN TWISTED FORM IN ORDER TO AVOID COPY MARKS | WASH COLOURED AND WHITE FABRICS SEPARATELY
IRON CLOTHES AT MODERATE TEMPERATURE | DO NOT DRY FABRIC IN DIRECT SUNLIGHT (EXTRA LACES, HANGINGS AND ACCESSORIES ARE NOT INLUDED)

Rosemeen®
trends
D.NO.91017

