



#R-567-A



TOP- ORGENZA WITH EMBROIDERY WORK
BOTTOM- DULL SANTOON
DUPATTA - ORGENZA WITH EMBROIDERY WORK

- Ⓟ DRY CLEAN ONLY.
- ⊗ DO NOT USE ANY BLEACH OR STAIN REMOVING CHEMICAL.
- ☎ IRON THE FABRIC AT MODERATE TEMPERATURE.





#R-567-A



TOP- ORGENZA WITH EMBROIDERY WORK
BOTTOM- DULL SANTOON
DUPATTA - ORGENZA WITH EMBROIDERY WORK

- Ⓟ DRY CLEAN ONLY.
- ⓧ DO NOT USE ANY BLEACH OR STAIN REMOVING CHEMICAL.
- ☎ IRON THE FABRIC AT MODERATE TEMPERATURE.





#R-567-B



TOP- ORGENZA WITH EMBROIDERY WORK
BOTTOM- DULL SANTOON
DUPATTA - ORGENZA WITH EMBROIDERY WORK

- Ⓟ DRY CLEAN ONLY.
- ⊗ DO NOT USE ANY BLEACH OR STAIN REMOVING CHEMICAL.
- ☎ IRON THE FABRIC AT MODERATE TEMPERATURE.



#R-567-C



TOP- ORGENZA WITH EMBROIDERY WORK
BOTTOM- DULL SANTOON
DUPATTA - ORGENZA WITH EMBROIDERY WORK

- Ⓟ DRY CLEAN ONLY.
- ⊗ DO NOT USE ANY BLEACH OR STAIN REMOVING CHEMICAL.
- ☎ IRON THE FABRIC AT MODERATE TEMPERATURE.



#R-567-D

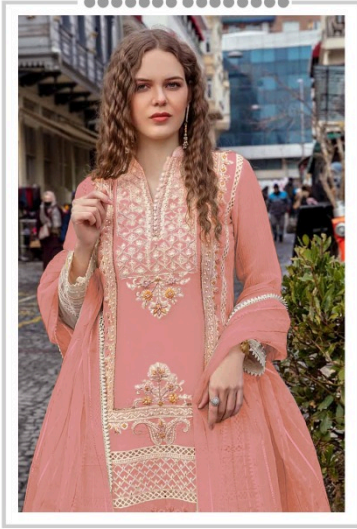


TOP- ORGENZA WITH EMBROIDERY WORK
BOTTOM- DULL SANTOON
DUPATTA - ORGENZA WITH EMBROIDERY WORK

- Ⓟ DRY CLEAN ONLY.
- ⓧ DO NOT USE ANY BLEACH OR STAIN REMOVING CHEMICAL.
- ☎ IRON THE FABRIC AT MODERATE TEMPERATURE.



Ramsha®
567-NX



#R-567-A



#R-567-B



#R-567-C



#R-567-D

Ramsha®
567-NX



TOP- ORGANZA WITH EMBROIDERY WORK
BOTTOM- DULL SANTONI
DURATEA- ORGANZA WITH EM/EMBROIDERY WORK

DRY CLEAN ONLY
DO NOT USE ANY BLEACH
IRON THE FABRIC AT MEDIUM TEMPERATURE