

Dinsaa  
Suits



DS-150-F

**Top- FOX GEORGETTE WITH WORK**

**Bottom/Iner- SANTOON**

**Dupatta- NET DUPATTA**

**WASHING INSTRUCTIONS**  
DO NOT USE ANY TYPE OF BLEACH OR STAIN REMOVING AGENTS AS  
BEFORE DYEING OR CLEANING, SHOULD BE SOAKED IN WATER  
ALL COMPONENTS SEPARATELY FOR 15 MINUTES  
DO NOT USE HOT WATER. IN PROTECTION IN PROTECTIVE BAGS OF FABRIC  
WASH IN COLD AND WASH FABRICS SEPARATELY  
IRON CLOTHES AT MODERATE TEMPERATURES ONLY. DO NOT USE HIGH HEAT TO DRY  
EXTRA CARE IN WASHING AND DRYING ARE NOT INCLUDED



**Top- FOX GEORGETTE WITH WORK**  
**Bottom/Iner- SANTOON**  
**Dupatta- NET DUPATTA**

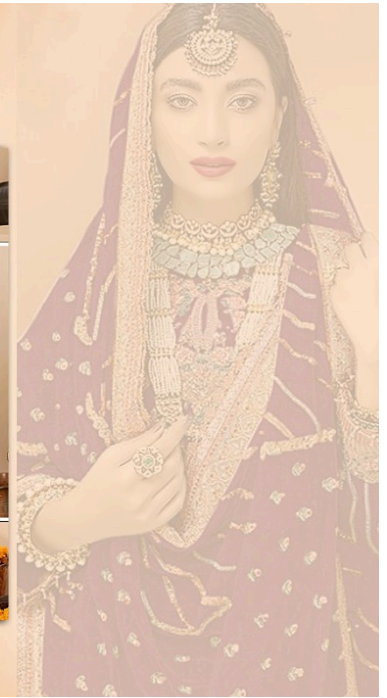


DS-150-E

DS-150-F

DS-150-G

DS-150-H



Dinsaa  
Suits



DS-150-F

**Top- FOX GEORGETTE WITH WORK**

**Bottom/Iner- SANTOON**

**Dupatta- NET DUPATTA**

**WASHING INSTRUCTIONS**  
DO NOT USE ANY TYPE OF BLEACH OR STAIN REMOVING CHEMICALS  
BEFORE DRYING OR CLEANING. SHOULD BE DRYED IN WATER  
ALL COMPONENTS SHOULD BE SEPARATED  
DO NOT USE HOT IRON. IN PROTECTION IN PROTECTIVE COVER OF IRONING  
IRON CLOTHES AND WHITE FABRICS SEPARATELY  
NON-COLORED FABRICS SHOULD BE DRYED IN SHADE OR IN THE SHADOW  
EXTRA CARE WASHING AND DRYING ARE NOT INCLUDED



DS-150-G

**Top- FOX GEORGETTE WITH WORK**

**Bottom/Iner- SANTOON**

**Dupatta- NET DUPATTA**

**WASHING INSTRUCTIONS**  
DO NOT USE ANY TYPE OF BLEACH OR STAIN REMOVING CHEMICALS  
BEFORE DRYING OR CLEANING. SHOULD BE DRYED IN WATER  
ALL COMPONENTS SEPARATELY FOR 15 MINUTES  
DO NOT USE HOT IRON. IN PROTECTION IN PROTECTIVE COVER OF IRON  
IRON-COLOURED AND WHITE FABRICS SEPARATELY  
NON-COLORED FABRICS SHOULD BE DRYED IN SHADE OR IN THE SHADOW  
EXTRA CARE WASHING AND DRYING ARE NOT INCLUDED



DS-150-E

**Top- FOX GEORGETTE WITH WORK**

**Bottom/Iner- SANTOON**

**Dupatta- NET DUPATTA**

**WASHING INSTRUCTIONS**  
DO NOT USE ANY TYPE OF BLEACH OR STAIN REMOVING AGENTS AS  
BEFORE DYEING OR CLEANING, SHOULD BE SOAKED IN WATER  
ALL COMPONENTS SEPARATELY FOR 15 MINUTES  
DO NOT USE HOT WATER IN PROCESSION IN PROTECTIVE BAGS OF FABRIC  
WASH IN COLD AND WASH SEPARATELY  
IRON CLOTHES AT MODERATE TEMPERATURES ONLY ON REVERSE SIDE OF GARMENT  
EXTRA CARE WASHING AND DRYING ARE NOT INCLUDED



DS-150-H

**Top- FOX GEORGETTE WITH WORK**

**Bottom/Iner- SANTOON**

**Dupatta- NET DUPATTA**

**WASHING INSTRUCTIONS**  
DO NOT USE ANY TYPE OF BLEACH OR STAIN REMOVING CHEMICALS  
BEFORE DRYING/IRONING/FABRIC SHOULD BE SOAKED IN WATER  
ALL COMPONENTS SEPARATELY FOR 15 MINUTES  
DO NOT USE HOT WATER IN PROTECTION IN PROTECTIVE FACED TOP FABRIC  
WASH IN COLD AND WASH FABRICS SEPARATELY  
IRON CLOTHES AT MODERATE TEMPERATURES ONLY ON FABRIC AS DIRECTED ON LABEL  
EXTRA SPECIAL WASHING AND CARE INSTRUCTIONS ARE NOT INCLUDED