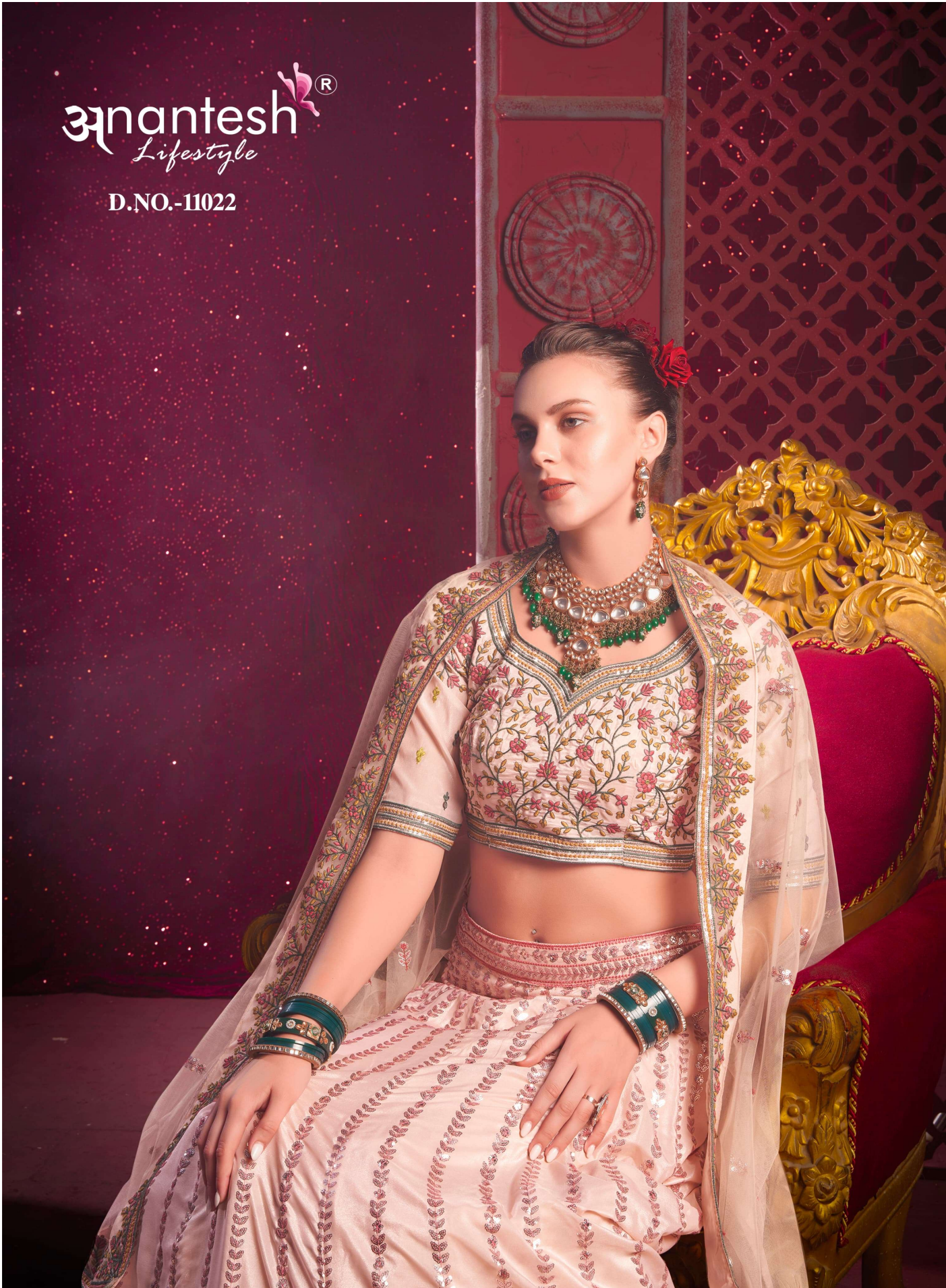
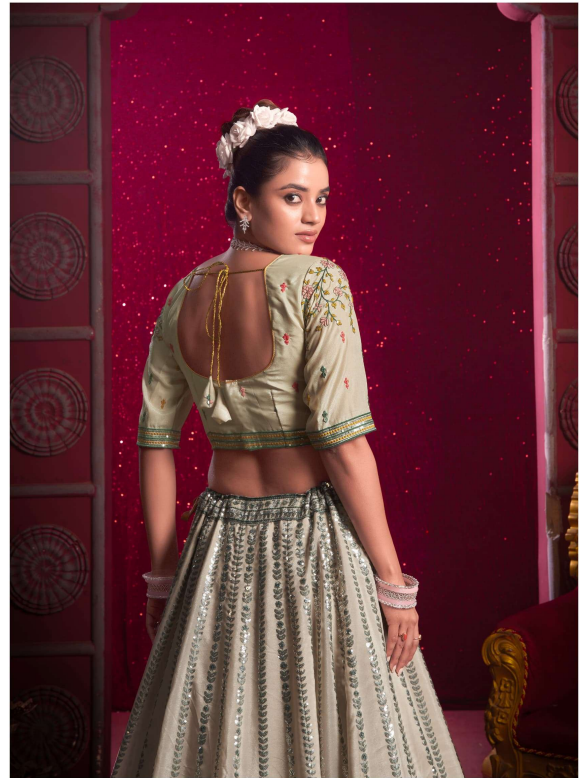


anantesh[®]
Lifestyle

D.NO.-11022



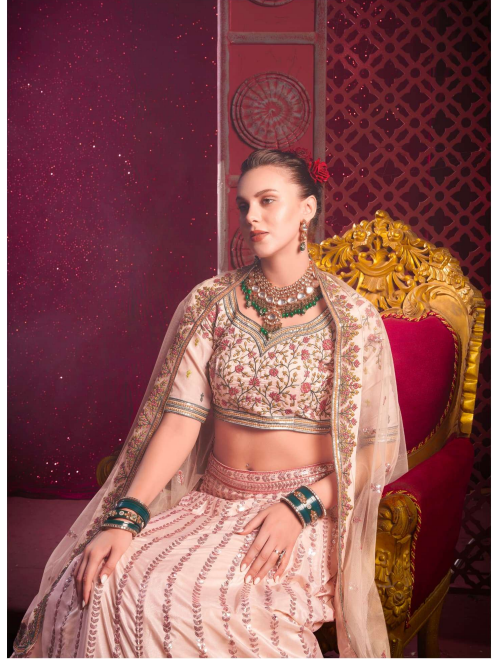


THE LEHENGA SKIRT BEING THE CENTERPIECE PROVIDED A CANVAS FOR THE ARTISANS TO TRY OUT THEIR SKILLS, AND WITH TIME, THE CURRENT DESIGNERS GIVE IT A CONTEMPORARY TWIST, KEEPING THE MAIN SILHOUETTE SIMILAR TO ITS ANCIENT TWINS

11021



अनंतेश®
Lifestyle

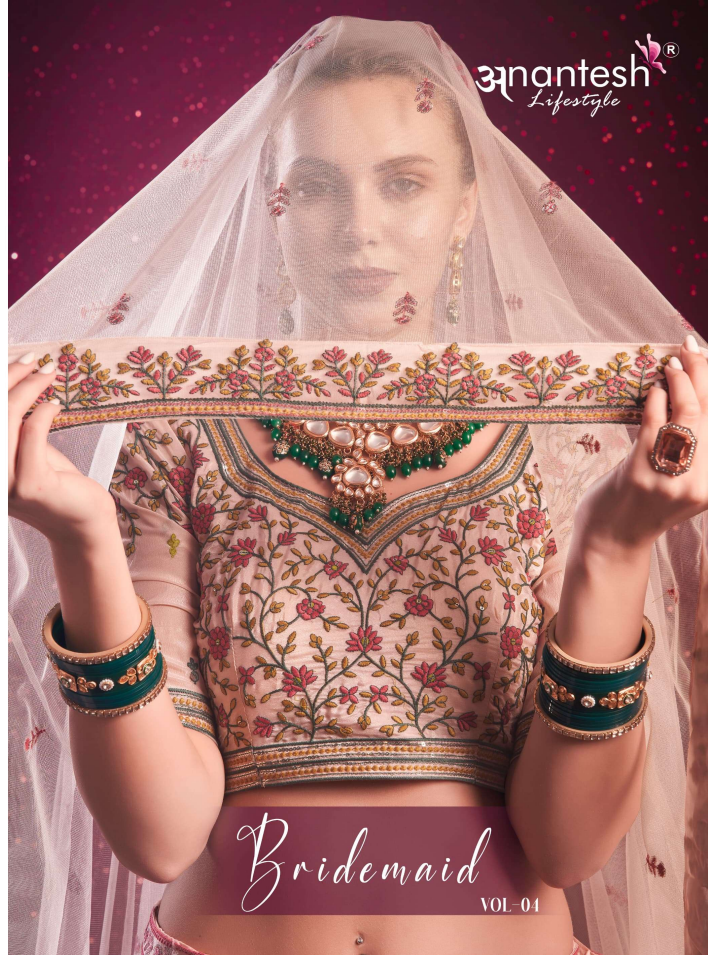


AH ISN'T IT EVERY GIRL'S DREAM TO WEAR A DESIGNER LEHENGA ON HER WEDDING, CLICKING PICTURES WITH HER SIGNIFICANT OTHER UNDER A JHAROKHA IN A FORT AND WHAT NOT

11022

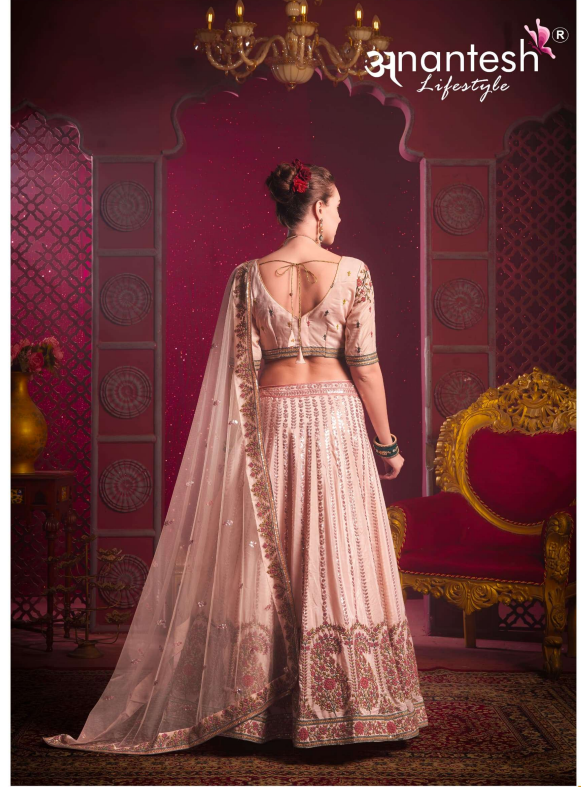


अनंतेश®
Lifestyle





THESE ARE A CULMINATION OF THE VARIOUS THOUGHTS I HAVE HEARD OVER THE YEARS STUDYING ABOUT FASHION AND READING AN INSURMOUNTABLE NUMBER OF ARTICLES OVER THE MATTER. LEHENGAS HERE ARE USED AS AN EXAMPLE TO REFER TO THE WIDE EPIDEMIC OF UBER-ETHNIC WEAR IN COUTURE COLLECTIONS



anantesh[®]
Lifestyle





anantesh®
Lifestyle



FOR THE COMMON FOLK, LEHENGAS AUTOMATICALLY BRING OUR MINDS TO THE BIG FAT INDIAN WEDDING,
AND IT SEEMS ALMOST EVERY DESIGNER HAS THAT CONCEPT IN THEIR COLLECTION TIME AND AGAIN



अनंतेश®
Lifestyle



AH ISN'T IT EVERY GIRL'S DREAM TO WEAR A DESIGNER LEHENGA ON HER WEDDING, CLICKING PICTURES WITH HER SIGNIFICANT OTHER UNDER A JHARKHA IN A FORT AND WHAT NOT





AH ISN'T IT EVERY GIRL'S DREAM TO WEAR A DESIGNER LEHENGA ON HER WEDDING, CLICKING PICTURES WITH HER SIGNIFICANT OTHER UNDER A JHAROKHA IN A FORT AND WHAT NOT



anantesh[®]
Lifestyle



OVER TIME, I HAVE DEVELOPED A LOVE-HATE RELATIONSHIP WITH THE LEHENGA. WHILE ITS ALL PRAISE FOR SAREES, LEHENGAS ON THE OTHER HAND ARE INCESSANT SPOTLIGHT IN INDIAN COLLECTIONS. WHY, THOUGHT IS THERE NO SPACE TO SQUISH IN A BIT OF VARIETY



Anantesh[®]
Lifestyle

D.NO.-11022



Anantesh[®]
Lifestyle



Anantesh[®]
Lifestyle

D.NO.-11022



anantesh[®]
Lifestyle

D.NO.-11022



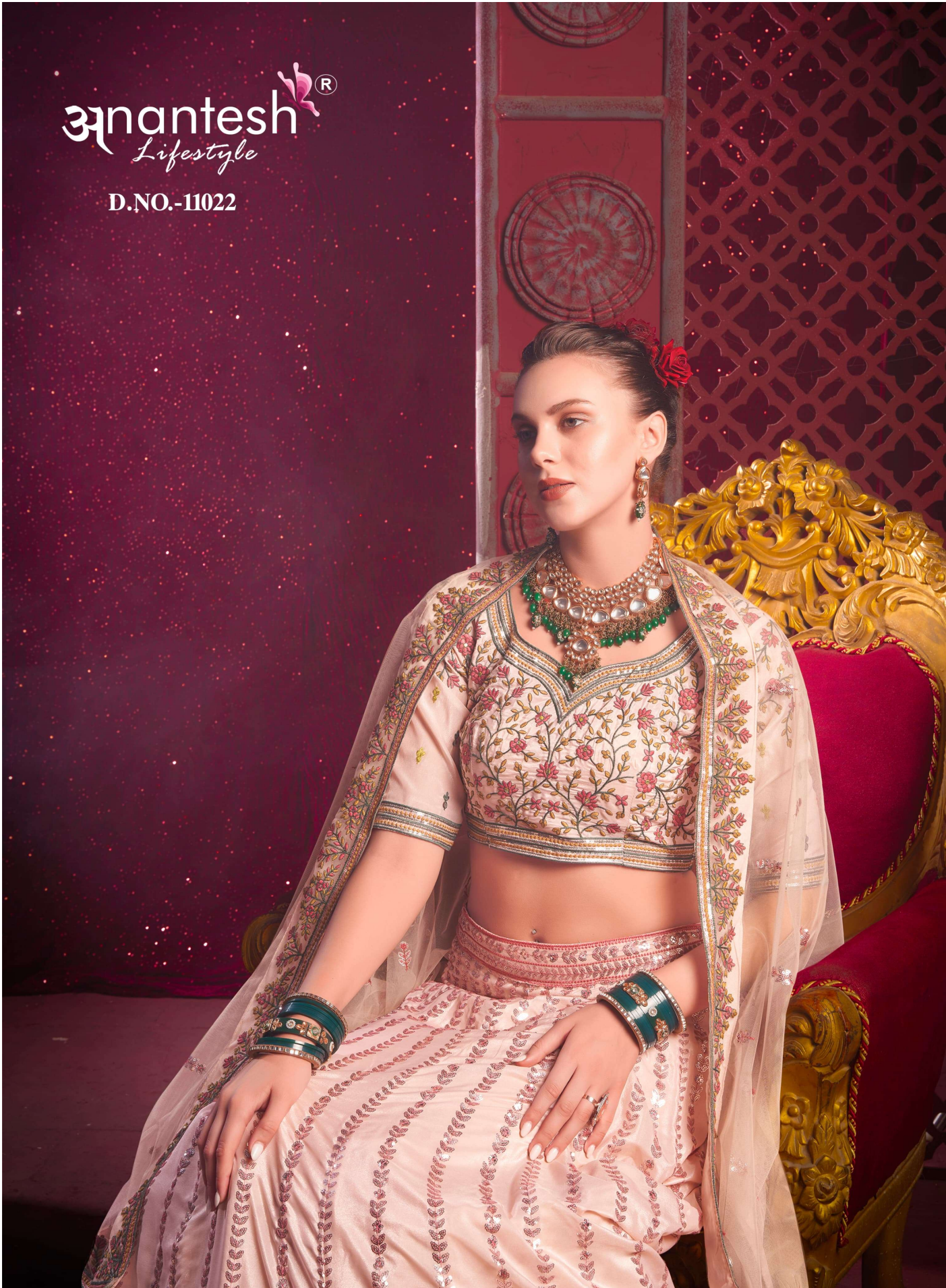
Anantesh[®]
Lifestyle

D.NO.-11022



anantesh[®]
Lifestyle

D.NO.-11022



Bridemaid

VOL-04

Anantesh
Lifestyle



11021



11022

CODE	MAIN COLOUR	LEHENGA FABRIC	BLOUSE FABRIC	DUPATTA FABRIC (DOUBLE DUPATTA)	SIZE SEMI STITCHED	READYMADE	WEIGHT	WORK DETAILS	PRICE (EXCLUDING GST 12%)
11021	CREAMIEE	VENILA SHINE SILK	VENILA SHINE SILK	PREMIUM NET	Size upto 42 bust and waist	XS,S,M,L,XL	3kg.	PREMIUM SEQUANCE AND EMBROIDERY THREAD WORK	5495/-
11022	PEACH	VENILA SHINE SILK	VENILA SHINE SILK	PREMIUM NET	Size upto 42 bust and waist	XS,S,M,L,XL	3kg.	PREMIUM SEQUANCE AND EMBROIDERY THREAD WORK	5495/-

TOTAL AMOUNT 10990/-
12% GST TEX EXTRA

AVRG AMOUNT 5495/-

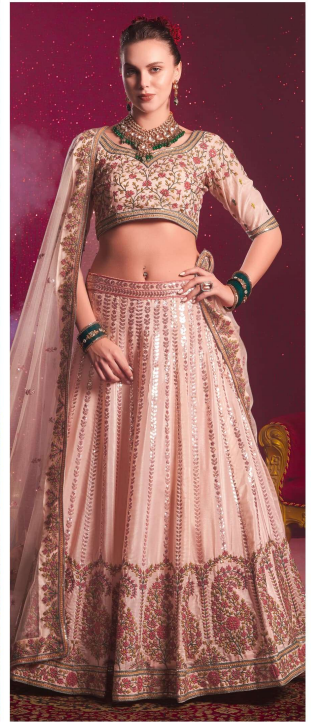
PLEASE NOTE :-THERE IS TWO OPTION SEMI STITCH AND READYMADE PRODUCT . READY MADE WILL TAKE 2 DAYS AFTER ORDER



Anantesh[®]
Lifestyle



11021



11022



anantesh[®]
Lifestyle

D.NO.-11022