



DS-178-C

Top- ORGANZA EMBROIDERY WITH APLIQUE & PEARL WORK

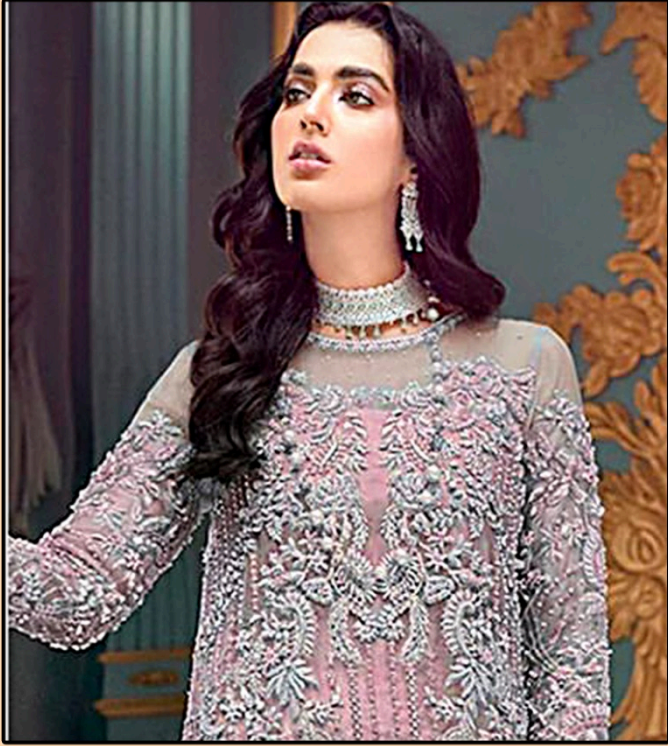
Bottom/Iner- SANTOON

Dupatta- ORGANZA EMBROIDERY

WASHING INSTRUCTIONS
 DO NOT USE ANY TYPE OF BLEACH OR SOAKING OR DYEING CHEMICALS
 BEFORE GETTING INTO THE WASHING MACHINE SHOULD BE SOAKED IN WATER
 ALL COMPONENTS SEPARATELY FOR 5 MINUTES
 DO NOT USE HOT IRON OR TUMBLE DRYER INSTEAD OF HANG DRY
 WASH CLOTHES AND WASH FABRICS SEPARATELY
 IRON CLOTHES AT MEDIUM TEMPERATURE TO AVOID DAMAGE TO FABRIC
 DRYING CLOTHES IN WASHING MACHINE IS NOT ALLOWED



Dinsaa
 Suit



DS-178-C

**Top- ORGANZA EMBROIDERY WITH
APLIQUE & PEARL WORK**

Bottom/Iner- SANTOON

Dupatta- ORGANZA EMBROIDERY

WASHING INSTRUCTIONS
 DO NOT USE ANY TYPE OF BLEACH OR SOAKING OR DYEING CHEMICALS
 BEFORE GETTING INTO THE WASHING MACHINE. SHOULD BE WASHED IN COLD WATER
 ALL COMPONENTS SEPARATELY FOR 5 MINUTES
 DO NOT USE HOT IRON OR TUMBLER DRYER. PRESS TO AVOID OF MARKS
 WASH CLOTHES AND WASH FABRICS SEPARATELY
 IRON CLOTHES AT MEDIUM TEMPERATURE. DO NOT USE FROM ABOVE OBJECTS UNLESS OFF
 BETWEEN WASHING AND ACCESSORIES ARE NOT INCLUDED



**Dinsaa
Suit**