



MARIYA B  PRINT
VOL-16





MARIYA B  PRINT
VOL-16





MARIYA B M PRINT
VOL-16





MARIYA B  PRINT
VOL-16



3512



MARIYA B M PRINT
VOL-16



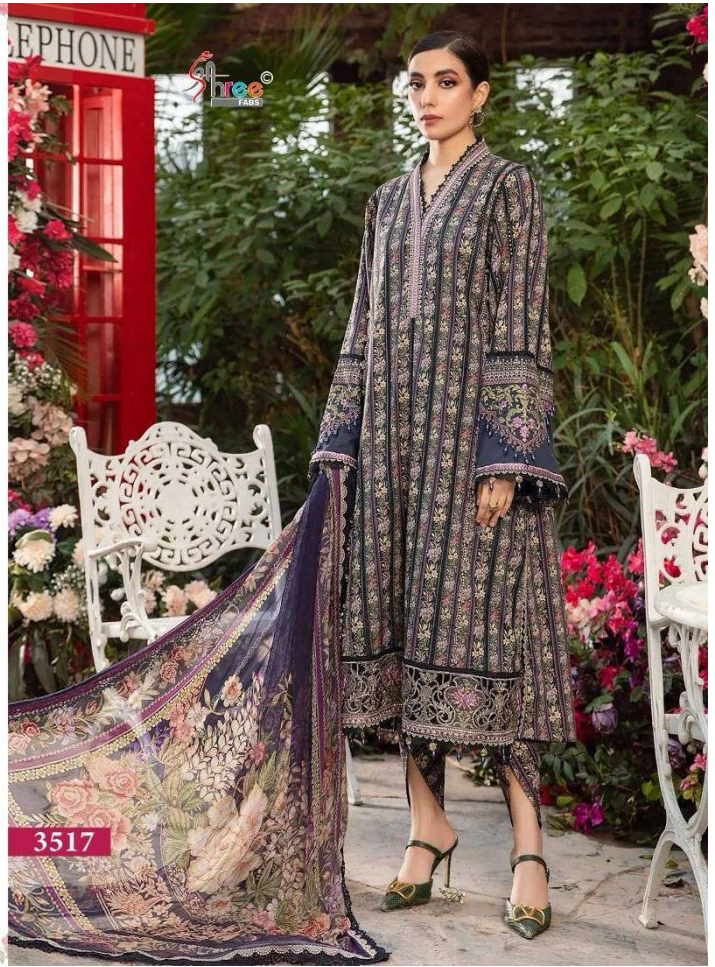


MARIYA B M PRINT
VOL-16





MARIYA B  PRINT
VOL-16



3517



MARIYA B M PRINT
VOL-16





MARIYA B  PRINT
VOL-16



3518



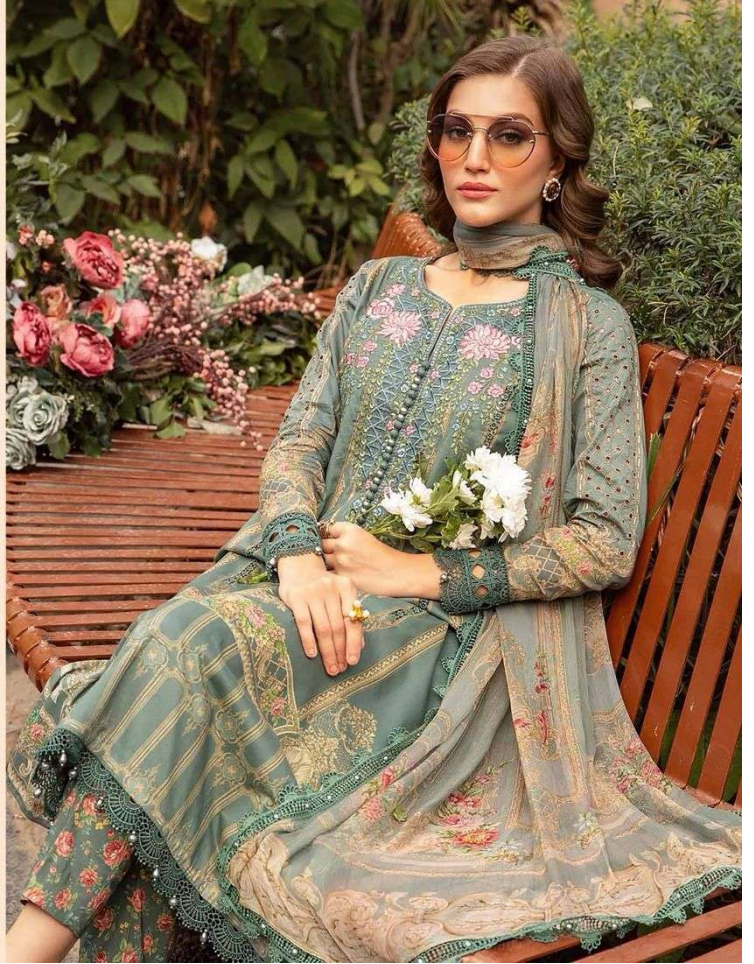
MARIYA B  PRINT
VOL-16



3519



MARIYA B  PRINT
VOL-16





3512

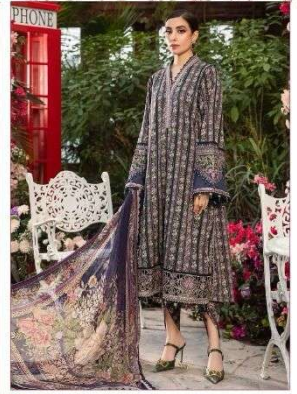


3513

Shree
PARIS



3516



3517

MARIYA B M PRINT
VOL-16



3514



3515



3518



3519



Shree

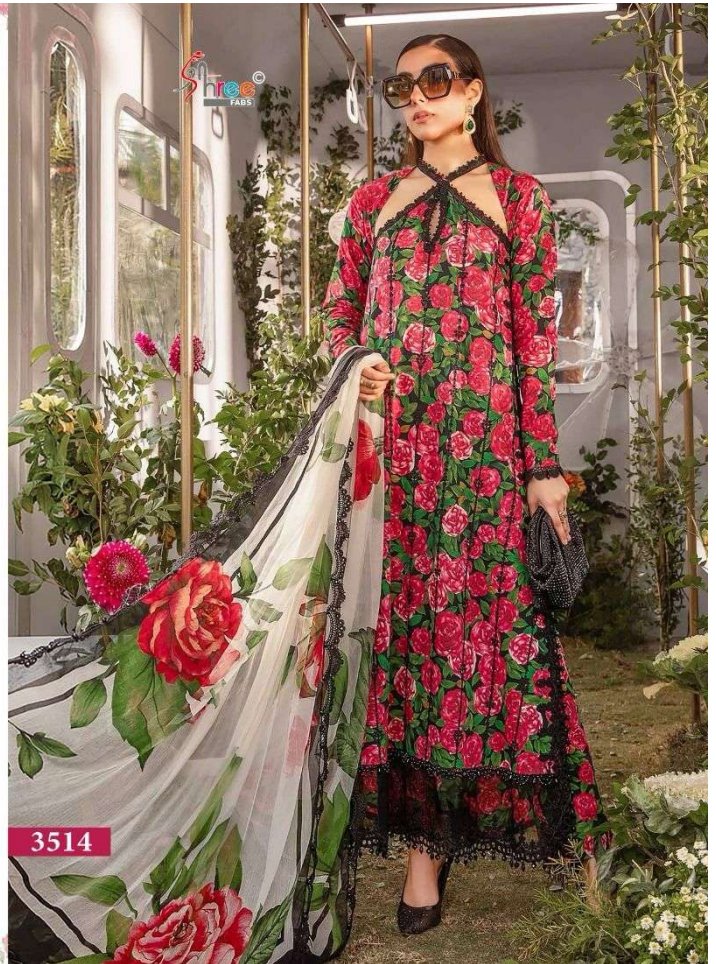


MARIYA B M PRINT
VOL-16

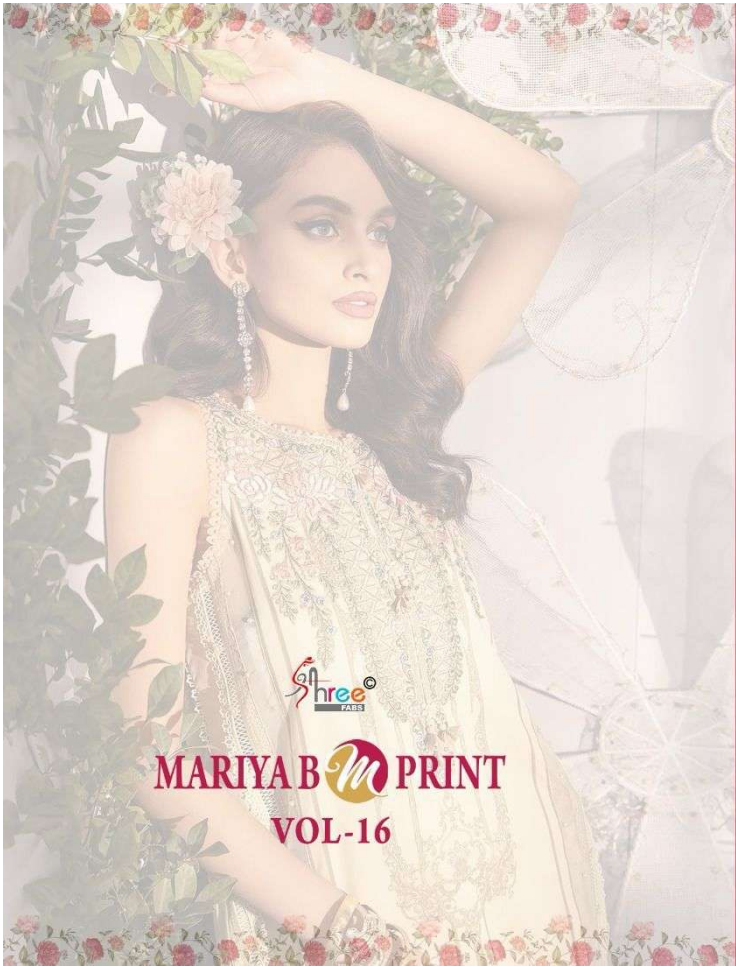
The right side of the page features a decorative border at the top and bottom with a repeating pattern of small pink and red roses. At the top center, there is a logo for 'Shree' with a stylized 'S' and 'hree' in a blue and red font. Below the logo is a framed image of the same floral dress, but this time the woman is wearing a large, wide-brimmed black hat and is holding a silver suitcase. The background of this smaller image is filled with various colorful flowers. At the bottom of the right side, the text 'MARIYA B M PRINT' is written in a bold, serif font, with a stylized 'M' logo in a green circle. Below this, 'VOL-16' is written in a smaller, bold, serif font.

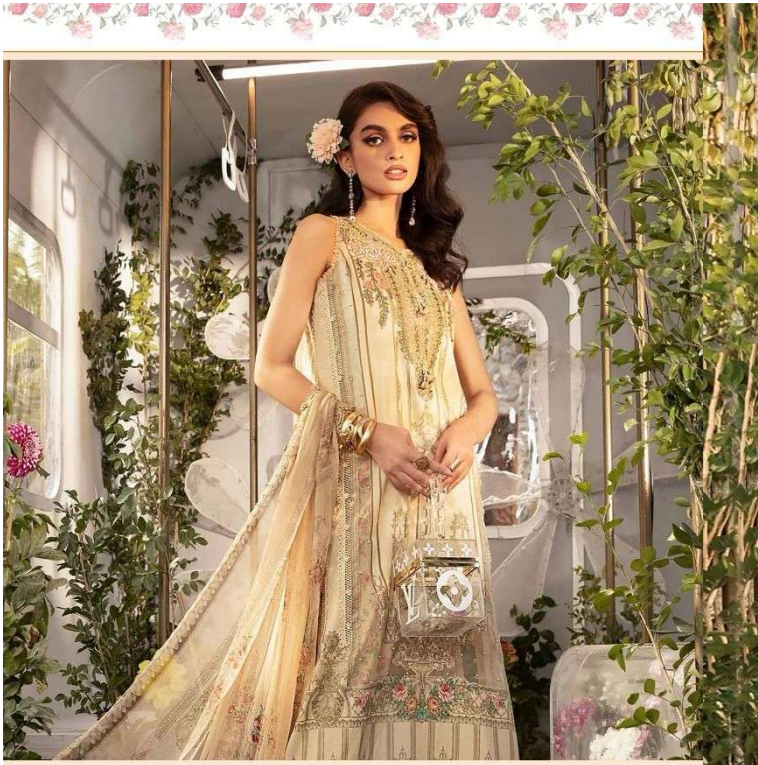


MARIYA B  PRINT
VOL-16



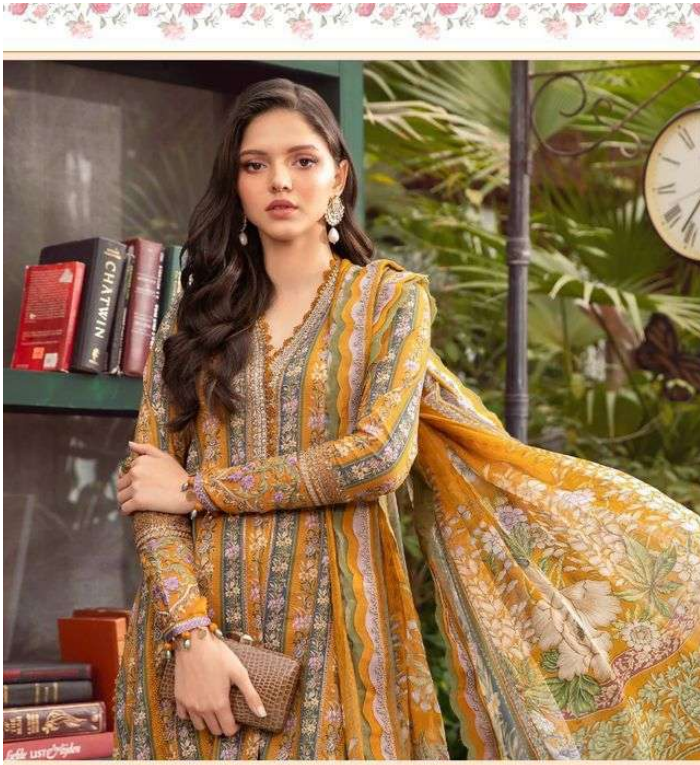
3514



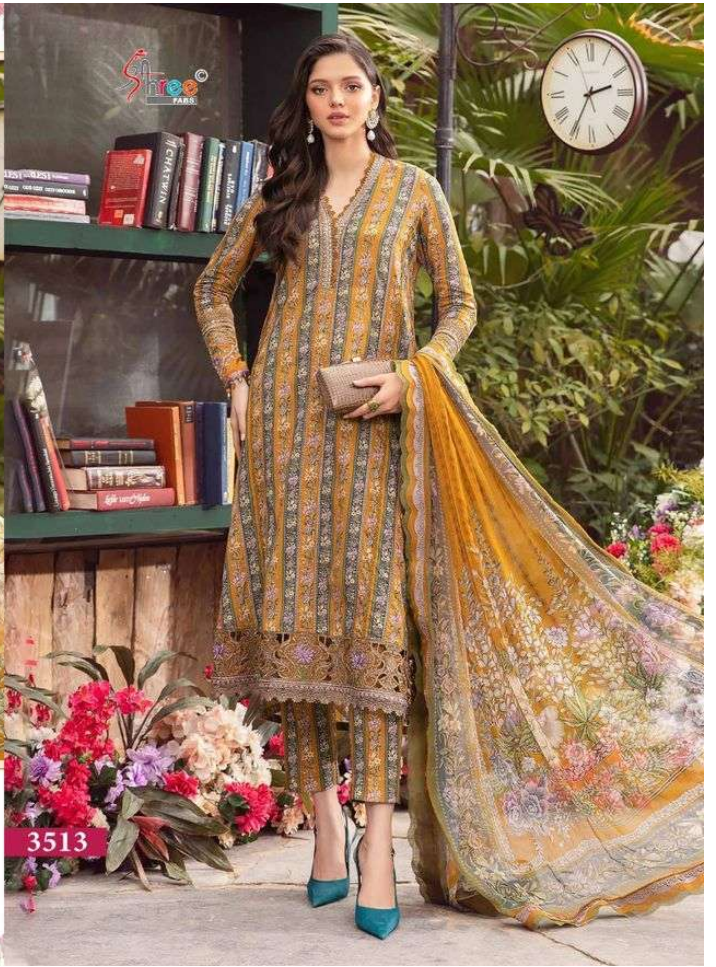


MARIYA B  PRINT
VOL-16

3515



MARIYA B  PRINT
VOL-16



3513



Shree
F&B



MARIYA B  PRINT
VOL-16





MARIYA B  PRINT
VOL-16

