



MARIYA B  PRINT
VOL-16





MARIYA B  PRINT
VOL-16





MARIYA B M PRINT
VOL-16





MARIYA B  PRINT
VOL-16



3512



MARIYA B M PRINT
VOL-16





MARIYA B M PRINT
VOL-16





MARIYA B  PRINT
VOL-16





MARIYA B M PRINT
VOL-16





MARIYA B  PRINT
VOL-16



3518



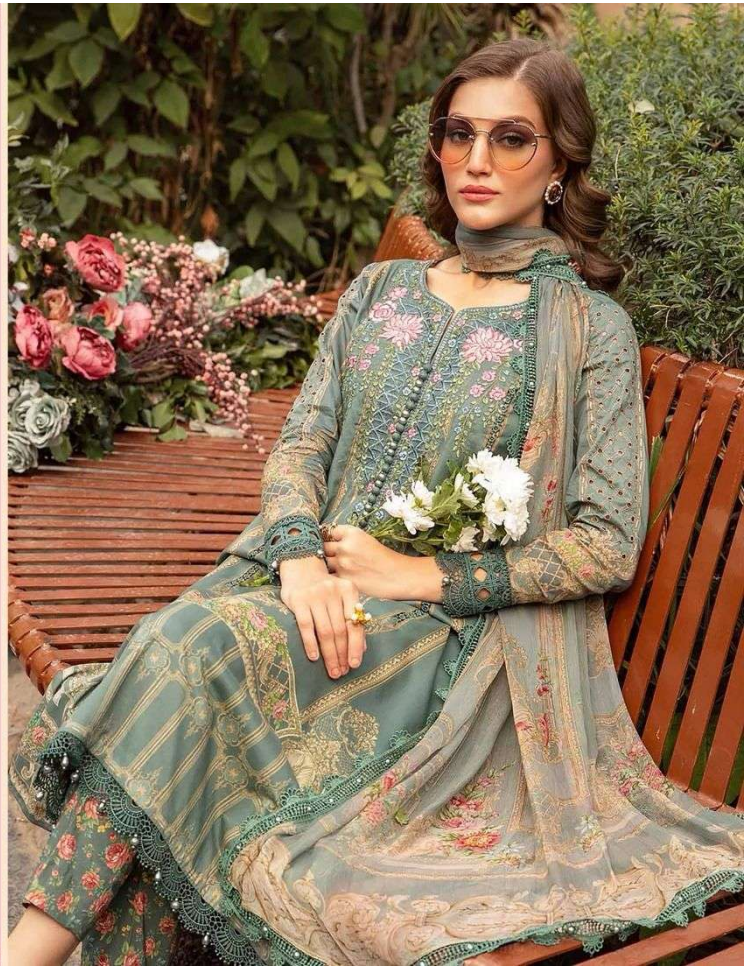
MARIYA B  PRINT
VOL-16



3519



MARIYA B  PRINT
VOL-16





3512

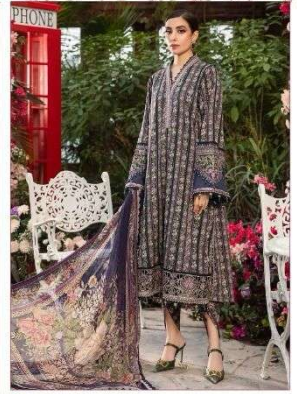


3513

Shree
PARIS



3516



3517

MARIYA B M PRINT
VOL-16



3514



3515



3518



3519



Shree

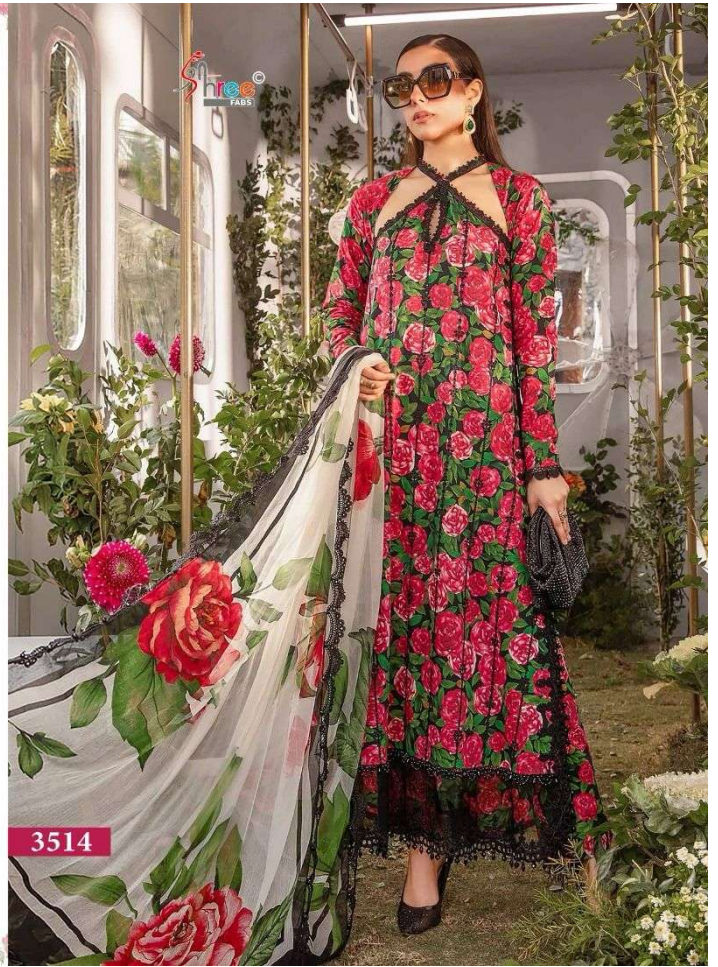


MARIYA B  PRINT
VOL-16

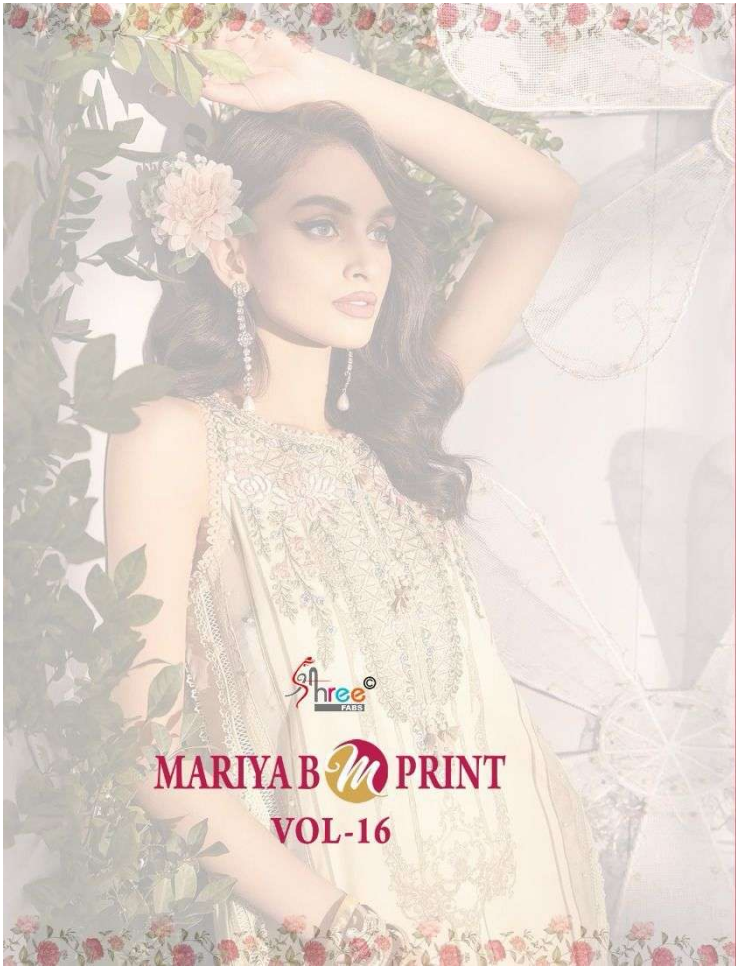
The right side of the page features a decorative border at the top and bottom with a repeating floral pattern. At the top center, there is a logo for 'Shree' with a stylized 'S' and 'hree' in a blue and red font. Below the logo is a framed image showing a woman wearing the same floral dress as in the main image, but with a wide-brimmed black hat and a suitcase, set against a background of various flowers. At the bottom of this section, the text 'MARIYA B  PRINT' is written in a serif font, with 'VOL-16' centered below it.

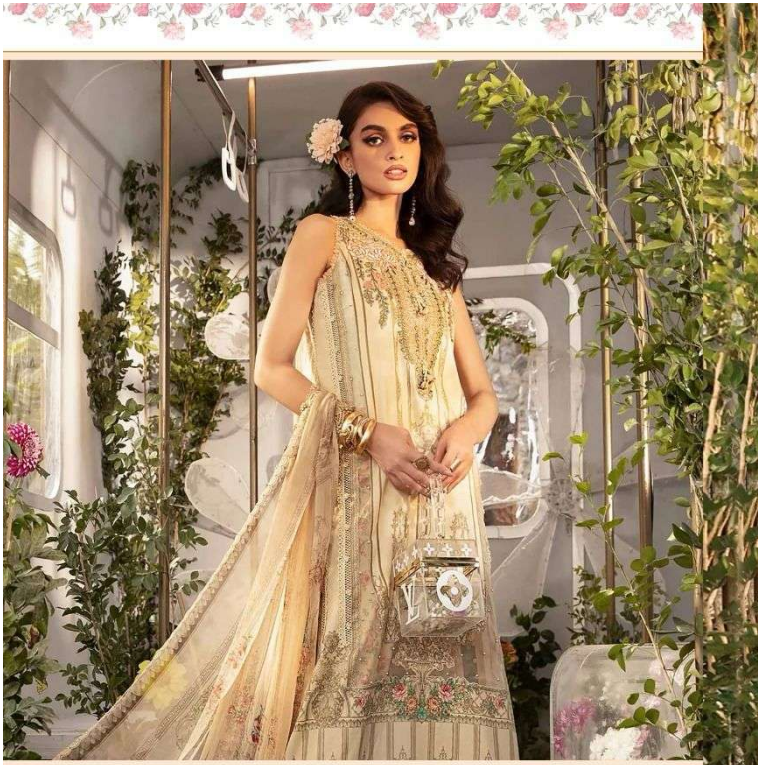


MARIYA B  PRINT
VOL-16



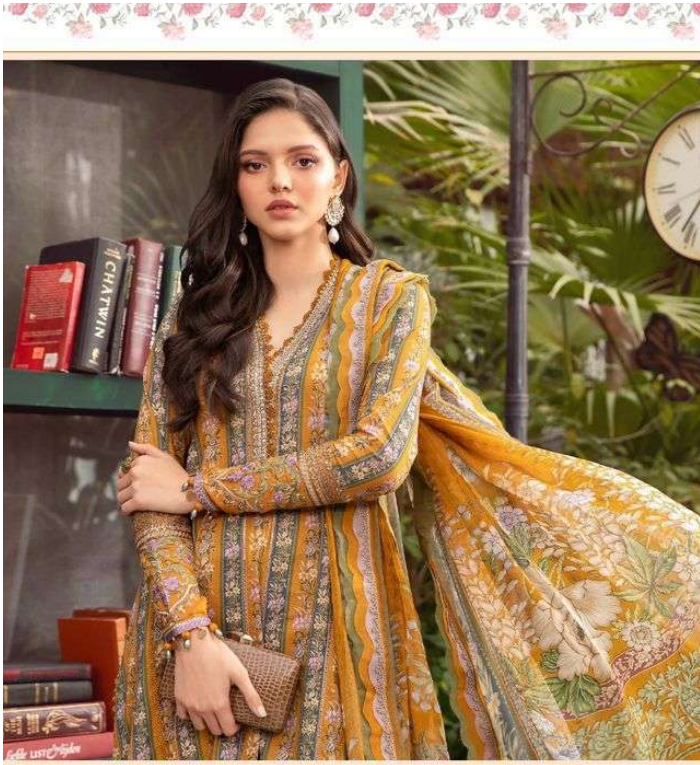
3514



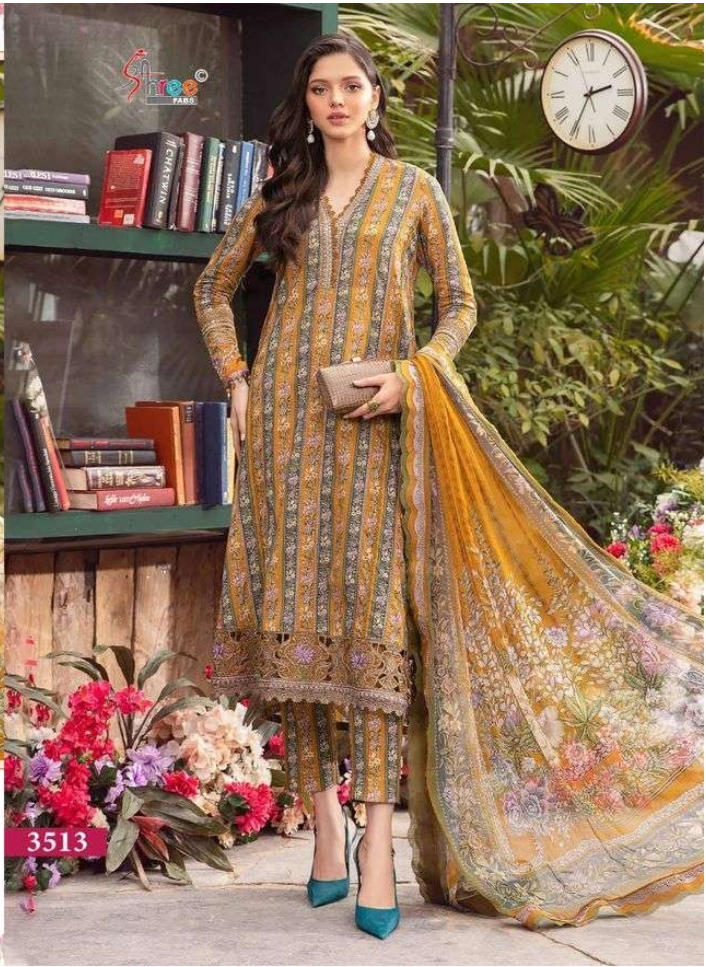


MARIYA B  PRINT
VOL-16

3515



MARIYA B  PRINT
VOL-16



3513



Shree
F&B



MARIYA B  PRINT
VOL-16





MARIYA B  PRINT
VOL-16

