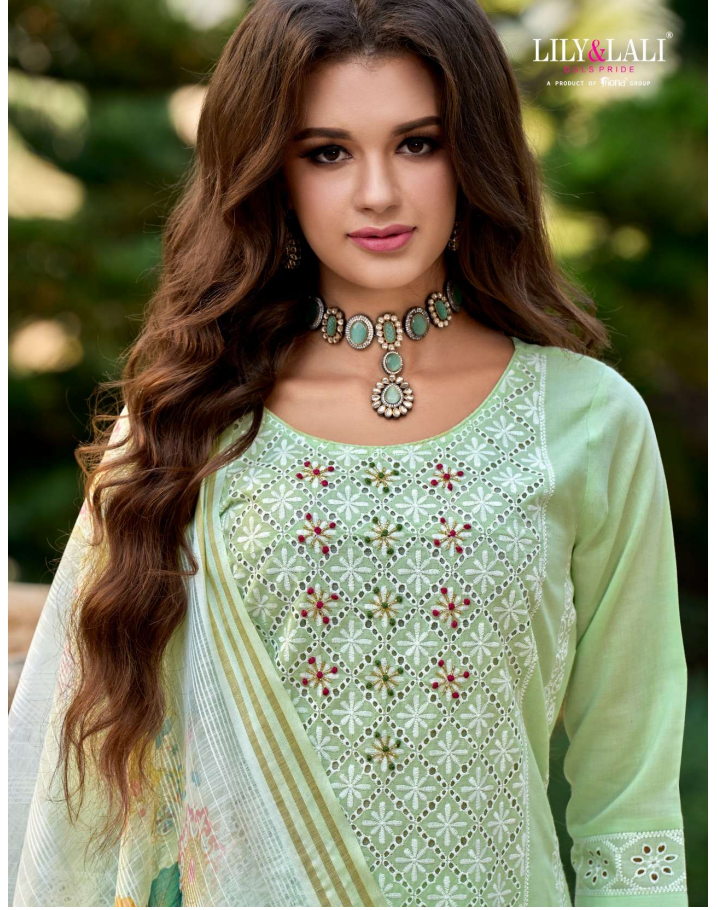


LILY & LALI<sup>®</sup>  
SULS PRIDE  
A PRODUCT OF FORTIS GROUP



COTTON  
*Carnival*





16805







LILY & LALI<sup>®</sup>  
GIRLS PRIDE  
A PRODUCT OF FORDA GROUP

THE NEXT GENERATION *Muse*





LILY&LALI<sup>®</sup>  
SULS PRIDE  
A PRODUCT OF FORTIS GROUP



COTTON  
*Carnival*

LILY & LALI®  
GULS PRIDE  
A PRODUCT OF HOND GROUP

GLOMOURS BEAUTY









THE LIFE OF THE *Queen*







THE MODERN *Enchantress*













LILY & LALI<sup>®</sup>  
GÜLŞAHİDE  
A PRODUCT OF FICHTI GROUP





LILY&LALI®  
GULS PRIDE  
A PRODUCT OF *friona* GROUP

COTTON  
*Carnival*

### FABRICS DETAILS

: TOP :

BORED WHITE SCHIFFLI WORK AND HANDWORK  
ON CAMBRIC COTTON WITH COTTON LINING

: BOTTOM :

PURE VISCOUSE PANT WITH LACE AND  
STICHING'S PATTERN

: DUPATTA :

MUL COTTON PRINT DUPATTA (36") WITH  
LACE AND TUSSLE

SIZE : M,L,XL,XXL,3XL

NOTE : POCKET IN SIDE THE PANT



@LILY&LALI2023





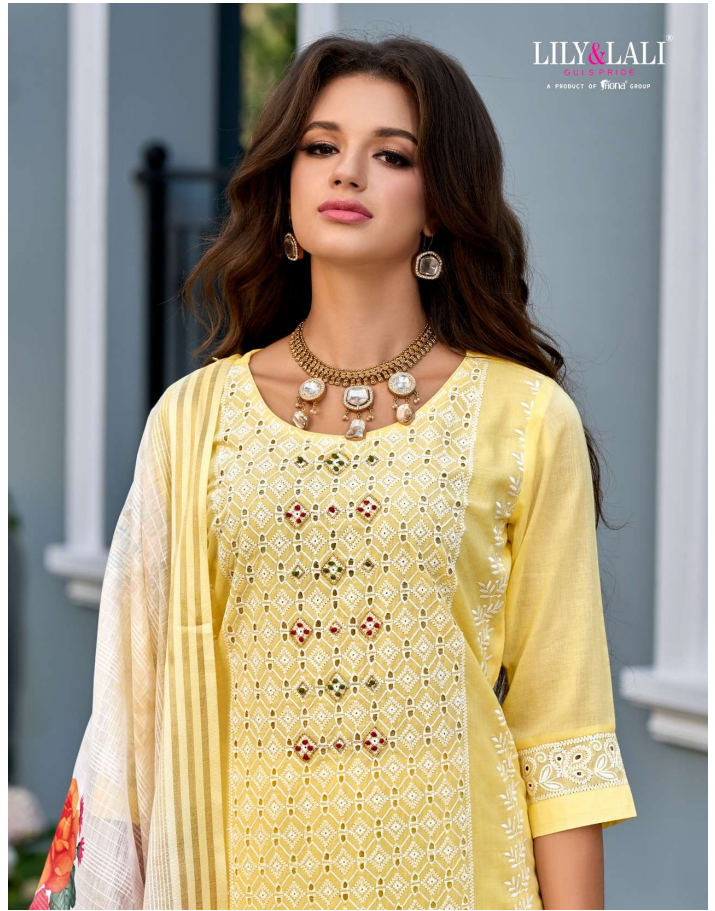








LILY & LALI<sup>®</sup>  
A PRODUCT OF SICKLE GROUP





LILY&LALI®  
GULS PRIDE  
A PRODUCT OF **WONA** GROUP

COTTON  
*Carnival*



16801



16802



16803



16804



16805



16806



LILY & LALI<sup>®</sup>

GULS PRIDE  
A PRODUCT OF THE LALI GROUP

THE LIFE OF THE *Queen*



**SOLD OUT**

LILY & LALI<sup>®</sup>

GULS PRIDE

PRODUCT OF Triona GROUP

COTTON

*Carnival*

**SOLD  
OUT**

🙏 THANKS FOR YOUR SUPPORT 🙏

OUT OF STOCK  
RELAUNCHING SOON...