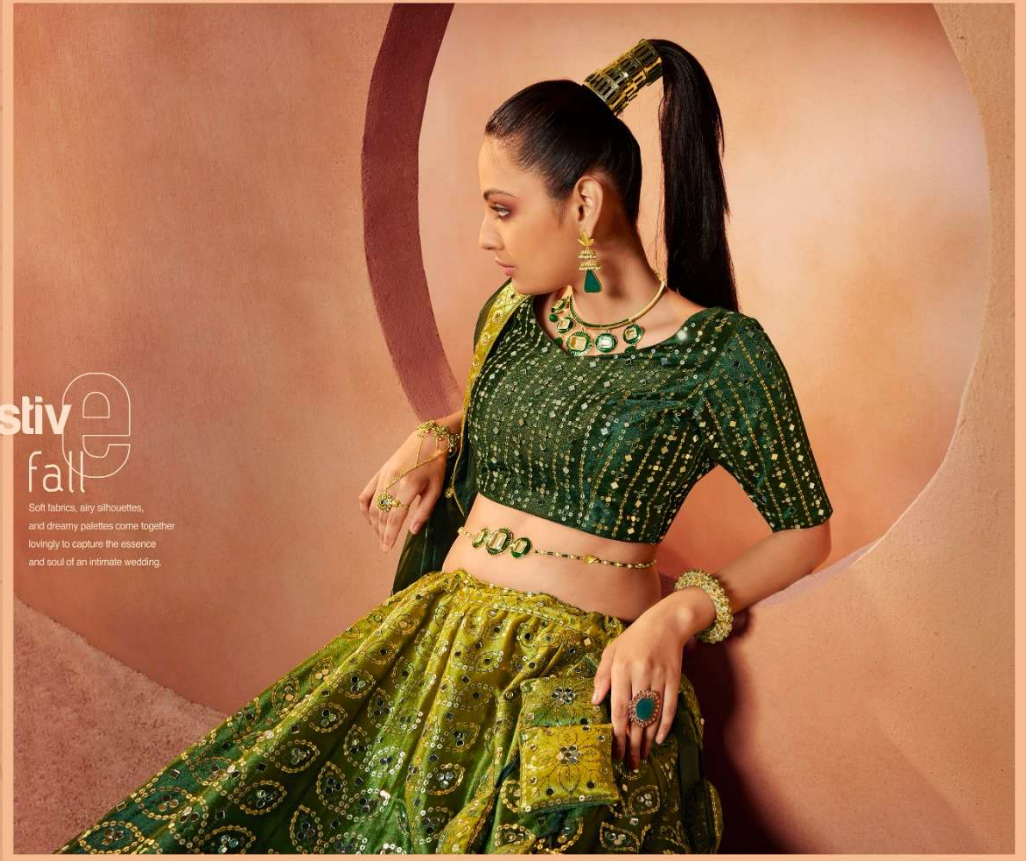


 bhkala

Festive fall

Soft fabrics, airy silhouettes,
and dreamy palettes come together
lovingly to capture the essence
and soul of an intimate wedding.



bhkalā

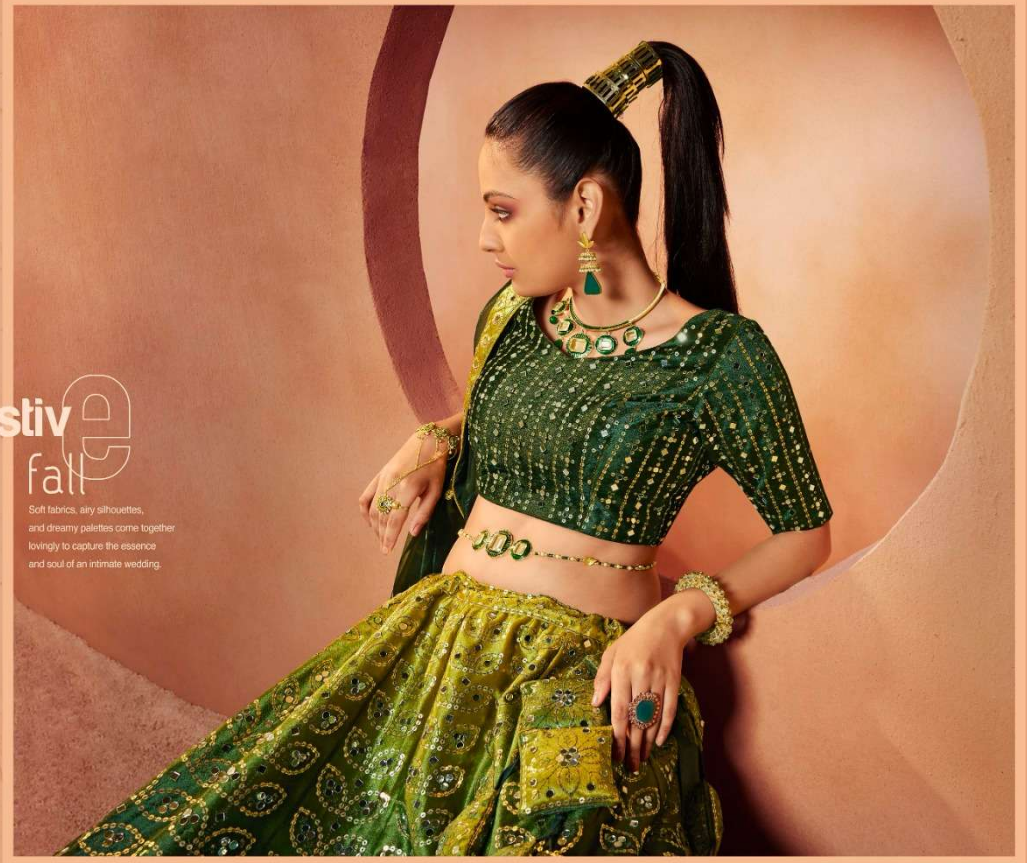


Bride & maid
VOL-29

 bhkala

Festive fall

Soft fabrics, airy silhouettes,
and dreamy palettes come together
lovingly to capture the essence
and soul of an intimate wedding.



bhkala

Style e decoded

This season, take inspiration from all the hues that embody the spirit of celebrations—from cool blues and greens to lush pinks and reds.

2281





bhkala

Style decoded

The season, take inspiration from all the hues that embody the spirit of celebrations—from cool blues and greens to lush pinks and reds.
2281

bhkala



Style decoded

This season, take inspiration from all the hues that embody the spirit of celebrations—from cool blues and greens to lush pinks and reds.

2281







bhkala

Soothing Feel

Classy, subtle and totally regal, lush pink is the colour that perfectly complements the new Indian bride, who oozes oodles of exuberance.

2282

Beautiful blend

A design that
promises new-age glam with
just the right amount of bling!
2284



ModerN classics

In classic hues,
Opulent silhouettes,
And decadent spirit,
Transform yourself into
the timeless bride.
2283



ModerN classics

In classic hues,
Opulent silhouettes,
And decadent spirit,
Transform yourself into
the timeless bride.

2283



bhkala



bhkala

Royal Romance

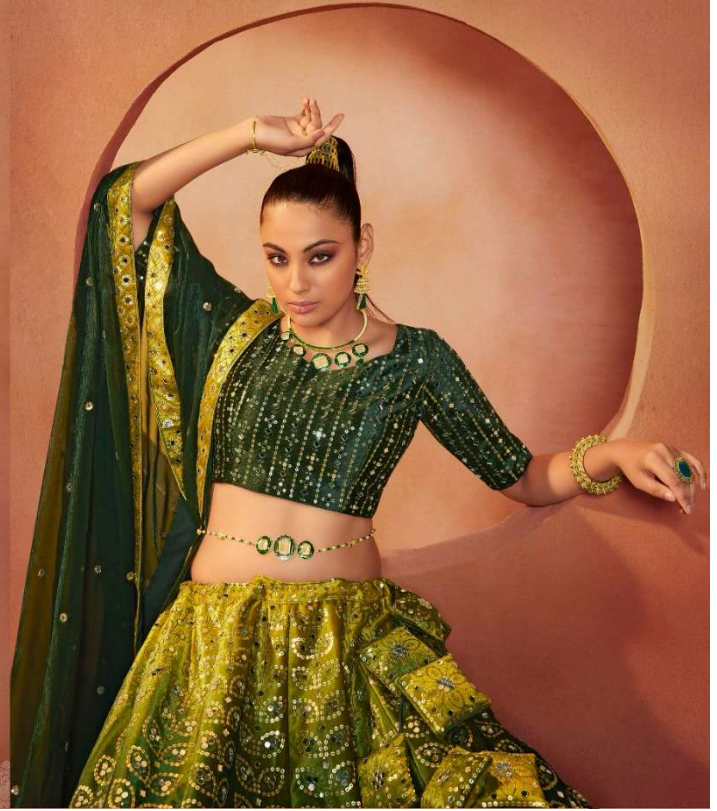
Every woman in this world wears a little sparkle, some in their dress, and some in their eyes. This dreamy lehenga is embellished with beautiful work.

2285



Beautiful blend

A design that
promises new-age glam with
just the right amount of bling!
2284





2281



2282



2283



2284



2285

Shikha

Bride & maid
VOL-29



Roy Romance

Every woman in this world wears a little sparkle, some in their dress, and some in their eyes. This dreamy lehenga is embellished with beautiful work.
2285



bhkala



Bride & Maid

VOL-29

Design NO. (SKU)	Main Color	Lehenga Fabric	Choli Fabric	Dupatta Fabric	Size (Semi-Stitched)	Lehenga Work	Choli Work	Dupatta Work	Choli Length MTR	Lehenga Length MTR	Dupatta Length MTR	Weight
2281	Dusty Pink	Velvet	Velvet	Georgette	UPTO 42 BUST AND WAIST	Sequince Embroidered With All Over Mirror Work	Sequince Embroidered With All Over Mirror Work	Sequince Embroidered With All Over Mirror Work	0.80 MTR	42 INCH	2.40 MTR	2.5 KG
2282	Magenta	Velvet	Velvet	Art Silk	UPTO 42 BUST AND WAIST	Sequince Embroidered With All Over Mirror Work	Sequince Embroidered With All Over Mirror Work	Sequince Embroidered With All Over Mirror Work	0.80 MTR	42 INCH	2.30 MTR	2.5 KG
2283	Teal Blue	Velvet	Velvet	Georgette	UPTO 42 BUST AND WAIST	Sequince Embroidered With All Over Mirror Work	Sequince Embroidered With All Over Mirror Work	Sequince Embroidered With All Over Mirror Work	0.80 MTR	42 INCH	2.40 MTR	2.5 KG
2284	Green	Velvet	Velvet	Art Silk	UPTO 42 BUST AND WAIST	Sequince Embroidered With All Over Mirror Work	Sequince Embroidered With All Over Mirror Work	Sequince Embroidered With All Over Mirror Work	0.80 MTR	42 INCH	2.40 MTR	2.5 KG
2285	Purple	Velvet	Velvet	Art Silk	UPTO 42 BUST AND WAIST	Sequince Embroidered With All Over Mirror Work	Sequince Embroidered With All Over Mirror Work	Sequince Embroidered With All Over Mirror Work	0.80 MTR	42 INCH	2.40 MTR	2.5 KG

THIS BOOK / CATALOGUE / LOGO / ARE PROTECTED UNDER COPYRIGHT ACT.
 AN INLEGAL/UNAUTHORIZED REPRINT, PUBLISHING, REPRODUCTION, DISTRIBUTION AND MODIFICATION OF ANY IMAGES, PHOTOGRAPHS AND PRODUCTS,
 TOTALLY OR IN PART, FOR ANY PURPOSE, REASON OR CAUSE IS STRICTLY PROHIBITED AND PUNISHABLE UNDER LAW.