

A woman is shown from the chest up, wearing a vibrant yellow lace dress. The dress features intricate floral embroidery in red, green, and blue along the front placket and on the sleeves. She is adorned with large, ornate silver earrings, multiple silver bangles on her right wrist, and a ring on her finger. Her right hand is raised near her face. The background is dark and out of focus.

Romani[®]
classic collection

SABEENA

VOL-02



A woman is shown from the chest up, wearing a vibrant yellow lace dress. The dress features intricate floral embroidery in red, green, and blue along the front placket and on the sleeves. She is adorned with large, ornate silver earrings, multiple silver bangles on her right wrist, and a ring on her finger. Her hand is raised near her face, and she has a soft, contemplative expression. The background is dark and out of focus.

Romani[®]
classic collection

SABEENA

VOL-02



Romani®
CLASSIC COLLECTION



SABEENA

VOL-02

THE ETHNIC ELEMENTS OF INDIAN FASHION FROM ULTIMATE
MOTHER'S COLOURS.



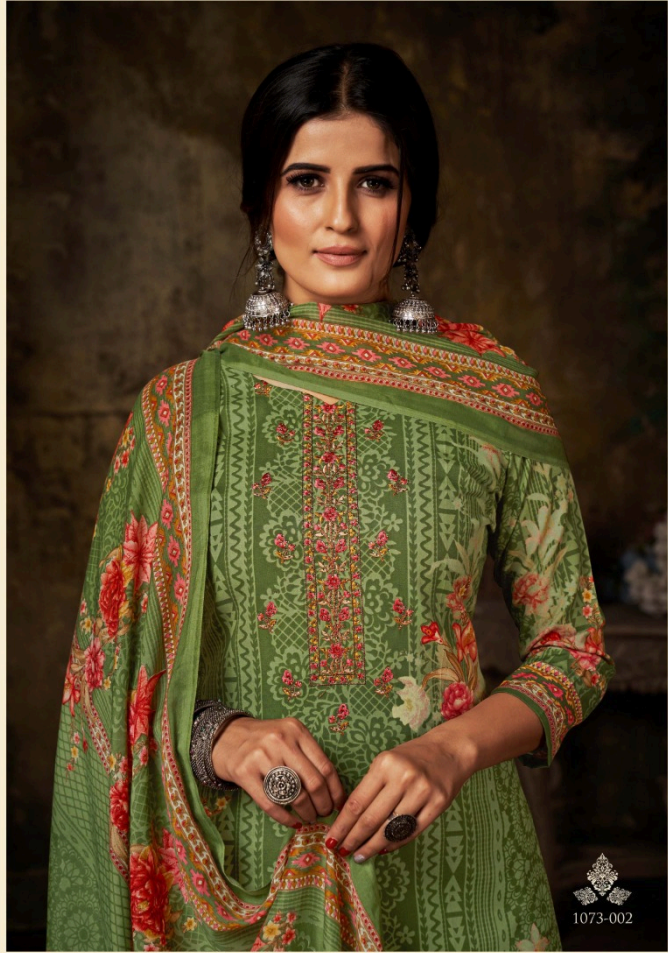
SABEENA

VOL. 02
THE ETHNIC ELEMENTS OF INDIAN FASHION FROM HERITAGE
MOTIFS & COLOURS



1073-001







SABEENA

V O L - 0 2

THE ETHNIC ELEMENTS OF PAKISTANI FASHION FROM ULTIMATE
WORLD CLOSET



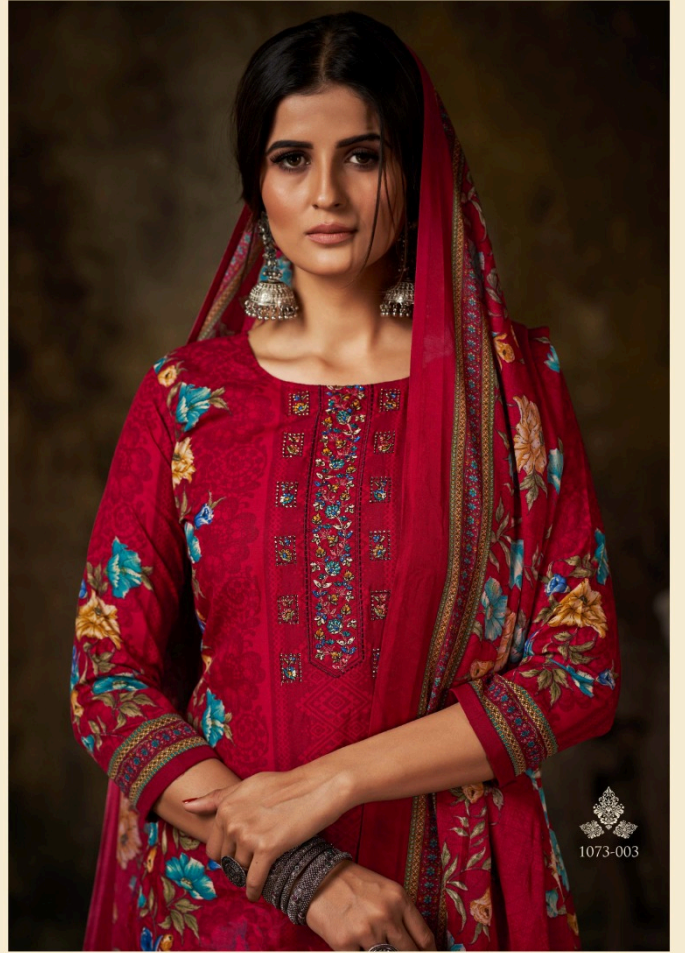
1073-006





SABEENA

VOL-02
THE ETHNIC ELEMENTS OF INDIAN FASHION FROM ULTIMATE
MULTI-COLORS



Romani®
classic collection



SABEENA

VOL-02

THE ETHNIC ELEMENTS OF INDIAN FASHION FROM ULTIMATE
MOTHER COLOURS.

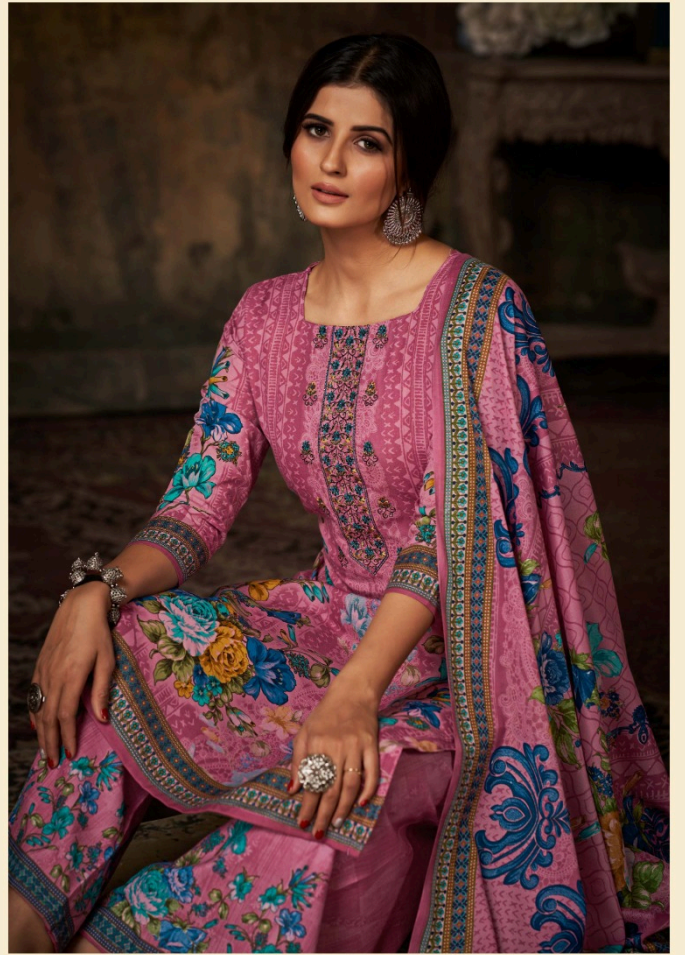


SABEENA

VOL-02
THE ETHNIC ELEMENTS OF PAKISTANI FASHION FROM URBAN
MOTIFS & COLOURS



1073-007



SABEENA

VOL-02
THE ETHNIC ELEMENTS OF INDIAN FASHION FROM UTTAR
PRADESH



1073-008





SABEENA

VOL. 02
THE ETHNIC ELEGANCE OF INDIAN FASHION FROM ULTIMATE
MOTIF & COLOURS.



1073-009





1073-001



1073-002



1073-003



1073-004



1073-005



1073-006



1073-007



1073-008



1073-009



1073-010



 ROMANI®

 CLASSIC COLLECTION

 SABEENA

 VOL-02