



SIZE - XL
READYMAD
#R-1020-A



TOP- ORGENZA WORK WITH EMBROIDERY
BOTTOM- SILK STICHED
DUPATTA - ORGENZA WORK WITH EMBROIDERY

- Ⓟ DRY CLEAN ONLY.
- ⊗ DO NOT USE ANY BLEACH OR STAIN REMOVING CHEMICAL.
- ☎ IRON THE FABRIC AT MODERATE TEMPERATURE.



SIZE - XL
READYMAD
#R-1020-A



TOP- ORGENZA WORK WITH EMBROIDERY
BOTTOM- SILK STICHED
DUPATTA - ORGENZA WORK WITH EMBROIDERY

- Ⓟ DRY CLEAN ONLY.
- ⓧ DO NOT USE ANY BLEACH OR STAIN REMOVING CHEMICAL.
- ☎ IRON THE FABRIC AT MODERATE TEMPERATURE.



SIZE - XL
READYMAD
#R-1020-B



TOP- ORGENZA WORK WITH EMBROIDERY
BOTTOM- SILK STICHED
DUPATTA - ORGENZA WORK WITH EMBROIDERY

- Ⓟ DRY CLEAN ONLY.
- ⓧ DO NOT USE ANY BLEACH OR STAIN REMOVING CHEMICAL.
- ☎ IRON THE FABRIC AT MODERATE TEMPERATURE.





SIZE - XL
READYMAD
#R-1020-C



TOP- ORGENZA WORK WITH EMBROIDERY
BOTTOM- SILK STICHED
DUPATTA - ORGENZA WORK WITH EMBROIDERY

- Ⓟ DRY CLEAN ONLY.
- ⓧ DO NOT USE ANY BLEACH OR STAIN REMOVING CHEMICAL.
- ☎ IRON THE FABRIC AT MODERATE TEMPERATURE.





SIZE - XL
READYMAD
#R-1020-D

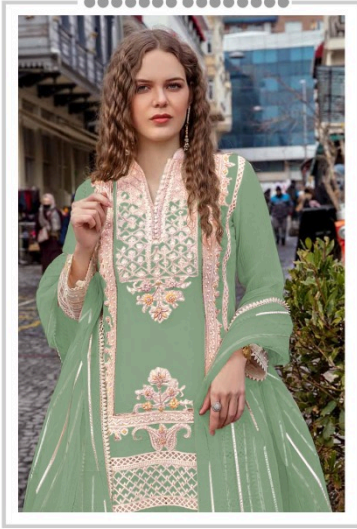


TOP- ORGENZA WORK WITH EMBROIDERY
BOTTOM- SILK STICHED
DUPATTA - ORGENZA WORK WITH EMBROIDERY

- Ⓟ DRY CLEAN ONLY.
- ⓧ DO NOT USE ANY BLEACH OR STAIN REMOVING CHEMICAL.
- ☎ IRON THE FABRIC AT MODERATE TEMPERATURE.



Ramsha[®]
1020-NX



SIZE - XL
READYMAD

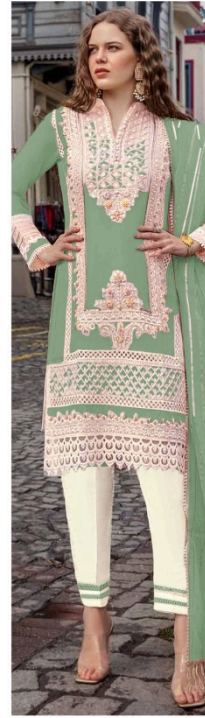
Ramsha[®]
1020-NX



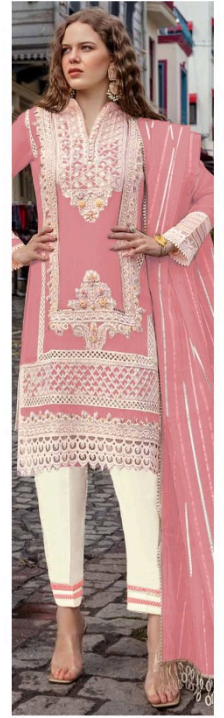
#R-1020-A



#R-1020-B



#R-1020-C



#R-1020-D



TOP - ORGANDA WITH EMBROIDERY
BOTTOM - SEA FUCHSIA
DRESSES - ORGANDA WITH EMBROIDERY

• AVAILABLE ONLY
IN NEW YORK, NEW JERSEY
AND PHILADELPHIA



Ramsha
SIZE - XL
READYMADE
RR-1020-C

Handmade with the embroidery
with the embroidery
with the embroidery

Handmade with the embroidery
with the embroidery
with the embroidery





Ramska
SIZE - XL
READYMADE
#R-1020-A

100% POLYESTER WITH EMBROIDERY
100% COTTON WITH EMBROIDERY
100% COTTON WITH EMBROIDERY

100% POLYESTER WITH EMBROIDERY
100% COTTON WITH EMBROIDERY
100% COTTON WITH EMBROIDERY