

 *Zulfat*<sup>®</sup>  
Designer Suits

# RAABIA







THE WORLDCHARMER | 522-008

EVERY THREAD HAS BEEN CHOSEN WITH IMMACULATE CARE. THE GREATEST  
PRECISION WAS ENGAGED WHILE CRAFTING A DESIGN WHICH YOU WOULD  
LIKE TO WEAR. BECAUSE, A SILKWAY DESIGNED TO ENHANCE YOUR BEAUTY.

 **Zulfat**<sup>®</sup>  
DESIGNER SAREES





HER GIFT FROM NO BOUNDARIES, HER ELEGANCE FROM NO LIMITS, HER  
CHARM IS A BLEND OF INSPIRATION AND MOVEMENT ACROSS THE WORLD.  
LOOKING SIMPLY BEAUTIFUL IN HER MATCHLESS STYLE, SHE REELS THE WORLD.

FACE OF THE YEAR | 522-007





 *Zulfat*<sup>®</sup>  
Designer Suits

# RAABIA

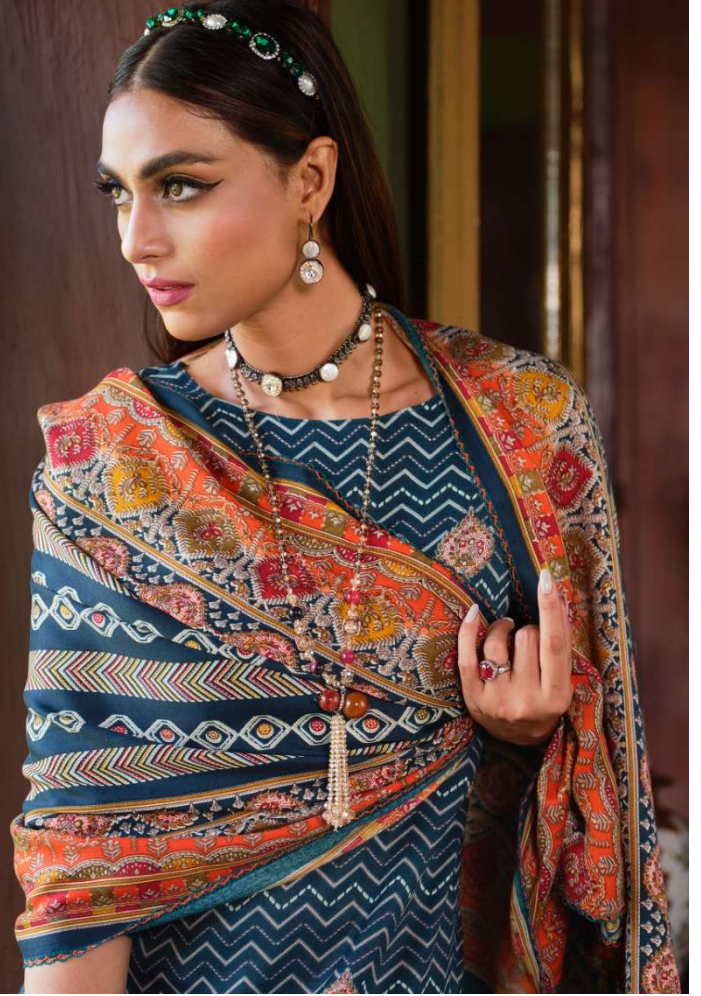




 **Zulfat**<sup>®</sup>  
DESIGNER SAREE

V I S A G E   O F   E N A M O U R

The boliness of your affection the power of your love that makes you so different that makes you so unique.  
A delightful experience.



**Zulfat**  
DESIGNER



THE WORLDCHARMER | 522-001

EACH THREAD HAS BEEN CHOSEN WITH Meticulous CARE. THE GREATEST PRECISION HAS ENGAGED WHEN CRAFTING A DESIGN WHICH YOU WOULD LOVE UP TO HER BOUNDED. A SILK AND COTTON TO ENHANCE HER BEAUTY.

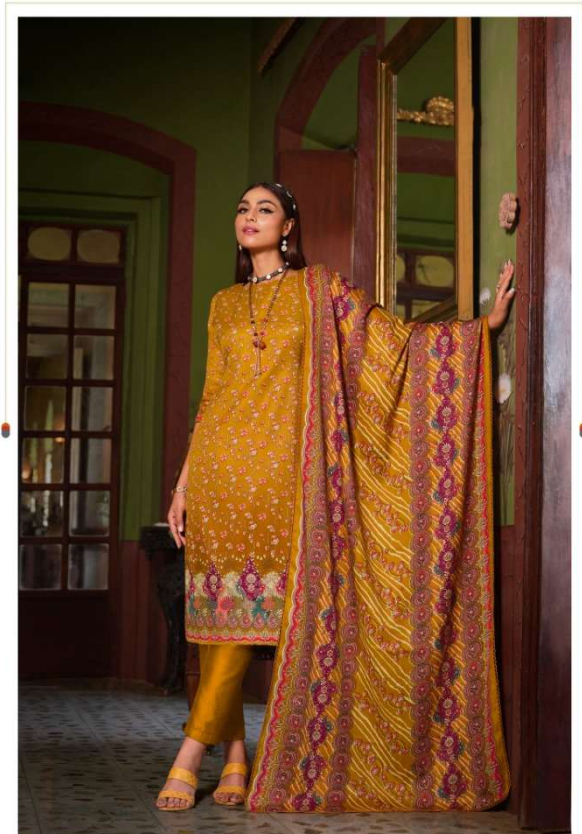




EETERNAL MAGIC | 522-003

NAVY CLEAN TO UNDERSTAND FASHION, BUT ONLY A FEW  
THESE DESIGNERS HAVE THE VISION FOR NOTHING  
BUT SPAN DIVERSITY ACROSS ALL THE MEDIA NO MOTHER  
THEY HAVE ONLY THE GREATEST INSPIRATION FROM THE  
WISDOM OF ETHIC WORK ON MAKING HER LIVING  
REACTING, THIS IS ONE SUCH QUESTION FROM ONE





THE MAGNUM OPUS | 522-002

HER ENCHISING FACE HAS BEEN SELECTED TO ADORN THE COVER PAGE OF  
COURTESY MAGAZINE PUBLISHED AROUND THE WORLD EVERY CANON  
CARRIES MANY FANFANTASIES WITH HER, ACROSS THE WORLD HER BECOMES A







ETERNAL MAGIC | 522-004

MANY CLAIM TO UNDERSTAND FASHION, BUT ONLY A FEW UNDERSTAND STYLE. AND SHE SETTLES FOR NOTHING BUT WORLDCLASS FABRICS AT ALL TIMES. NO WONDER THEN THAT ONLY THE GREATEST MASTERED FROM THE SCHOOL OF STYLE WISH ON MARRIAGE HER LUCKING BRIGHTENING. THIS IS ONE SLEEK CREATION FROM THE



 **Zulfat**<sup>®</sup>  
Pakistan

ETERNAL MAGIC | 522-004

WANT TO CLAIM TO UNDERSTAND FASHION, BUT ONLY A FEW  
UNDERSTAND STYLE. AND SHE SETSLES FOR NOTHING  
BUT THE MOST DELICIOUS FABRICS IN ALL. THESE MACHINES  
THEN THAT ONLY THE GREATEST MASTERS FROM THE  
MIDDLE EAST, WITH A BUNCH OF MACHINES, THE CLOTHING  
BREAKTHROUGH. THIS IS ONE SUCH CREATION FROM ONE







HER GRACE HAS NO BOUNDARIES. HER ELEGANCE KNOWS NO LIMITS. HER CHARM IS A SOURCE OF INSPIRATION AND MOVEMENT ACROSS THE WORLD. LOOKING SIMPLY STUN IN HER MATCHLESS ATTIRE, SHE RULES THE WORLD.

FASHION SAGA | 522-005



Zulfat®  
Designed with passion



522-001



522-002



522-003



522-004



522-005



522-006



522-007



522-008



Zulfat®



THE MAGNUM OPUS | 522-006

HER PHOTOGRAPHIC FACE HAS BEEN SELECTED TO ADORN THE COVER PAGE OF COUNTLESS FASHION MAGAZINES AROUND THE WORLD. EVERY CAMERA CAPTURES MANY MOMENTS WITH HER ACROSS THE WORLD. HER BEHAVIOR IS

TOP

100% PURE PREMIUM WOOLLEN PASHMINA. (2.50 MTR APX)

DUPATTA

100% PURE PREMIUM WOOLLEN PASHMINA SHAWL. (2.30 MTR APX)

BOTTOM

100% PURE PASHMINA SPUN. (3 MTR APX)



[WWW.ZULFAT.IN](http://WWW.ZULFAT.IN)

FOLLOW US ON



THIS BOOK / CATALOGUE / LOGO / ARE PROTECTED UNDER COPYRIGHT ACT.  
AN ILLEGAL / UNAUTHORIZED REPRINT, PUBLISHING, REPRODUCTION, DISTRIBUTION AND MODIFICATION OF ANY IMAGES, PHOTOGRAPHS AND PRODUCTS,  
TOTALLY OR IN PART, FOR ANY PURPOSE, REASON OR CAUSE IS STRICTLY PROHIBITED AND PUNISHABLE UNDER LAW.