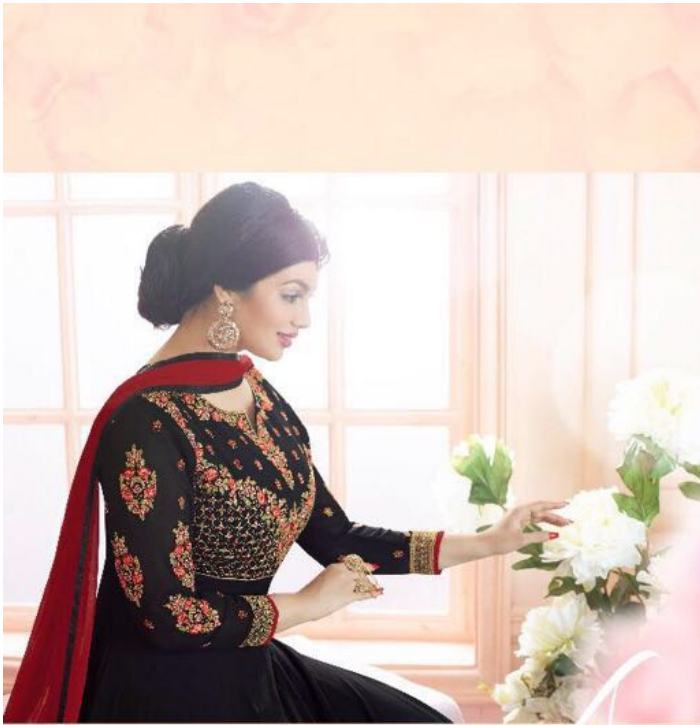




# MASAKALI

BY AYESHA



Styles change. Fads come and go.  
Trends are volatile and unpredictable.  
But true fashion is eternal. Such is  
engraved on the tree of eternity deep  
within the Garden of Magic.

1004



Shree®  
FABS



Shree®  
FABLS

*Beauty*

You are the prize of all  
the lands. Your  
threads represent  
your beauty the same  
beauty prizes of all  
the kingdoms vie for.



1003



When your Dress has been designed with the most intricate precision by the most gifted artists, what do we call you but a masterpiece?



The sparkling glitter of innocence is best exemplified through these designs.  
Be the queen of virtue you were destined to be.

1003





Of all the things in  
heaven and earth that  
man holds close to his  
heart, when you look  
as you do in these  
threads, he holds  
nothing dearer. He  
above the rest.



By dressing with such splendor, you tell the world that your tastes are immaculate and miles ahead of your contemporaries. A true monarch of style.

-1001



You stop to wonder  
what they're  
celebrating. Which is  
when you realize that  
you are the occasion.

1005



1001

Shree  
FAB



1003



1002



1004

MASAKALI  
BY AYESHA



1005





Styles change. Fads come and go.  
Trends are volatile and unpredictable.  
But true fashion is eternal. Such is  
engraved on the tree of eternity deep  
within the Garden of Magic.

1004

