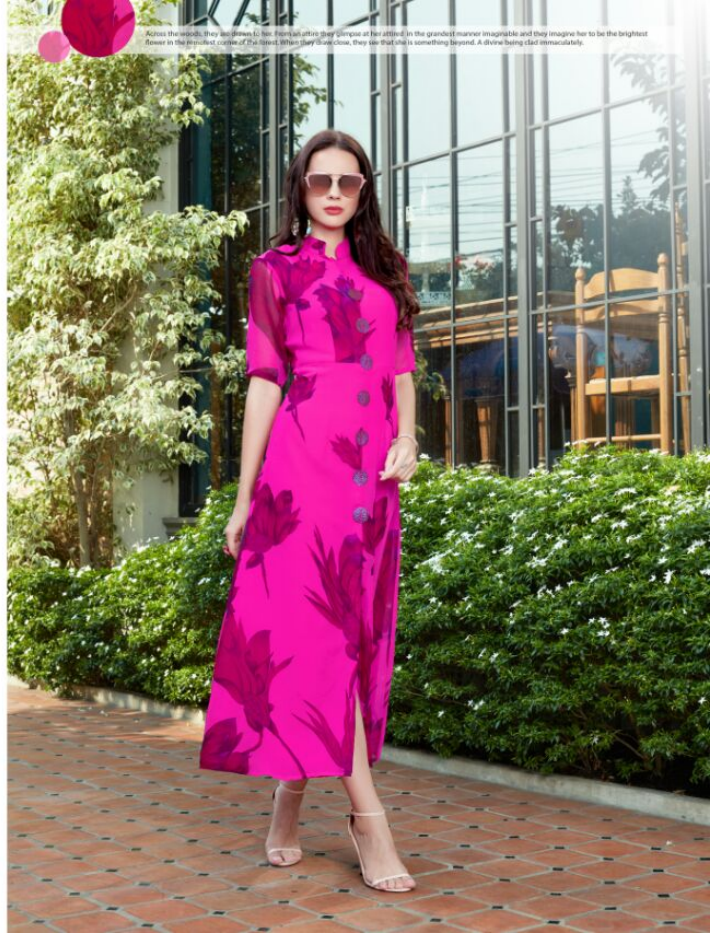


MUGDHA®



Florina





503



504



501



502

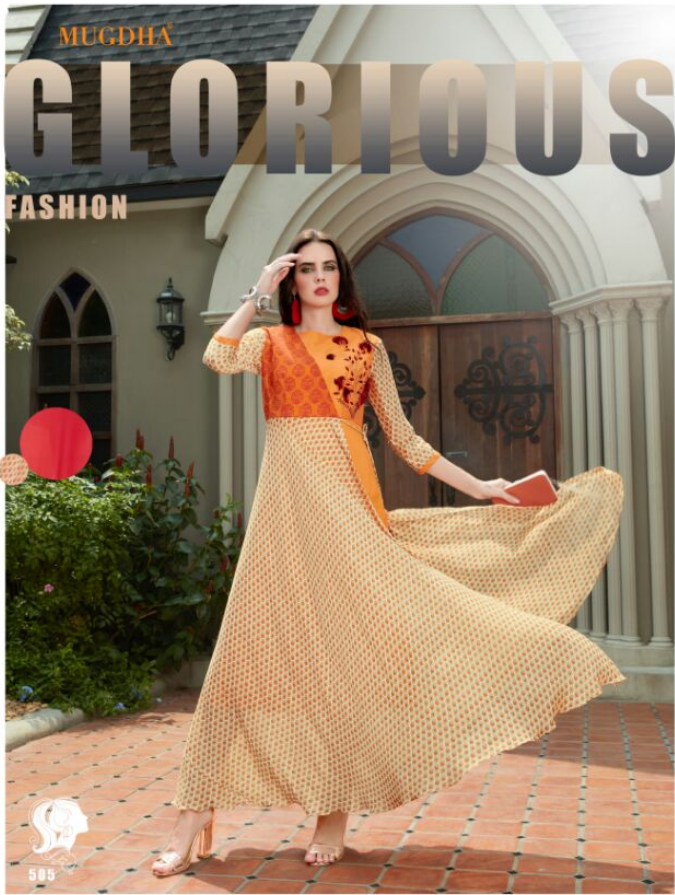


505



506







**M
E
J
E
S
T
I
C
F
A
S
H
I
O
N**



Across the woods, they are drawn to her. From an attic they glimpse at her attitude in the grandest manner imaginable and they imagine her to be the brightest flower in the remotest corner of the forest. When they draw close, they see that she is something beyond. A flower being called immaculately.





MUGDHA®

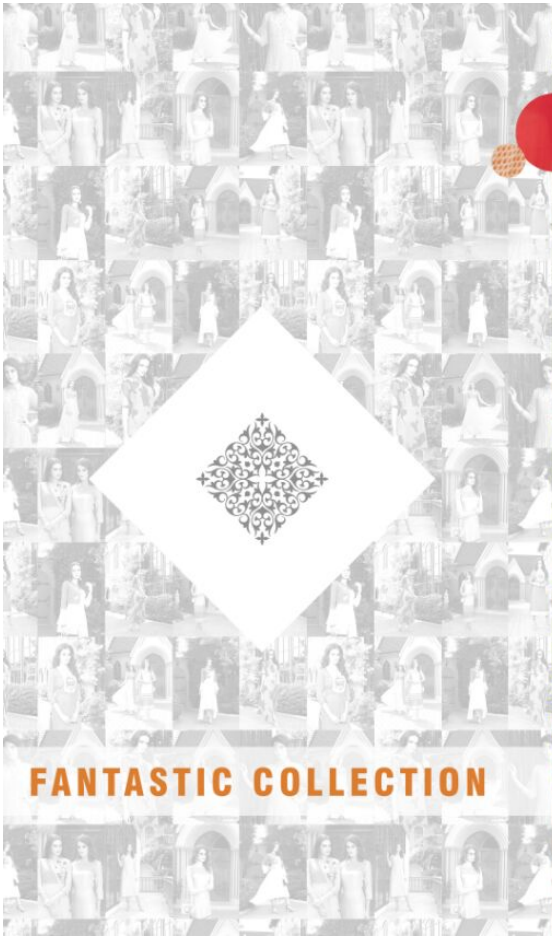
ELEGANCE LOOK

This applies to other fabrics as well. The garment needs to breathe, otherwise mould could form or oxidation may cause a light-coloured fabric to turn yellow. The plastic cover provided by the dry cleaner is just to protect the piece during transportation. At home, use a cotton bag or acid-free paper to cover the garment to protect it from dust.



Linen is a natural fiber, made from the flax plant. Check care labels on items to determine whether the garment must be dry-cleaned. If machine-washable, wash according to label instructions, using water appropriate to the garment's color. Linen absorbs more water during the washing process than other fibers.

502



FANTASTIC COLLECTION



If you are hand washing the piece, do not wring or twist it. Silk becomes weaker when it is wet and might tear if you are too rough with it. Instead, after washing, blot and dab with a towel and lay it out flat to dry. Hanging it up will stretch the fabric.



MUGDHA Florina

DESIGN NO.	DESCRIPTION	WORK DETAIL	USP	RATE
501	KURTI - PRINTED CHIFFON FABRIC	APPLIQUE BUTTON	MESMERIZING COLOR , CUT PATTERN, SEMI SANTOON INNER, STITCHED KURTI	599
502	CHIFFON MOTHDA PRINT, BROCADE	EMBRIODERY RESHAM WORK	NECK BORDER PATTERN STRIGHT KURTI, INNER SANTOON, FULLY STITCHED	599
503	CHIFFON PRINTED FABRIC, TWO TONNED SILK FABRIC	RESHAM, JARI EMBROIDERY WORK	APPLE CUT, SIDE PLITED PATTERN ON NECK, BELL SLEVES PATTERN, SANTTON INNER, FULLY STITCHED	599
504	RANGOLI FABRIC WITH PRINT, BANGLORI SILK FABRICK IN YOKE, RUSSEL NET BORDER	CHAIN STITCH EMBROIDERY WORK WITH APPLIQUE HAND TOUCH ON IT, RUSSEL NET BORDER	BEAUTIFUL NECK WORK WITH BORDER AND PRINT COMBINATION, INNER SANTOON, FULLY STITCHED	599
505	RANGOLI FABRIC WITH PRINT, GEORGETTE, CHANDERI WITH EMBROIDERY WORK	RESHAM AND ZARI EMBROIDERY WORK WITH TAZZEL, OTHER SIDE EMBRIODERY WORK ON CHANDERI	LONG FLARE ANGRAKHA STYLE KURTI WITH WORK ON BOTH SIDE, INNER SANTOON, FULLY STITCHED	599
506	CHEQUES CHIFFON PRINT FABRIC	RESHAM WORK	COLLAR PATTERN, FRONT WORK BUTTA ON BOTH SIDE, WITH SLEEVES FOLDABLE HOOK	599

FULL SET AMOUNT : 3594/-
 NUMBER OF PIECES : 6
 AVERAGE PRICE : 599/-
 FULLY STITCHED WITH INNER SIZE 40 AND 42

LOOK LIKE A
PRETTY



