

A woman with long, wavy brown hair is wearing a light green, heavily embroidered outfit with gold and red details. She is looking slightly to the right. The background is a warm, reddish-brown wall with a chandelier visible on the left.

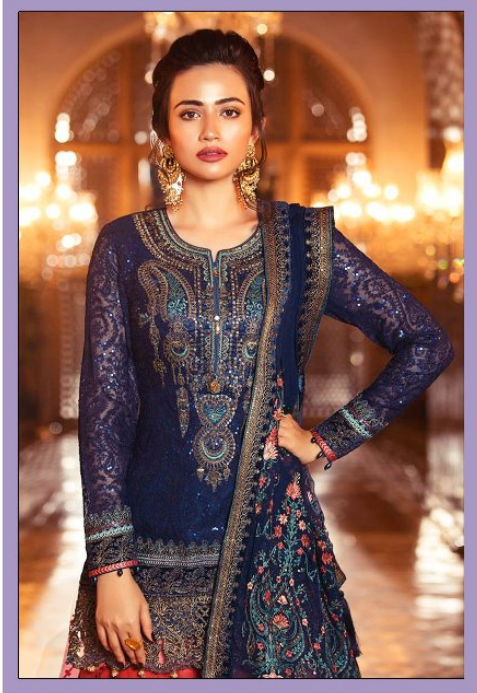
**EMBROIDERED
MARIYA.B.**
VOL-4

02

23 of 25



02



MBROIDERED
MARIYA.B.
Vol-4

1132

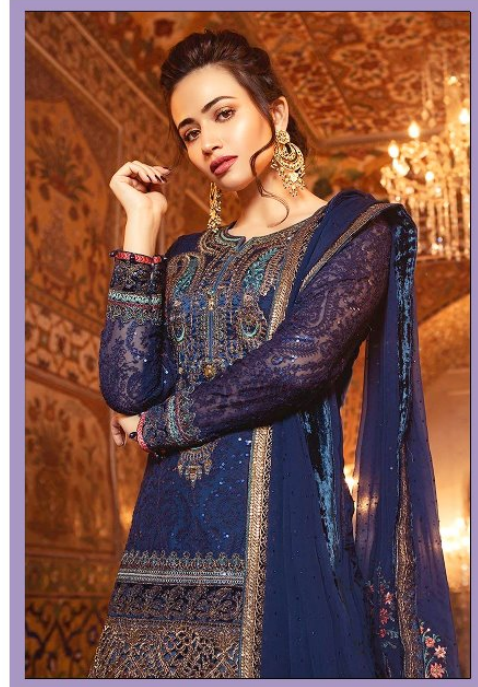




**EMBROIDERED
MARIYA.B.**
VOL-4

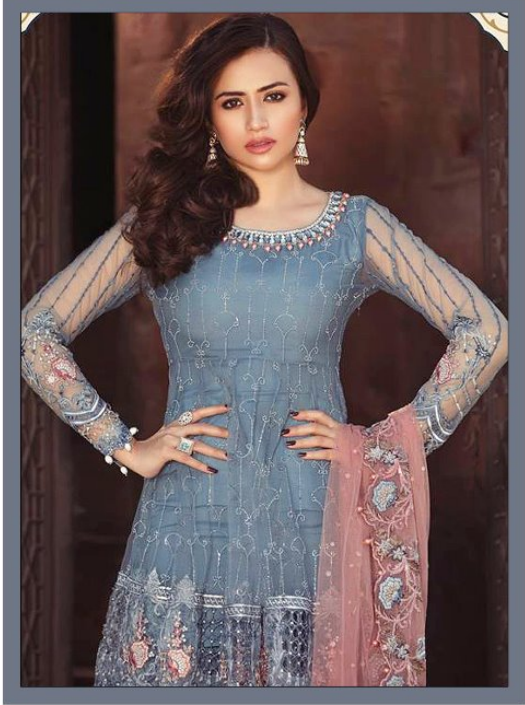
1133





1132

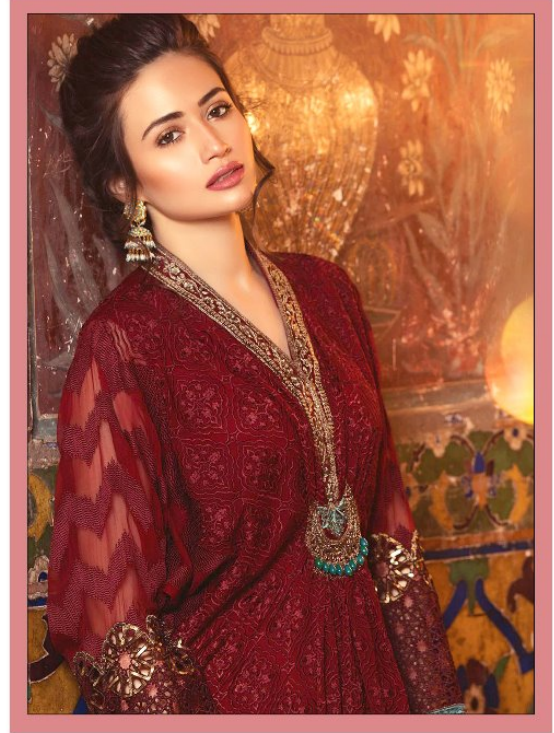
MBROIDERED
MARIYA.B.
Vol-4



**MBROIDERED
MARIYA.B.**
Vol-1

1133





**EMBROIDERED
MARIYA.B.**
Vol-4

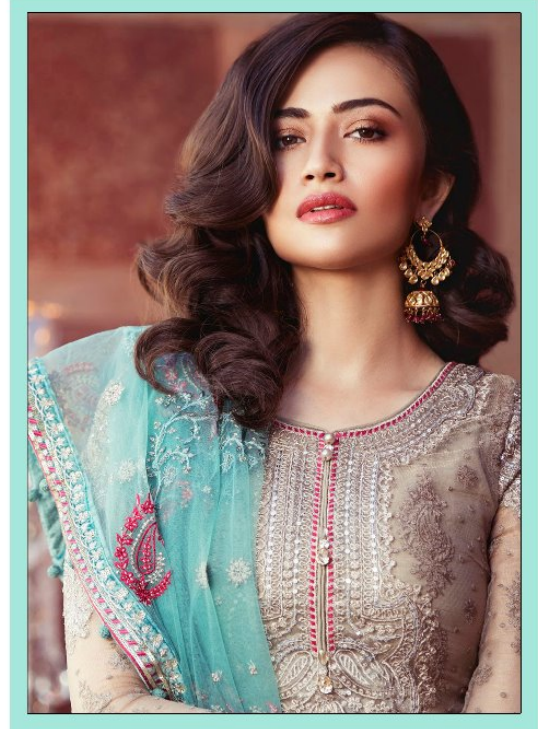
1134



**EMBROIDERED
MARIYA.B.**
VOL-1

1136





**EMBROIDERED
MARIYA.B.**
VOL-4

1136



**MBROIDERED
MARIYA.B.**
Vol-4



**EMBROIDERED
MARIYA.B.**
Vol-1

1137

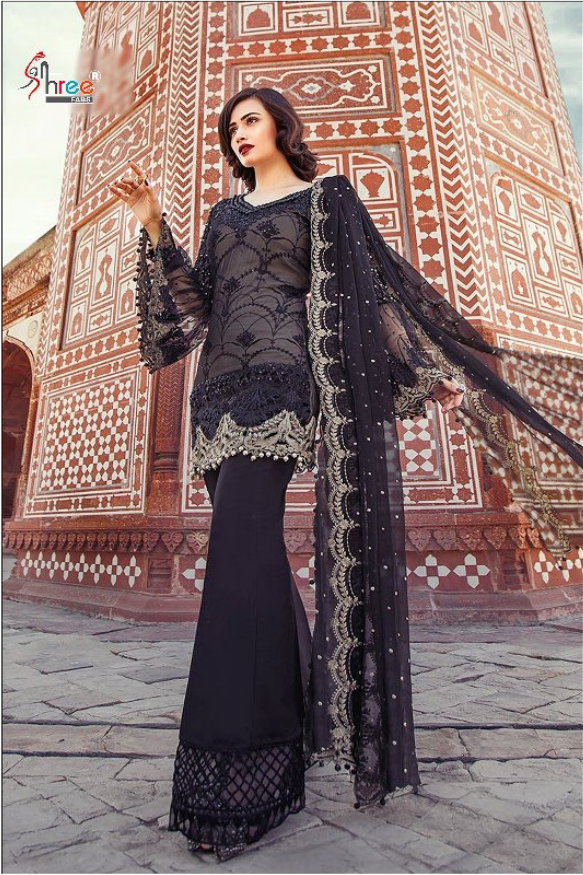




**MBROIDERED
MARIYA.B.**
Vol-4

1134





**EMBROIDERED
MARIYA.B.**
VOL-4

1137

A woman with long, wavy brown hair is wearing a light green, heavily embroidered outfit. The outfit features intricate gold and red embroidery, including floral and paisley patterns. She is also wearing large, ornate gold earrings. The background is a warm, reddish-brown wall with a chandelier visible on the left.

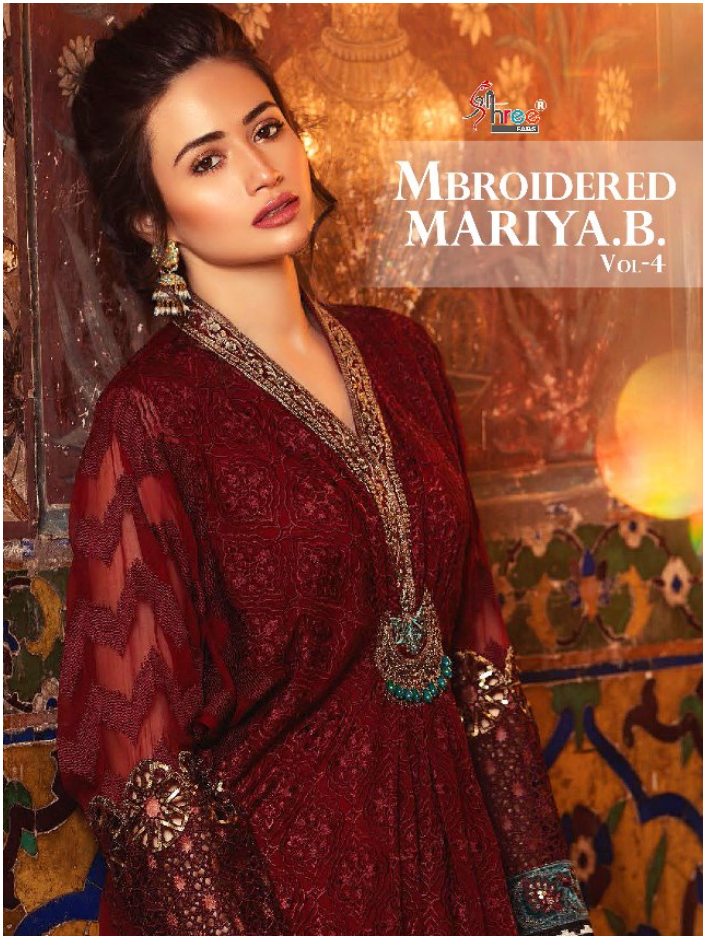
**EMBROIDERED
MARIYA.B.**
VOL-4



**EMBROIDERED
MARIYA.B.**
Vol-4

1131





Shree®
ESTD 1985

EMBROIDERED MARIYA.B.

Vol-4



1131

1132



1133

1134



1135

1136