



Attractive  
look

*KESIPresents classic trends for your stylish everyday!*

LM 105



**New Brand**

**New Zest**

**New Innovations**



**New Passion**

**New Energy**

A Product By



**New Products**

**New Creativity**

**Wear Confidence with LYMI Originals!**



CATALOG NAME  
**ESTEEM**

PIECES : **6**

|      | FABRICS DETAILS                 |
|------|---------------------------------|
| TOP  | Reyon Flex with Schiffli        |
| Size | S-36, M-38, L-40, XL-42, XXL-44 |



*We're excited to announce*



Has Launched New Catalog

**ESTEEM**

**BOOK NOW**

## Fabrics Details

**TOP :-** Rayon Flex With Schiffli

**No.of Design :-** 06

**Dispatching :-** 5 to 6 Days Later

**Booking Started From Now.....**

**Order Yours Soon.....**

AVAILABLE SIZES

|             |    |    |    |    |     |
|-------------|----|----|----|----|-----|
| (SIZES)     | S  | M  | L  | XL | XXL |
| (IN INCHES) | 36 | 38 | 40 | 42 | 44  |





From the fashion archives to e reports, the one constant factor  
ence of certain countries and e  
designer collection. Schiffli is  
Indian culture and regional fla  
and style always depend on go  
fantastic combination of s sh  
hance your beauty. our opinion  
says your mood and reflects you  
ty. So we create all the shads  
your beauty. What is the comm  
tween design and trends? It's  
nection – Both are essential  
fashion look to you. Seen on  
and everywhere the trends are  
fashionable – look  
B E A U  
What is the common factor  
and trends? It's a fashion come  
are essential to give perfect las  
you. Seen on catwalks here  
where the trends and design g  
able look to you

LM 101



*LM*  
**104**



Attractive  
look

*KESIPresents classic trends for your stylish everyday!*

LM 105

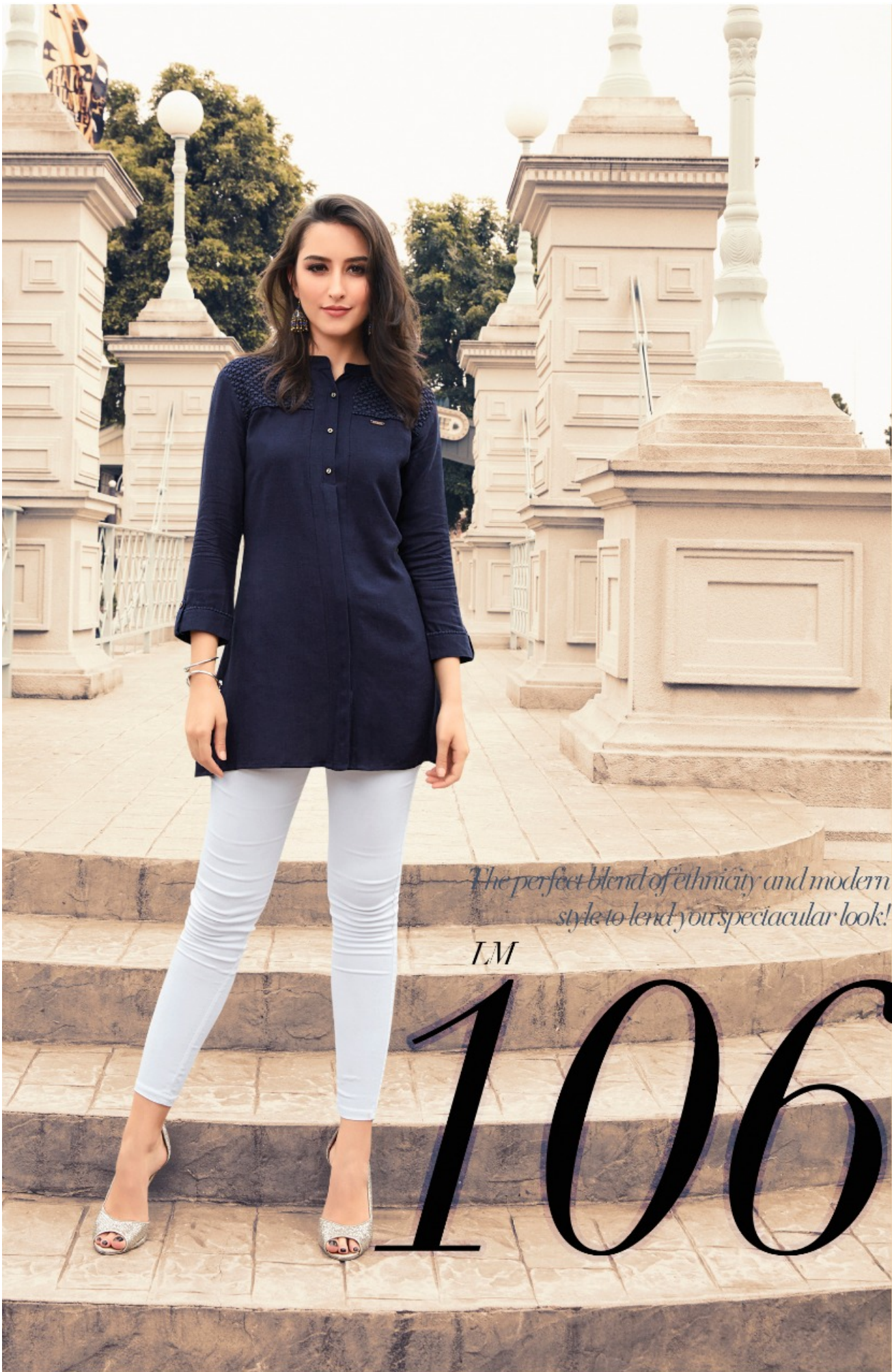


LM

102

*Your dream attire is here with a whiff of pure bliss.*





*The perfect blend of ethnicity and modern style to lend your spectacular look!*

*TM*

**106**



*Fashion is about suspense and surprise and fantasy;  
it is about setting your own rules!*

LM  
**103**

