

INAYA

BY STUDIO LIBAS



A woman with long, wavy brown hair is posing in a white room. She is wearing a vibrant green, off-the-shoulder, long-sleeved top with a gold sequined belt. Her skirt is red with a dark red floral pattern. She is also wearing gold high-heeled sandals and a gold bracelet. She is standing next to a white door and a white bench, with her right leg raised and resting on the bench. The background features a white wall with decorative carvings.

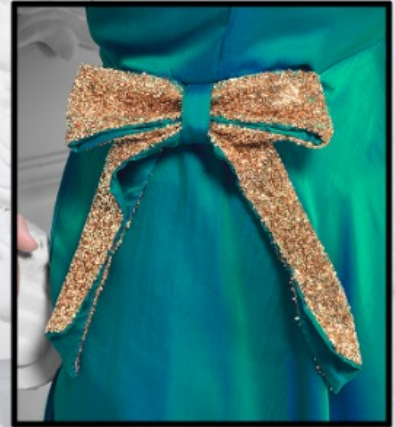
INAYA

BY STUDIO LIBAS



INAYA

BY STUDIO LIBAS



INAYA

BY STUDIO LIBAS





INAYA

BY STUDIO LIBAS



INAYA

BY STUDIO LIBAS







INAYA

BY STUDIO LIBAS

INAYA

BY STUDIO LIBAS







INAYA

BY STUDIO LIBAS

INAYA

BY STUDIO LIBAS







INAYA

BY STUDIO LIBAS

A woman with long dark hair is posing in a classical setting. She is wearing a vibrant green, off-the-shoulder, long-sleeved top with a gold sequined belt and a dark blue, patterned skirt. She is also wearing gold high-heeled sandals and a gold necklace. She is standing next to a white classical column and a white ornate chair. The background is a white wall with intricate carvings.

INAYA

BY STUDIO LIBAS