

vastrikaa  
style forever

U

The new  
way to  
wear  
fashion

DARK  
ANGEL  
SPARKLE  
COLLECTION

FALL  
IN  
LOOK

FACE THE SEASON IN THE  
LATEST COLLECTION ESSENTIALS!





**NEW  
SEASON**  
*shini collection*



*Design V110*

vastrikaa  
style forever

U

The new  
way to  
wear  
fashion

DARK  
ANGEL  
SPARKLE  
COLLECTION

FALL  
IN  
LOOK

FACE THE SEASON IN THE  
LATEST COLLECTION ESSENTIALS!



FASHION INSIDE



Design VIII

**ONLY  
U**

**COLLECTION**



# U

vastrikaa  
style forever



DESIGN NO.	PRODUCT DESCRIPTION
109	MASLIN TOP WITH HANDWORK FANCY DOUBLE LAYER PALAZZO & DUPATTA WITH HANDWORK.
110	MASLIN TOP WITH HANDWORK, DHOTI STYLE PANT & STOLL WITH HANDWORK TASSELS.
111	DOBBY MASLIN TOP WITH HANDWORK & JACQUARD WEAVE PANT.
112	FANCY TWO TONE DOBBY VISCOSE JACKET, TOP WITH HANDWORK & STYLISH SHARARA PANT OF FANCY VISCOSE FABRIC.
113	MASLIN TOP WITH HANDWORK, MASLIN SHARARA & STOLE WITH HANDWORK & TASSEL.
114	FANCY DIGITAL PRINT MASLIN JACKET, RAYON TOP WITH HANDWORK & RAYON SHARARA.





  
vaatrikaa  
LIFE BEAUTY



ONLY  
FOCUS  
ON  
LOOK



Design V112



Design V114

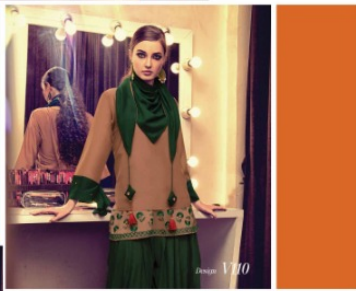
RETRO  
AT  
LOOL





Design V109

*Fashion is about dressing according to what's fashionable. Style is more about being yourself.*



Design V110



Design VIII



Design V112



Design V113

*When you love fashion, there is no weekend. Everything just blends together.*



Design V114

*That is the key of this collection, being yourself. Don't be into trends. Don't make fashion over you, but you decide what you are, what you want to express by the way you dress and the*

The key to a good wardrobe is to have a few pieces that are versatile and can be worn in many different ways. This is why we have designed these pieces to be worn in many different ways. The first piece is a purple floral dress. It is a long-sleeved, knee-length dress with a high neckline and a buttoned placket. It is made of a soft, flowing fabric and is perfect for a romantic evening. The second piece is a green and white dress with a green scarf. It is a long-sleeved, knee-length dress with a high neckline and a buttoned placket. It is made of a soft, flowing fabric and is perfect for a romantic evening. The third piece is a black dress with a graphic print. It is a long-sleeved, knee-length dress with a high neckline and a buttoned placket. It is made of a soft, flowing fabric and is perfect for a romantic evening.

The key to a good wardrobe is to have a few pieces that are versatile and can be worn in many different ways. This is why we have designed these pieces to be worn in many different ways. The first piece is a blue dress with a brown cardigan. It is a long-sleeved, knee-length dress with a high neckline and a buttoned placket. It is made of a soft, flowing fabric and is perfect for a romantic evening. The second piece is a black dress with a red shawl. It is a long-sleeved, knee-length dress with a high neckline and a buttoned placket. It is made of a soft, flowing fabric and is perfect for a romantic evening.

The key to a good wardrobe is to have a few pieces that are versatile and can be worn in many different ways. This is why we have designed these pieces to be worn in many different ways. The first piece is a black dress with a graphic print. It is a long-sleeved, knee-length dress with a high neckline and a buttoned placket. It is made of a soft, flowing fabric and is perfect for a romantic evening.

The key to a good wardrobe is to have a few pieces that are versatile and can be worn in many different ways. This is why we have designed these pieces to be worn in many different ways. The first piece is a patterned dress with a red top. It is a long-sleeved, knee-length dress with a high neckline and a buttoned placket. It is made of a soft, flowing fabric and is perfect for a romantic evening.

SHIN  
IN YOUR  
INTERNAL



Design V109