







SPARKLE
B

B E W I T C H E S

EVOLVED FROM THE DEEP BLUE SEA, AQUA
AND GREENS EMBELISHED WITH MOTIFS
AND FLOWERS. A SEASON'S MUST HAVE.





SPARKLE
A



A black and white photograph of a woman with long, dark, wavy hair. She is wearing a blue, long-sleeved dress with a ruffled collar and a small bow on the sleeve. Her right hand is resting on her neck, and she is looking upwards and to the right with a serene expression. The background is dark, and the lighting highlights her face and the texture of her dress.


Prettify

SPARKLE





T R E N D Y T R E D I T I O N A L

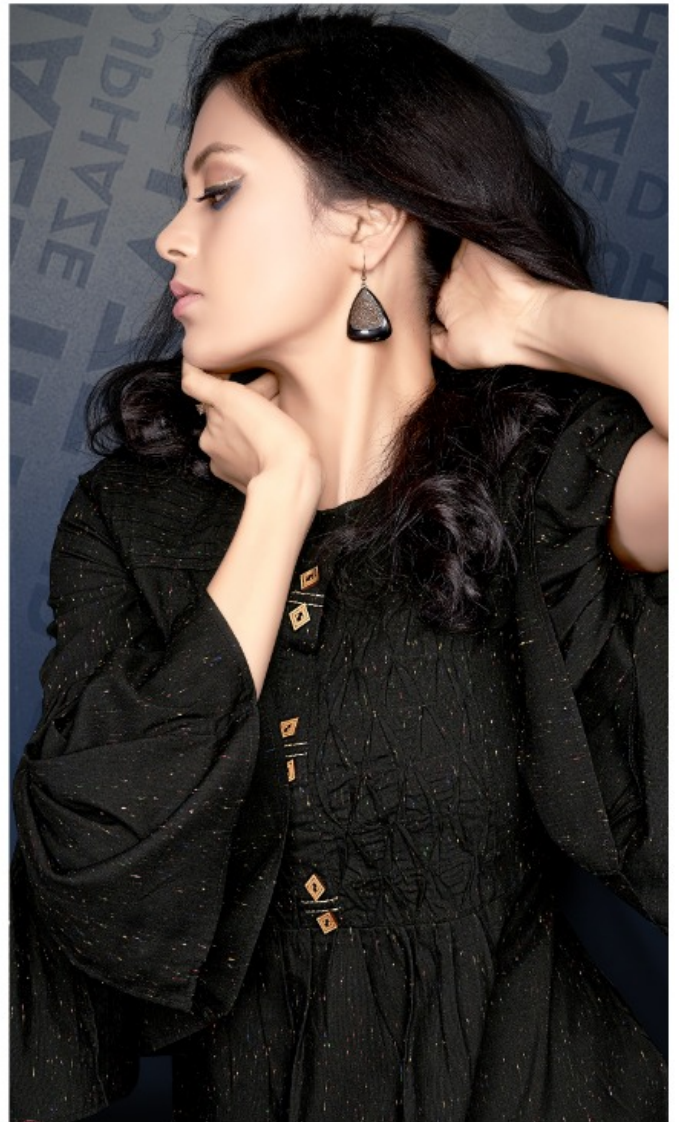


SPARKLE
D



G L A M O R O U S

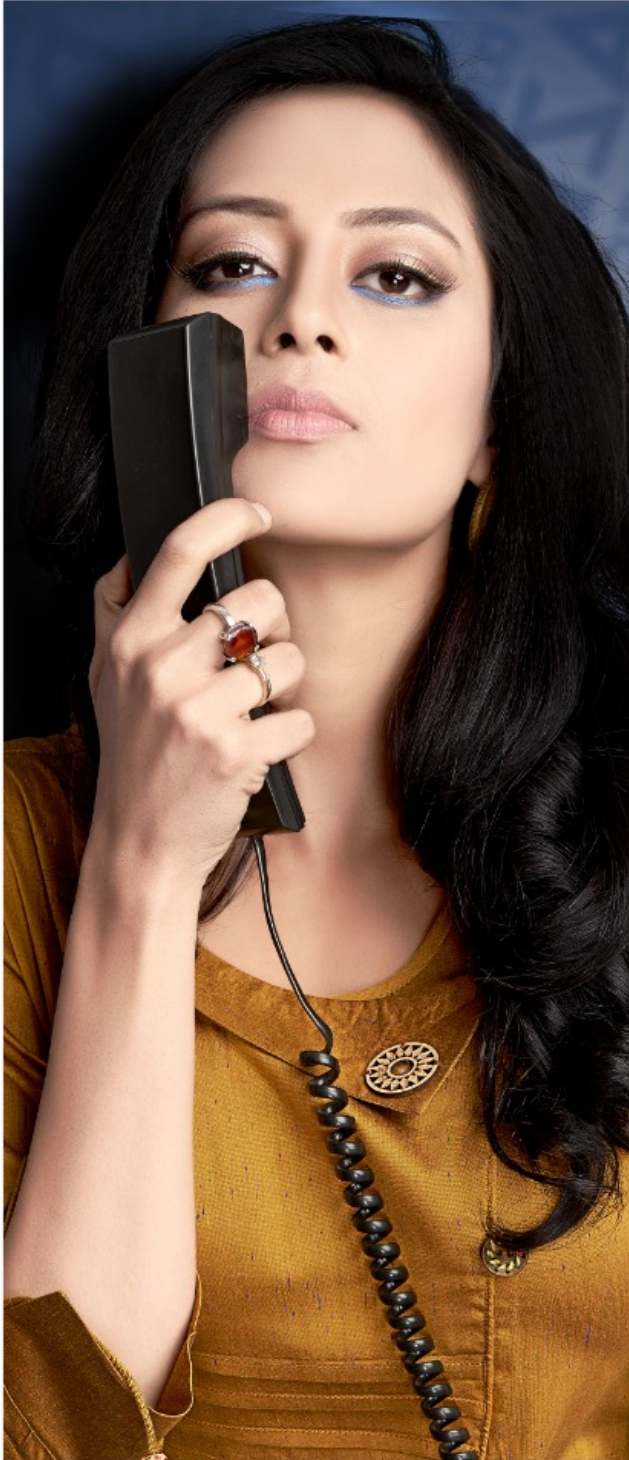
WHILE YOU WEAR AN ELECTRIFYING BLUE, THEY WILL TURN AN ENVOIOUS GREEN







SPARKLE
C



SPARKLE
E





SPARKLE
F