



Om Lex
REFINING CLASSICITY

DESIGNED BY THE LUXURY CLOTHING MANUFACTURER IN INDIA. THE BEST QUALITY OF FABRIC TO THE ABSOLUTE PERFECTION.



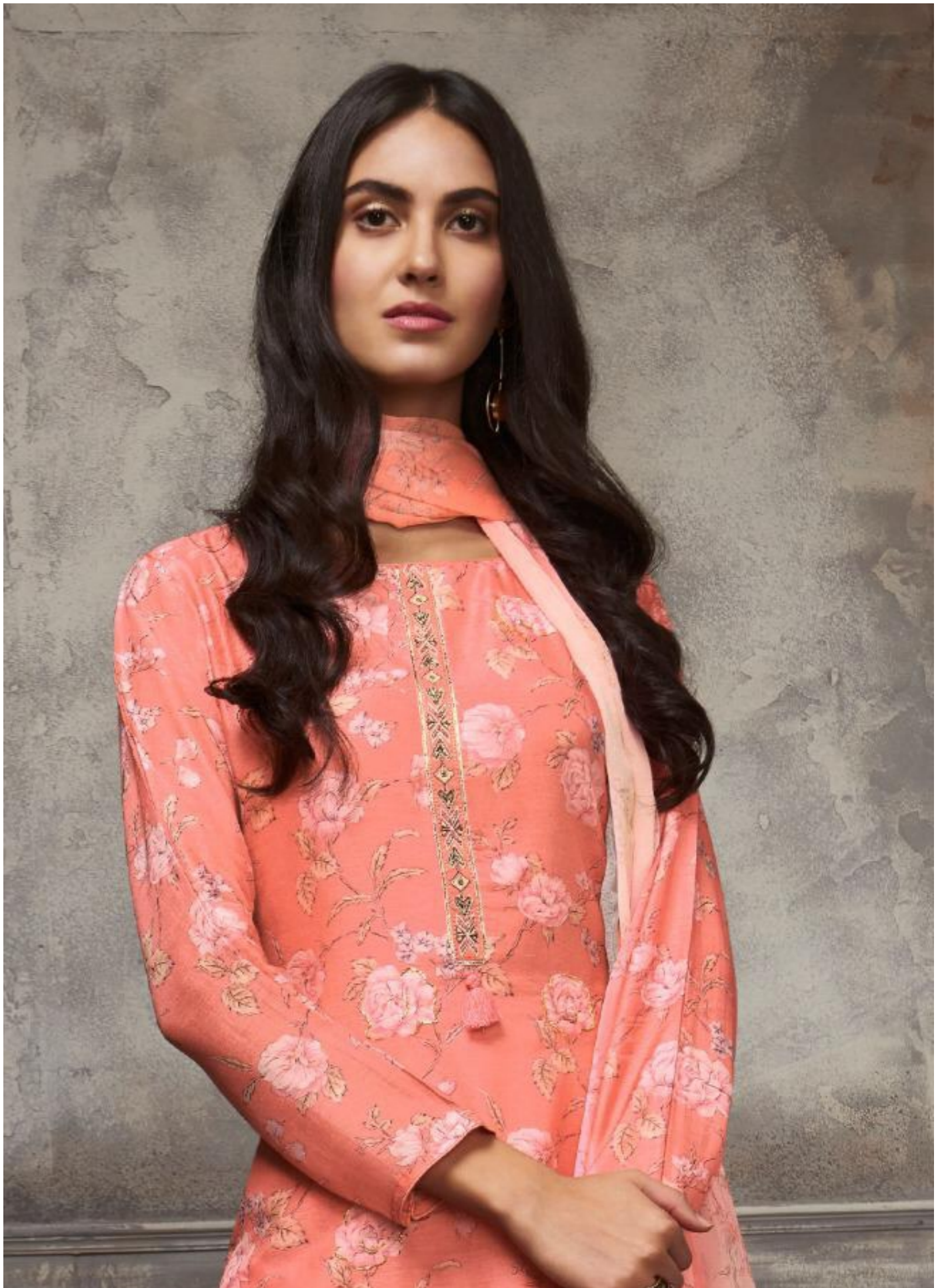
ASFA SILK WITH HAND WORK

DESIGN NO.	PRODUCT NAME	PRICE
801	FLORIA	1695/-
802	FLORIA	1695/-
803	FLORIA	1695/-
804	FLORIA	1695/-
805	FLORIA	1695/-
806	FLORIA	1695/-
TOTAL PCS : 06		TOTAL AMT. : 10170/-

TOP : ASFA SILK

BOTTOM : HEAVY LAWN COTTON

DUP.: BEMBERG CHIFFON





Om Lex[®]
REFINING ETHNICITY

F L O R I A





801





801



802



803



804



805



806



THE ROSE IS THE EMBLEEM
AND BLOOMGARDEN OF LOVE
THE LEX, HER FAVORITE
STATE IS THE MUSEUM OF
BEAUTY AND PURITY.



806





THE ROSE IS THE FLOWER AND HANDMAIDEN OF LOVE; THE LILY,
HER PAIR ASSOCIATE IS THE EMBLEM OF BEAUTY AND PURITY





THE ROSE IS THE FLOWER AND HANDMAIDEN OF LOVE, THE TREE FERN AND ORCHID IS THE EMBLEM OF BEAUTY AND PURITY.

