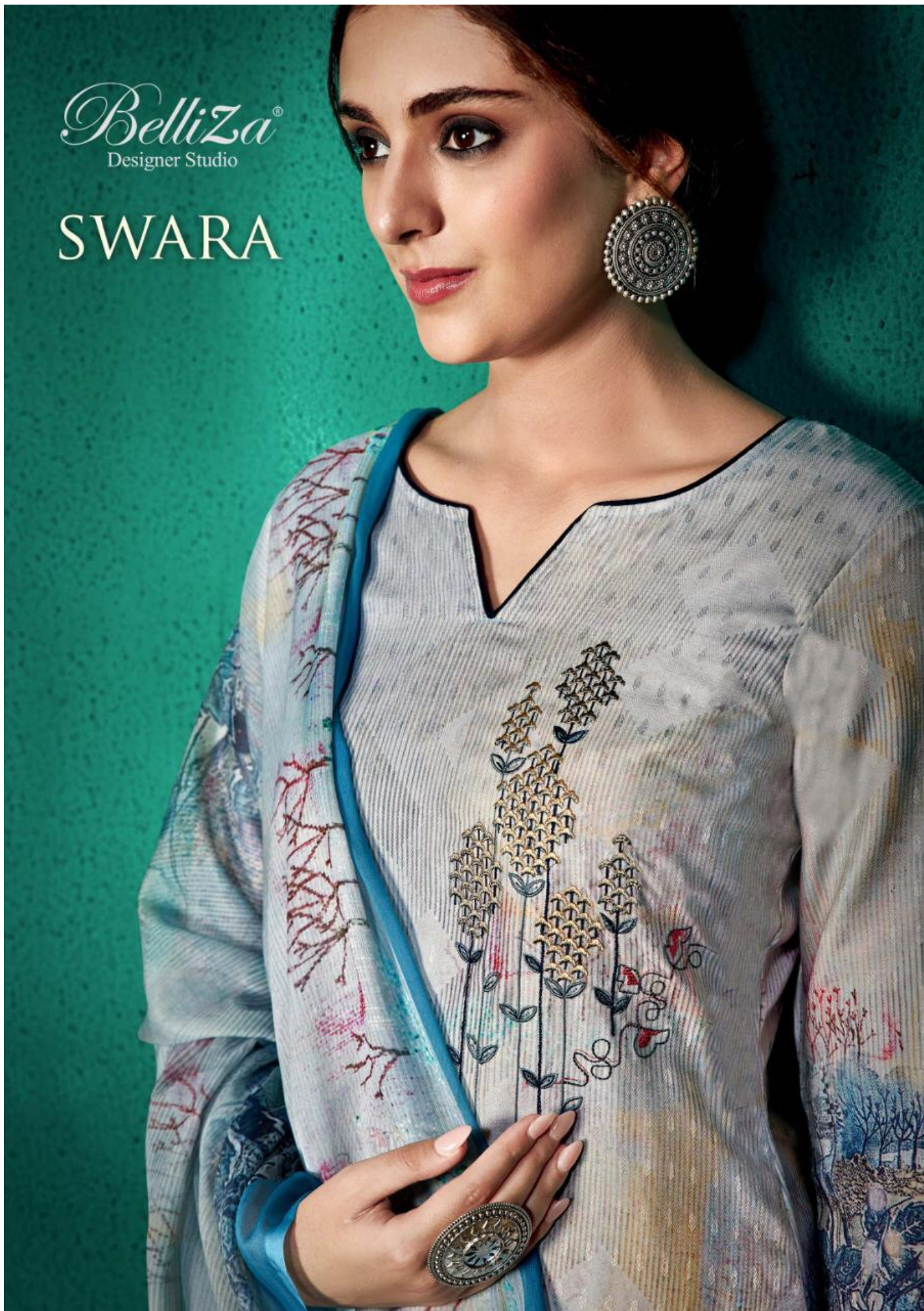


BelliZa[®]
Designer Studio

SWARA

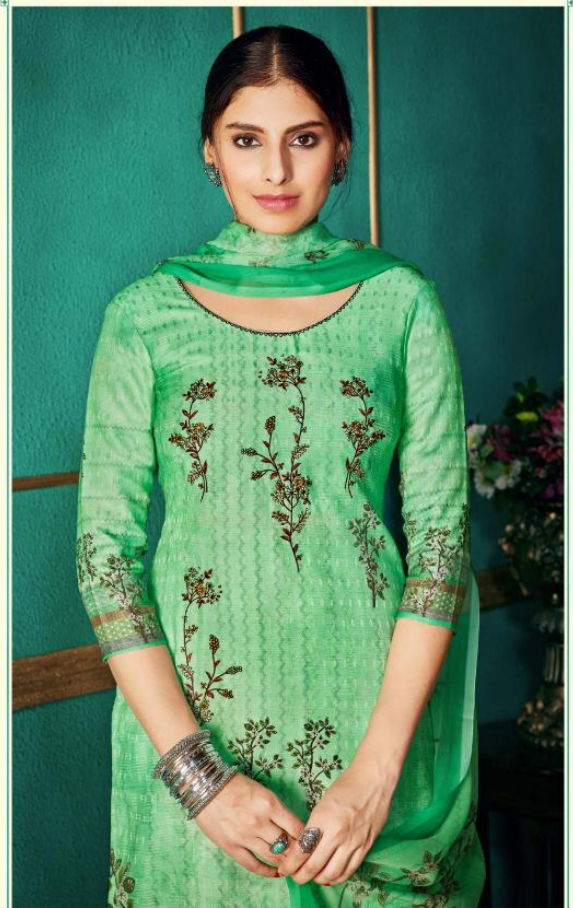




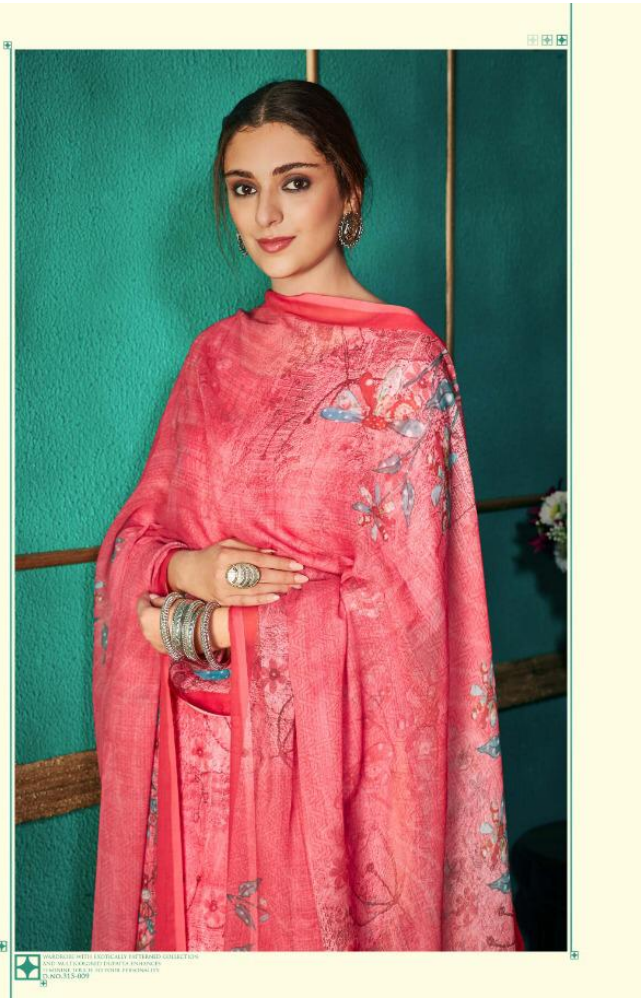
SWARA

WARDROBE WITH EXOTICALLY PATTERNED COLLECTION
AND MULTICOLORED DYEING
ENHANCES FEMININE TOUCH TO
YOUR PERSONALITY.

Belliza[®]
Designer Studio
www.bellizadesignersstudio.com



UNBROUDED WITH EMBROIDERY BY TERANO COLLECTIONS AND MASTERSHOPPER
DESIGNER: ANAND D. VASUDEVA. CALL US FOR A PERSONALITY.
D-NO. 315-003



© 2018 PAKISTAN CLOTHING INDUSTRY ASSOCIATION
ALL RIGHTS RESERVED. NO PART OF THIS PUBLICATION
MAY BE REPRODUCED OR TRANSMITTED IN ANY FORM OR BY ANY MEANS
ELECTRONIC OR MECHANICAL, INCLUDING PHOTOCOPYING, RECORDING, OR BY ANY INFORMATION STORAGE AND RETRIEVAL SYSTEM.



315-001



315-002



315-003



315-004



315-005



315-006



315-007



315-008



315-009



315-010

Belliza
Designer Studio
www.bellizaspeccstudio.com
SWARA







100% COTTON
100% COTTON
100% COTTON



SHIRAZI WITH PATRICIA OFFSHIRE COLLECTION AND MIFT KHAN
DESIGNED BY PATRICIA OFFSHIRE
DESIGNED BY PATRICIA OFFSHIRE
DESIGNED BY PATRICIA OFFSHIRE





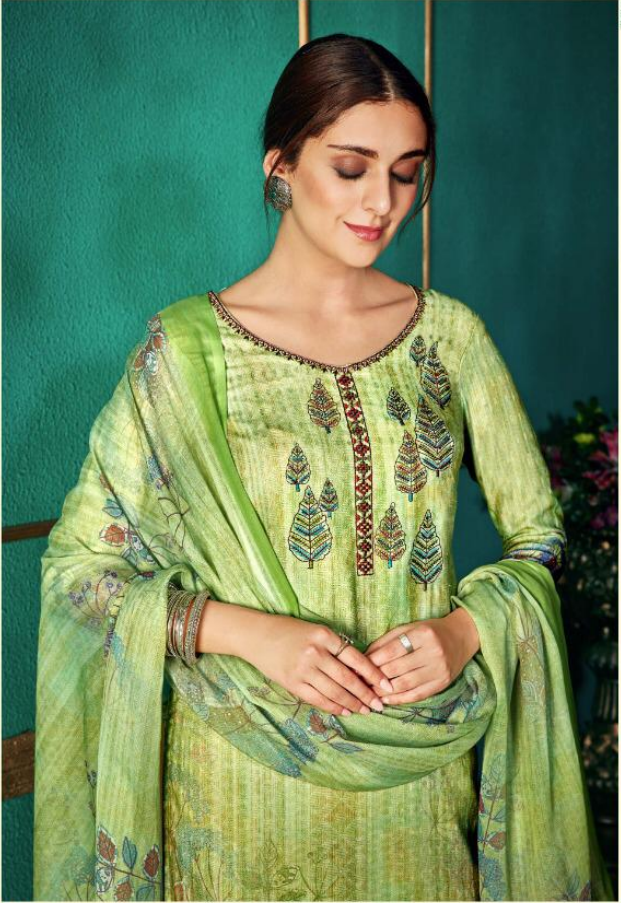
SWARA

WARDROBE WITH THEORICALLY EXPERTISED COLLECTION
AND SOFTLY COLORED BIRTHA
ENHANCES HEALTHY TOUCH TO
YOUR PERSONALITY

Belliza
Designer Studio
www.bellizadesignerstudio.com

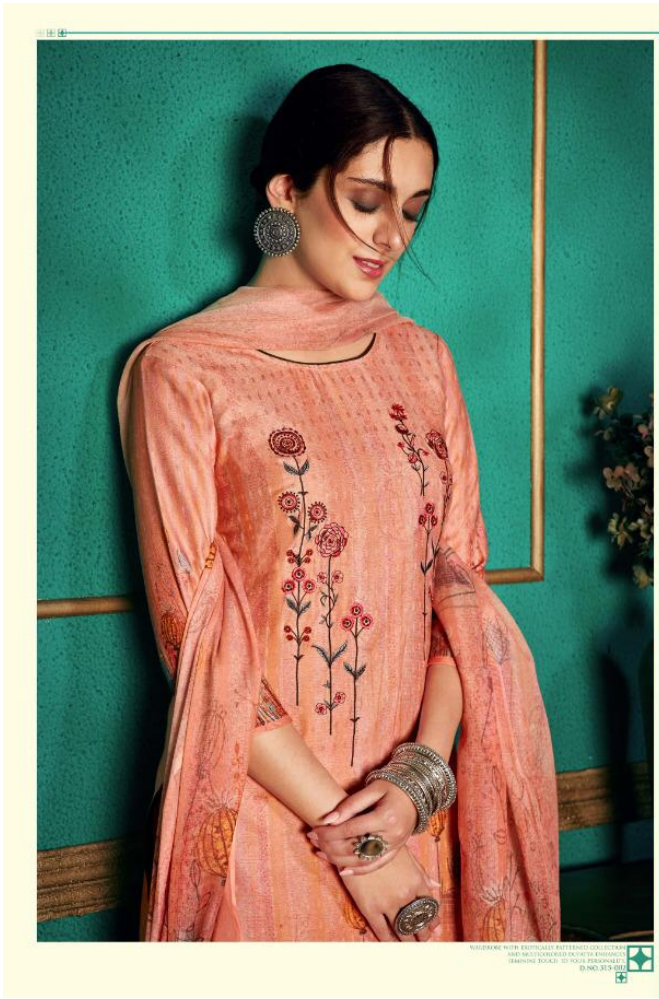


POKROBIŁY SIĘ POCZĘTKI KARTYNY - COLLECTION 2016
WYKONANE W WIELKOPOLSKIM CENTRUM TWÓRCZYM
W OLSZTYNIE, UL. SŁOŃSKA 10/12, 15-003 POLESZC
TEL. 41 23 90 21



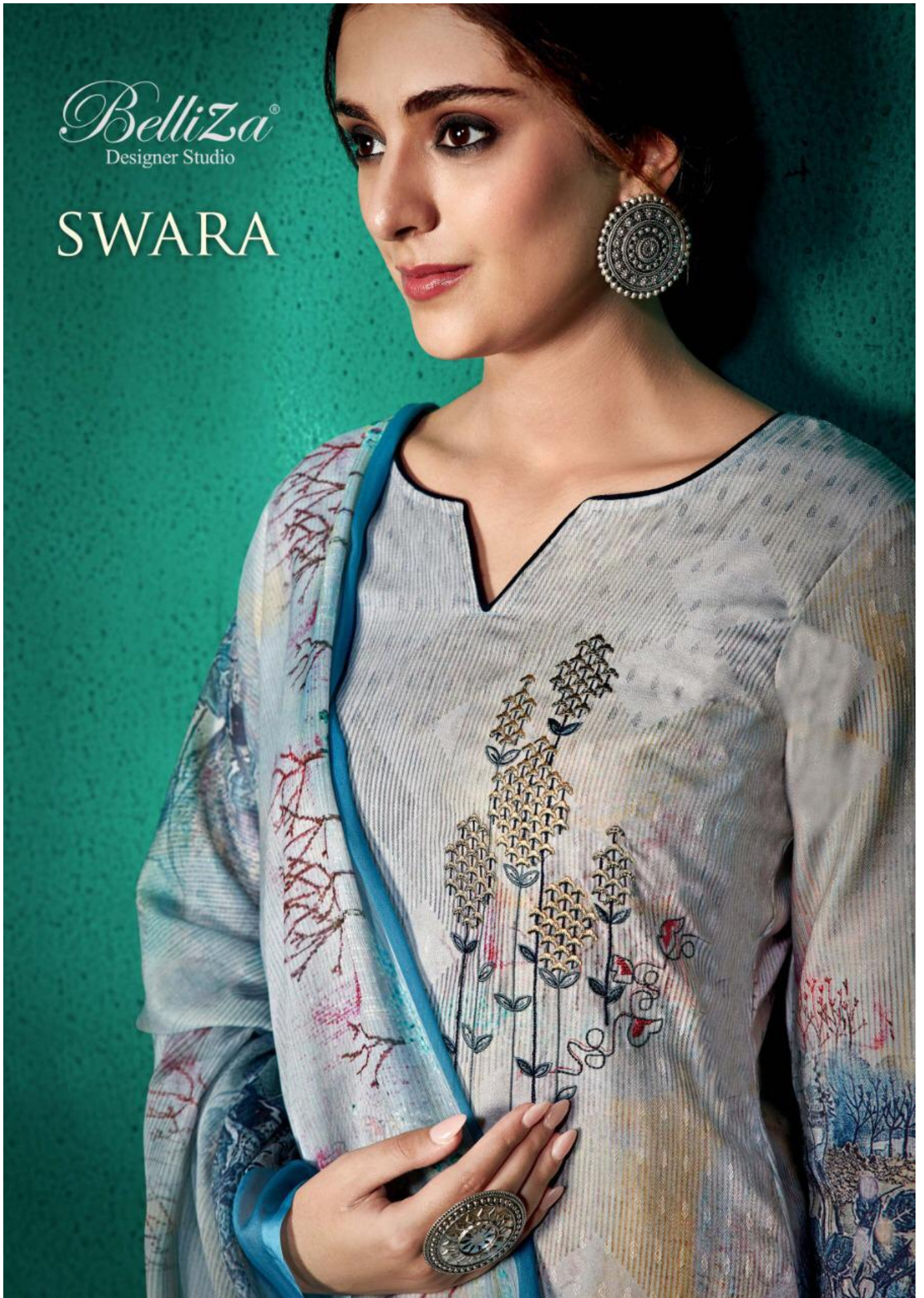
MADE IN INDIA
100% COTTON
100% SILK
100% WOOL
100% LINEN
100% JUTE
100% HEMP
100% RAYON
100% POLYESTER
100% NYLON
100% SPANDEX
100% CASHMERE
100% MERINO WOOL
100% ALPACA
100% VICUNA
100% ANGORA GOAT
100% ANGORA RABBIT
100% SILK
100% WOOL
100% LINEN
100% JUTE
100% HEMP
100% RAYON
100% POLYESTER
100% NYLON
100% SPANDEX
100% CASHMERE
100% MERINO WOOL
100% ALPACA
100% VICUNA
100% ANGORA GOAT
100% ANGORA RABBIT

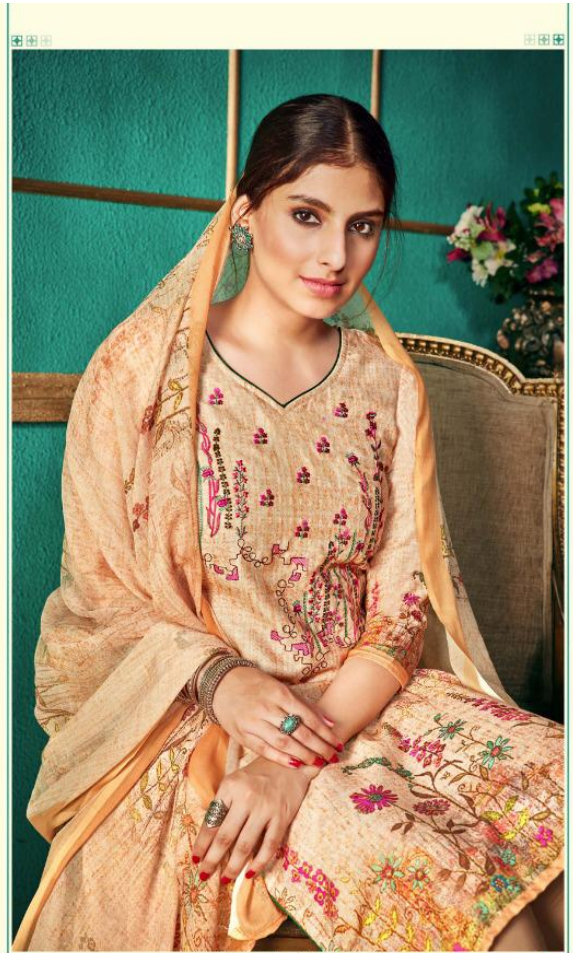




BelliZa[®]
Designer Studio

SWARA





PRODOTTO IN ITALIA PER IL MERCATO ITALIANO
DISTRIBUZIONE IN TUTTO IL MONDO
D.N. 315 006



MADE IN INDIA
AND ALL RIGHTS RESERVED
© 2023
DINO 212-807

