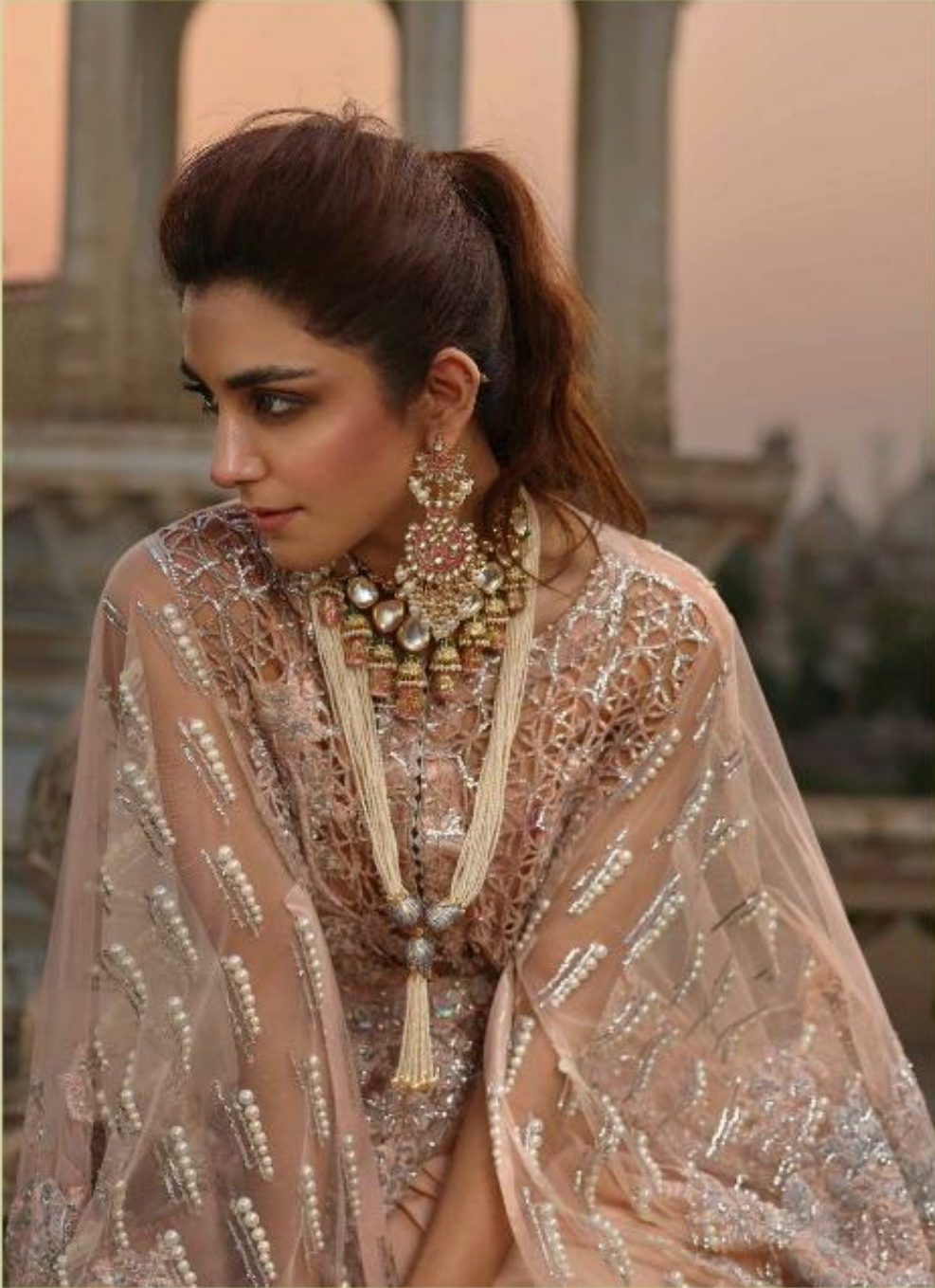


**D**  
**DEEPSY**  
SUITS



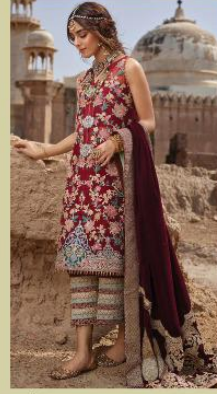
*Crimson*



311



312



315



316



313



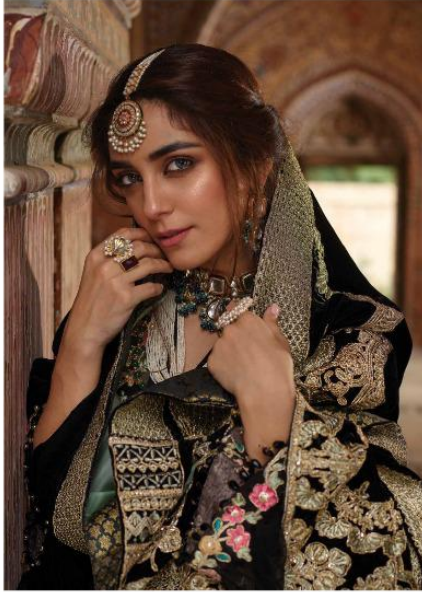
314



317

**DEESY**  
SUITA  
*Crimson*

*Kashmiri*

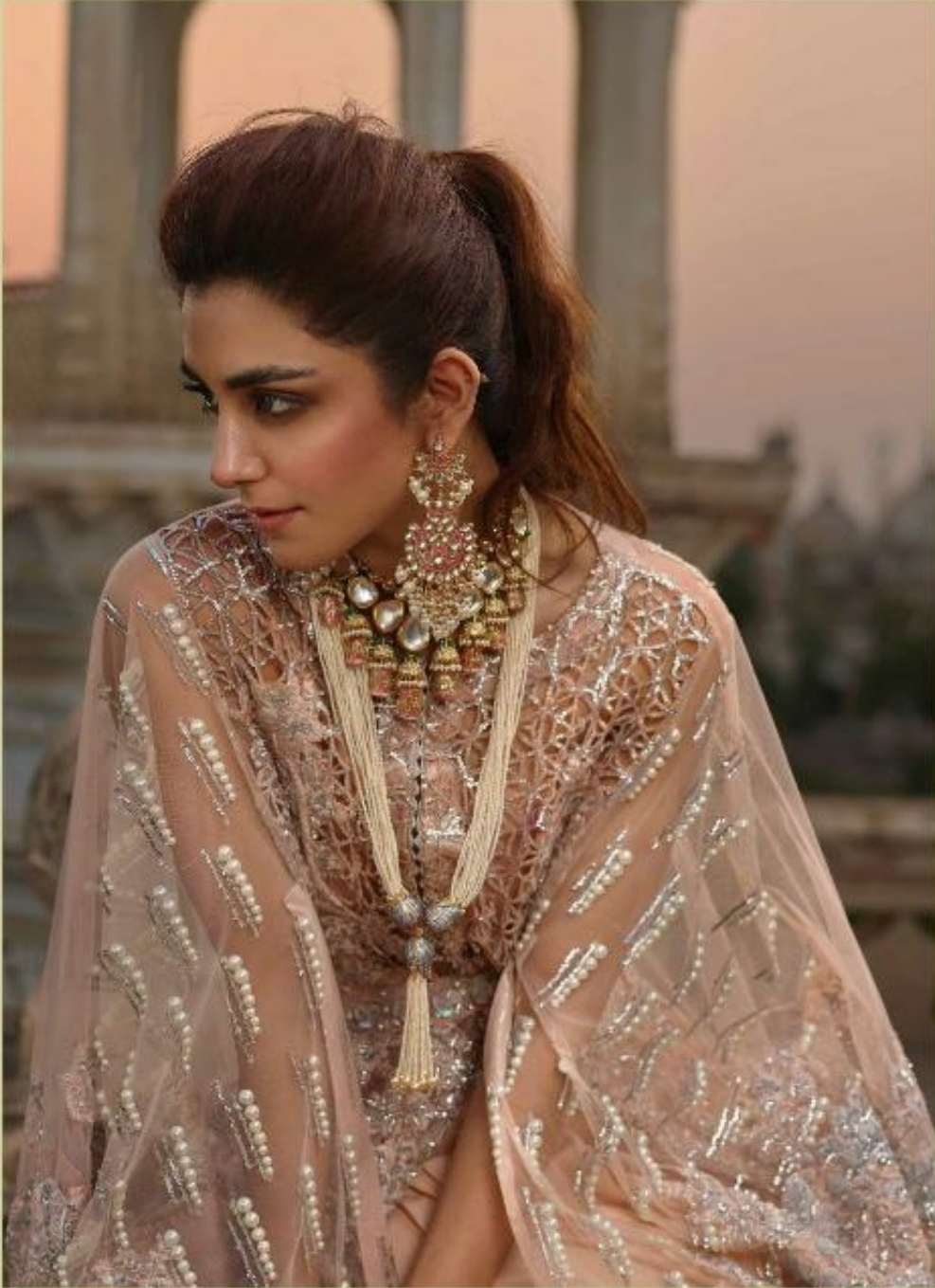


316

**B**  
DEEPSY  
2014



**D**  
**DEEPSY**  
SUITS



*Crimson*



*Azure*

313

PRESENTING TO YOU OUR NEW CATALOGUE



DEEPSY  
SUITS

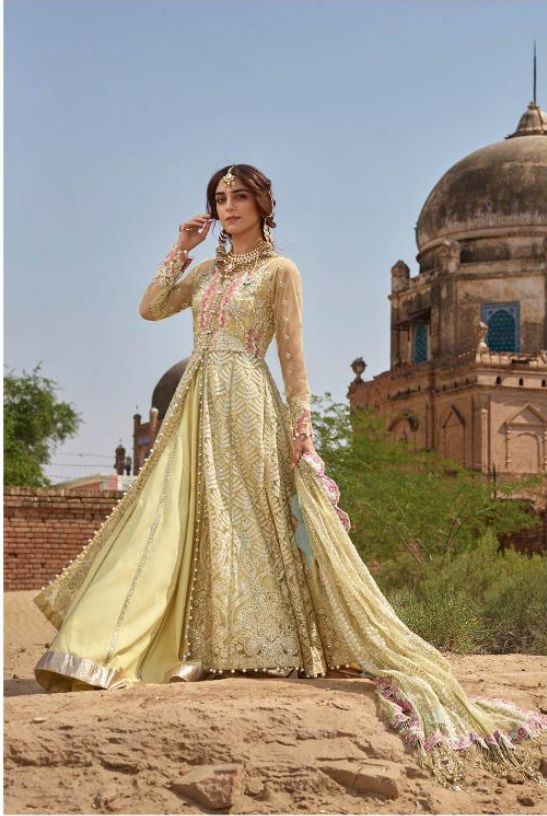
*Crimson*

DESIGN NO.	CATLOG NAME	DESCRIPTION	PRICE
311	<i>Crimson</i>	TOP : Butterfly net with heavy embroidery & handwork Santoon with accessories BOTTOM : Butterfly net with heavy embroidery & DUPATTA : embroidery lace	1349/-
312	<i>Crimson</i>	TOP : Butterfly net with heavy embroidery & handwork BOTTOM : Santoon DUPATTA : Butterfly net with heavy embroidery & embroidery lace	1349/-
313	<i>Crimson</i>	TOP : Butterfly net with heavy embroidery & handwork BOTTOM : Santoon DUPATTA : Organza digital print with embroidery	1349/-
314	<i>Crimson</i>	TOP : Butterfly net with heavy embroidery & handwork BOTTOM : Santoon DUPATTA : Organza digital print with embroidery	1349/-
315	<i>Crimson</i>	TOP : Georgette with heavy embroidery BOTTOM : Santoon DUPATTA : Velevt with heavy embroidery	1349/-
316	<i>Crimson</i>	TOP : Georgette with heavy embroidery BOTTOM : Santoon DUPATTA : Velevt with heavy embroidery	1349/-
317	<i>Crimson</i>	TOP : Butterfly net with heavy embroidery & handwork BOTTOM : Santoon DUPATTA : Butterfly net with heavy embroidery & embroidery lace	1349/-

Total Pieces:7

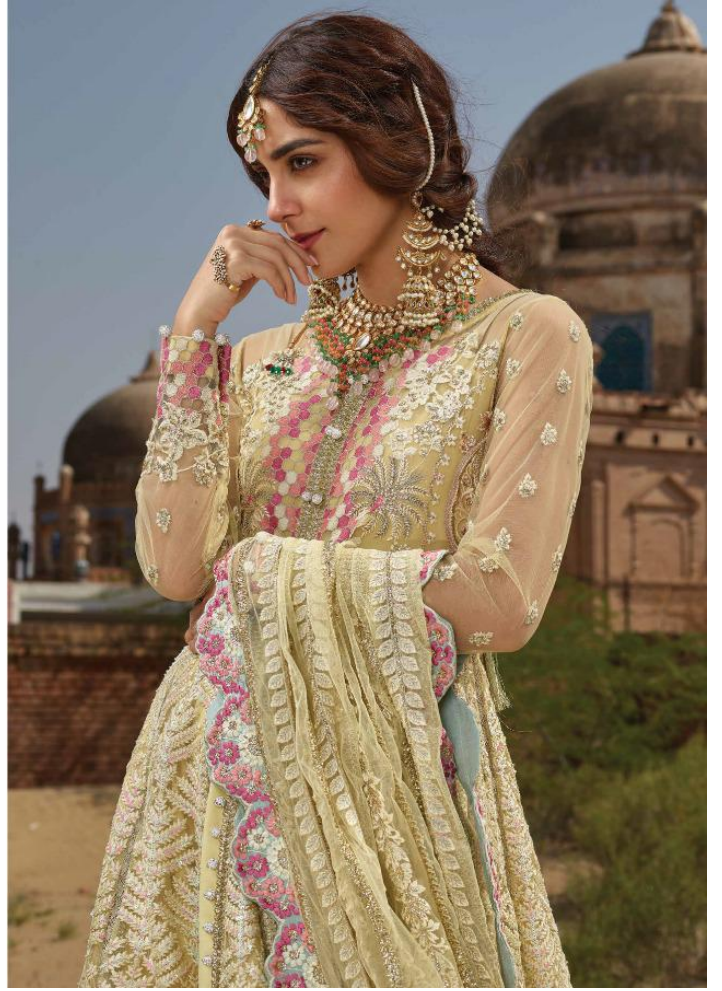
Total Amount: 9443+ GST





*Chhikankari*

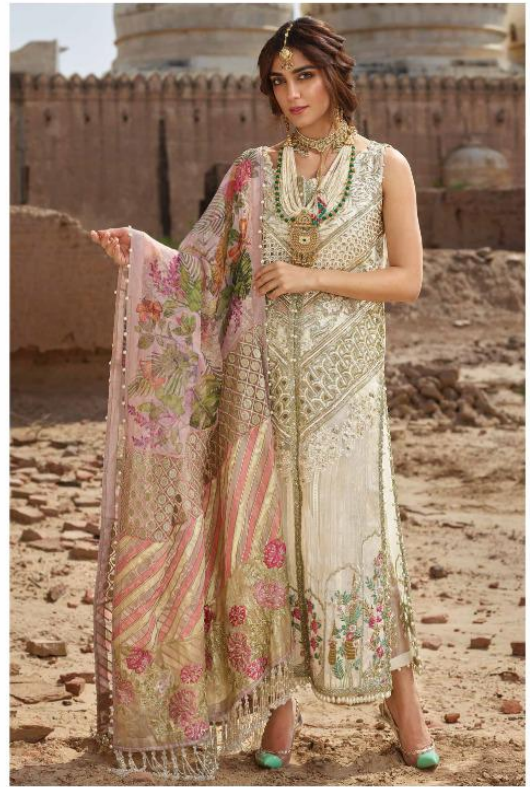
311







**D**  
DEEPSY  
SUITA



*Porcelain*

314

**S**  
**DEEPLY**  
KUTTA



  
*Chatta Patti*  
312





*Starry Night*

317

