

*nakkashi*  
ETHNIC PERFECTION AT ITS BEST





*nakkashi*  
ETHNIC PERFECTION AT ITS BEST





*nakkashi*



D.NO.- 3085

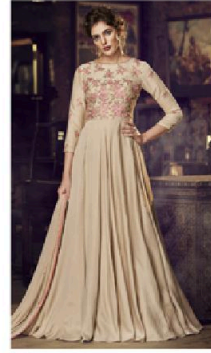




D.NO.- 3030



D.NO.- 3031



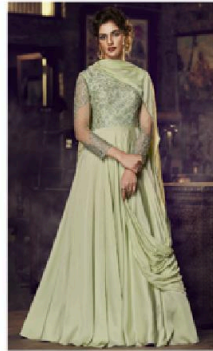
D.NO.- 3032



D.NO.- 3033



D.NO.- 3034



D.NO.- 3035



D.NO.- 3036

*nakkashi*  
FLAIR







nakkashi



D.NO.- 3030



*Touch of*  
**MODERNITY**

Blue modal sat in green with  
resham work on it, paired with  
soft colour chiffon dupatta



*nakkashi*

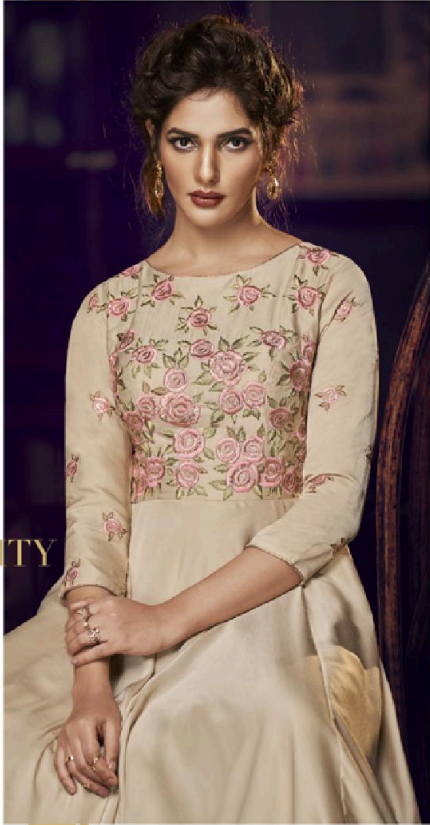
*Sartorial*  
**ELEGANCE**

Dusty cream modal satin  
gown with mirror work on  
it, paired with self colour  
chiffon dupatta

D.NO.:- 3081



nakkashi



Touch of  
MODERNITY

Chiccoo modal satin  
gown with subtle resham  
work on it, paired with  
self colour chiffon  
dupatta

D.NO:- 3032





nakkashi

Sartorial  
ELEGANCE

Rose dawn modal satin  
gown with sequin and  
resham work on it, paired  
with self colour chiffon  
dupatta

D.NO.- 3033

*nakkashi*



D.NO.- 3083

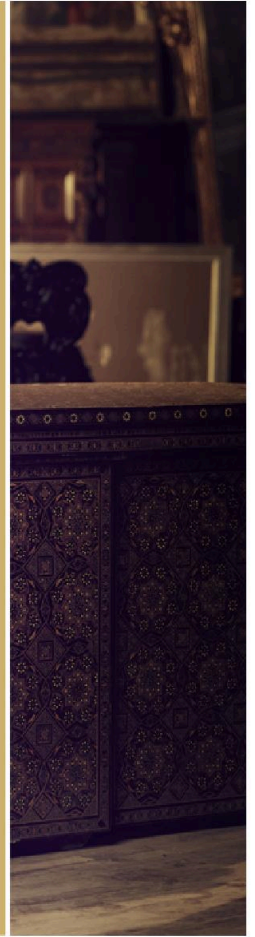


*nakkashi*

*Sheer*  
SOPHISTICATION

Sky colour net gown with  
blue resham and sequin  
work on it, paired with  
self chiffon dupatta

D.NO:- 3084



*nakkashi*



D.NO:- 3084



# FLAIR

## GOWN (FULL STICH)

SR.NO.	D.NO	Top	Jacket	STICH	Dupatta	RATE
1	3080	Blue Colour Modal Satin Fabrics	No	BUCRAM	Blue Colour Chiffon fabrics	2589
2	3081	Dusty Cream Colour Modal Satin Fabrics	No	BUCRAM	Dusty Cream Colour Chiffon Fabrics	2479
3	3082	Chickoo Colour Modal Satin Fabrics	No.	BUCRAM	Chickoo Colour Chiffon Fabrics	2449
4	3083	Rose Dawn Colour Modal Satin Fabrics	No.	BUCRAM	Rose Dawn Colour Chiffon Fabrics	2509
5	3084	Sky Colour Net Fabric	No.	BUCRAM	Sky Colour Chiffon Fabrics	2539
6	3085	Light Dusty Liril Colour Modal Satin Fabrics	No.	BUCRAM	Light Dusty Liril Colour Chiffon Fabrics	2289
7	3086	Dusty Cedar Colour Modal Satin Fabrics	No.	BUCRAM	Dusty Cedar Colour Chiffon Fabrics	2109
				<b>TOTAL</b>	<b>16963/-</b>	
				<b>AVERAGE</b>	<b>2423/-</b>	

*nakkashi*



D.NO.- 3030



*Touch of*  
**MODERNITY**

Blue modal sat in geam with  
resham work on it, paired with  
soft colour chiffon dupatta

*nakkashi*  
ESTD. 2004 IN DELHI

[www.nakkashi.in](http://www.nakkashi.in)



