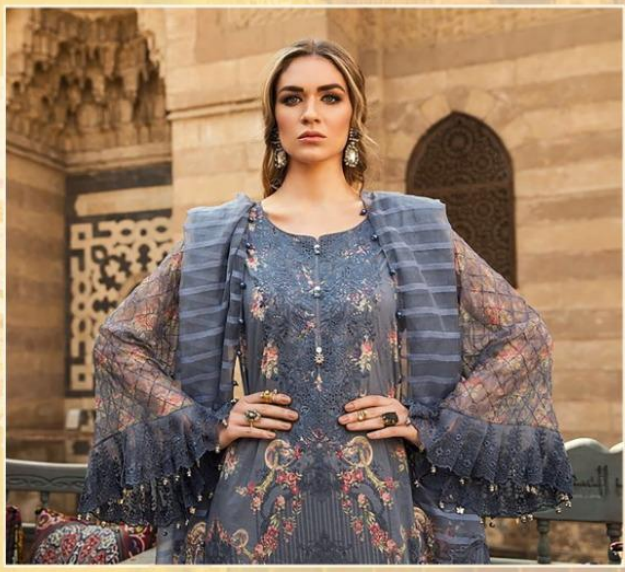




MARIYA.B.LAWN
Spring Summer-20
Vol-1

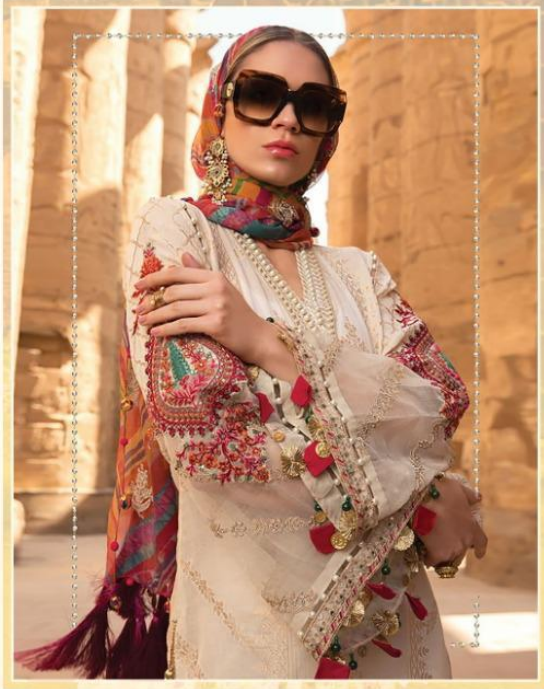




1192

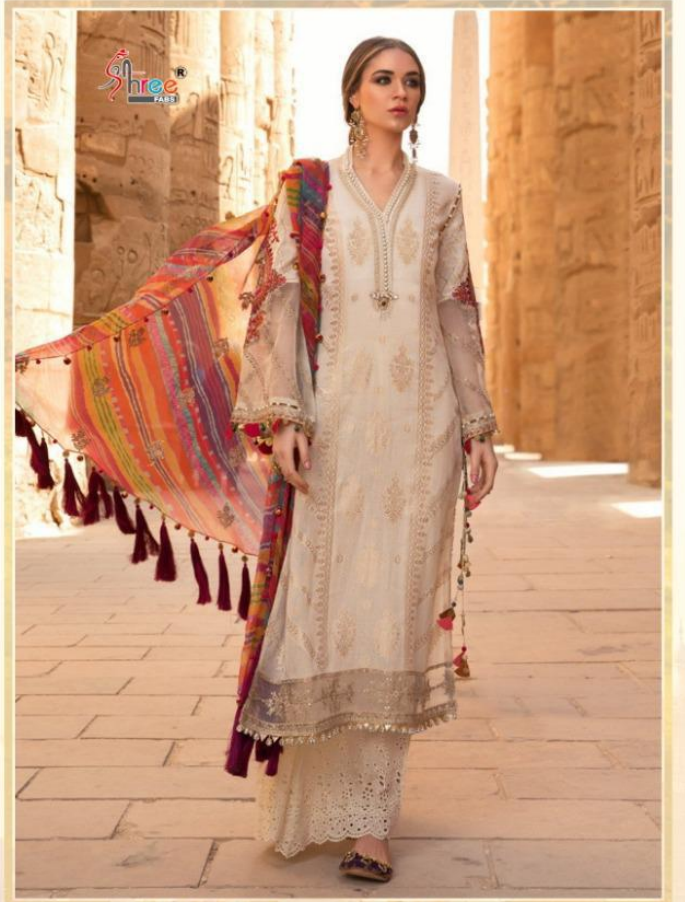
MARIYA..B.LAWN
Spring Summer-20
Vol-1





1191

MARIYA.B.LAWN
Spring Summer-20
Vol-1





MARIYA.B.LAWN

SPRING SUMMER-20

Vol-1



1193

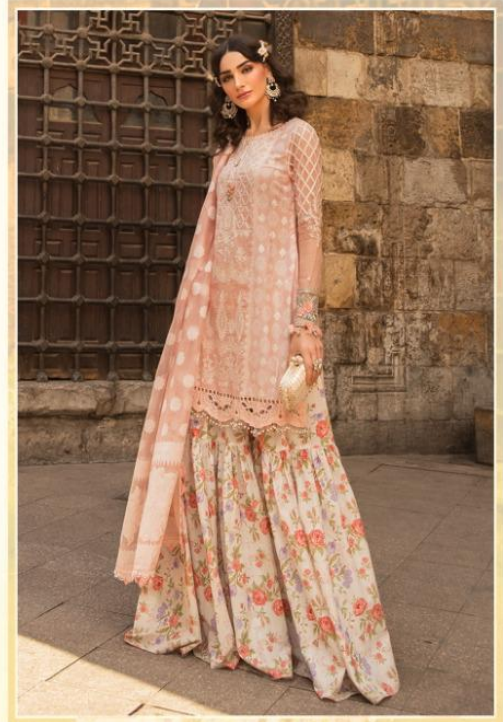
MARIYA.B.LAWN
Spring Summer-20
Vol-1



1194

MARIYA.B.LAWN
Spring Summer-20
Vol-1





MARIYA.B.LAWN
Spring Summer-20
Vol-1



Shree®
FABR



1189

MARIYA.B.LAWN
Spring Summer-20
Vol-1





MARIYA.B.LAWN
Spring Summer-20
Vol-1



1189



1190



1191



1192



1193



1194



1195



1196



MARIYA.B.LAWN
Spring Summer-20
Vol-1



MARIYA.B.LAWN
Spring Summer-20
Vol-1



1195

MARIYA.B.LAWN
Spring Summer-20
Vol-1





1196

MARIYA.B.LAWN
Spring Summer-20
Vol-1



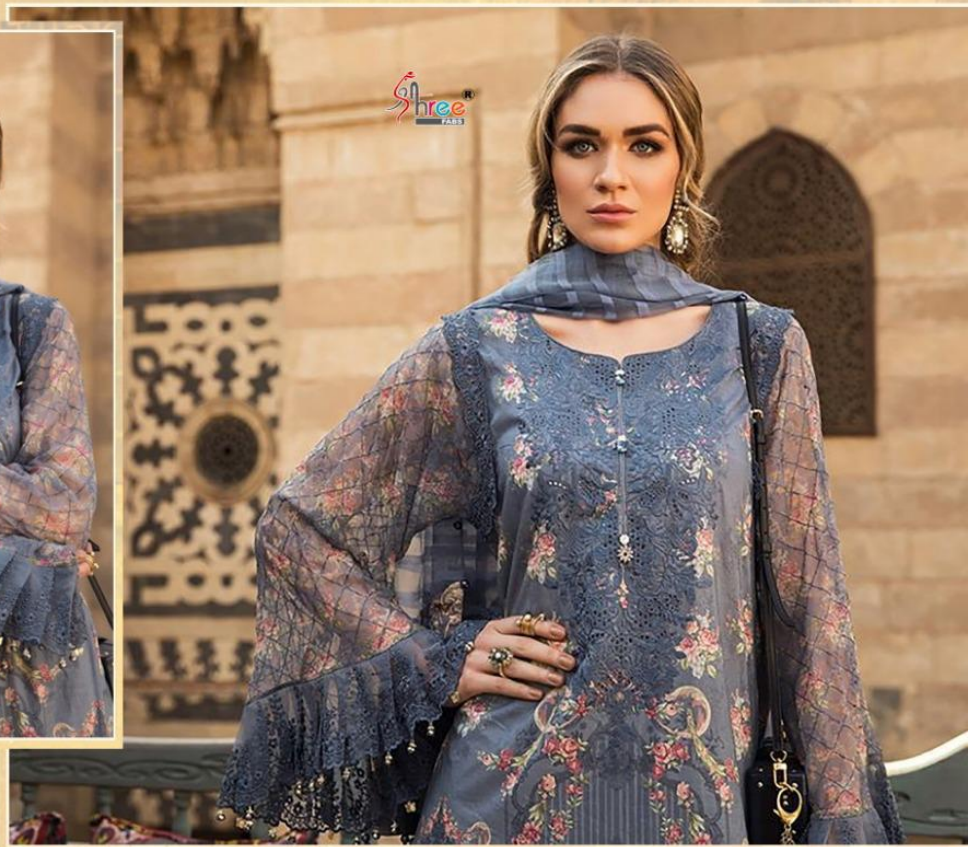


MARIYA.B.LAWN
Spring Summer-20
Vol-1





Shree
FABRI



MARIYA.B.LAWN
Spring Summer-20
Vol-1

Hellow to everyone



present new looking and stylish printed designs

MARIYA.B.LAWN

SPRING SUMMER-20

Vol-1

D.NO.	TOP	BOTTOM	DUPATTA	RATE
1189	PURE COTTON LAWN PRINT WITH PEARL FOIL AND EXCLUSIVE EMBROIDERY	SEMI LAWN (PRINTED)	HEAVY ORGANJA WITH INK PRINT	1043.00
1190	PURE COTTON LAWN PRINT WITH EXCLUSIVE EMBROIDERY	SEMI LAWN (PRINTED)	NAZMIN CHIFFON WITH WORK	923.00
1191	PURE COTTON LAWN PRINT WITH EXCLUSIVE EMBROIDERY	COTTON SIFLY WORK	CHIFFON PRINTED	965.00
1192	PURE COTTON LAWN PRINT WITH EXCLUSIVE EMBROIDERY SLEVES CHINON PRINT SIQVENCE WORK	SEMI LAWN (PRINTED)	ORGANJA PRINT WITH COTTON PRINT BORDER	1065.00
1193	PURE COTTON LAWN PRINT WITH EXCLUSIVE EMBROIDERY	COTTON SIFLY WORK	CHIFFON PRINTED	965.00
1194	PURE COTTON LAWN PRINT WITH EXCLUSIVE EMBROIDERY	SEMI LAWN (PRINTED)	NAZMIN CHIFFON WITH WORK	923.00
1195	PURE COTTON LAWN PRINT WITH EXCLUSIVE EMBROIDERY SLEVES CHINON PRINT SIQVENCE WORK	SEMI LAWN (PRINTED)	ORGANJA PRINT WITH COTTON PRINT BORDER	1065.00
1196	PURE COTTON LAWN PRINT WITH PEARL FOIL AND EXCLUSIVE EMBROIDERY	SEMI LAWN (PRINTED)	HEAVY ORGANJA WITH INK PRINT	1043.00

HEAVY EMBROIDERY IN ALL PIECES

Average Rate :- 999/- + GST

Thank's For Your Support