

A woman with dark hair is shown in profile, looking towards the right. She is wearing a grey suit with intricate red and teal embroidery. Her accessories include large, ornate earrings and a matching bracelet. The background is a soft-focus pile of dry, brown leaves.

KAY-VEE
PREMIUM SUITS

JHUMMAR





Modern women groove herself in
Contemporary of our traditional outfits.

GREAT
feeling

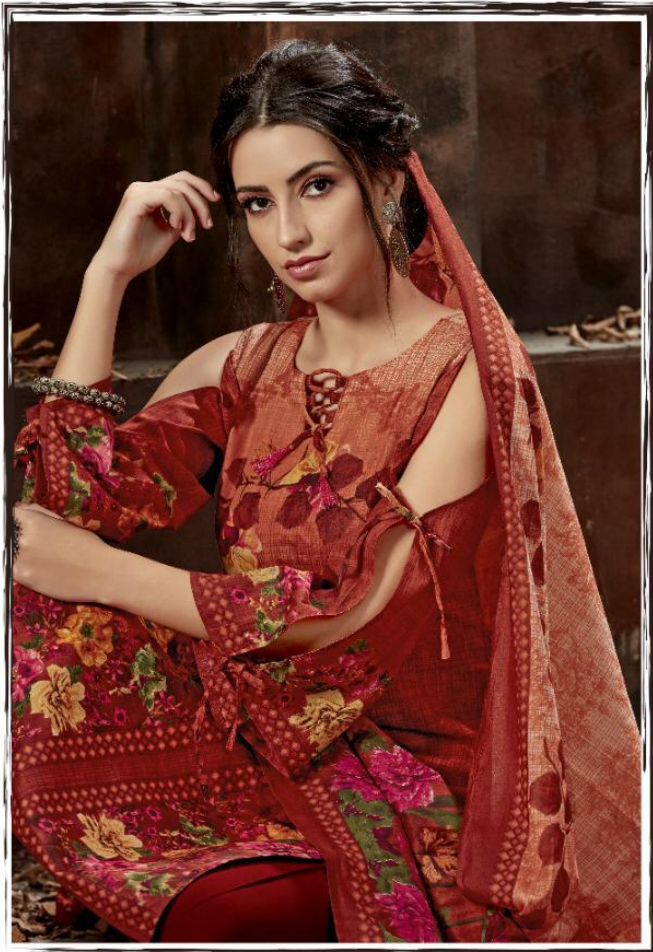


Attaining urbanity with ethnicity in Apparelling with us
Establishing new outlook for trends and fashion progressions

IMAGINATIVE
fashion











closet
LAVISHING

You must dare to be different, coz Styling is always to be exclusive.
Differentiate yourself by jazzing up with our designs.

D.No.135-002





Feel the resonance with our sensational
and extremely majestic collection this year...

DISTINCTIVE
charming





D.No.135-001

D.No.135-002

D.No.135-003



D.No.135-006

D.No.135-007

D.No.135-008



D.No.135-004

D.No.135-005



D.No.135-009

D.No.135-010



Renaissance of modernization, gives us Power
to look unmissable yet graceful

BRIGHT
buzzing

D.No. 135-004