



  
sheeshmahal®

**TOP- GEORGETTE**  
**BOTTOM/INER - SANTOON**  
**DUPATTA - NET**



#S-1320 A

#S-1320 B

#S-1320 C

#S-1320 D

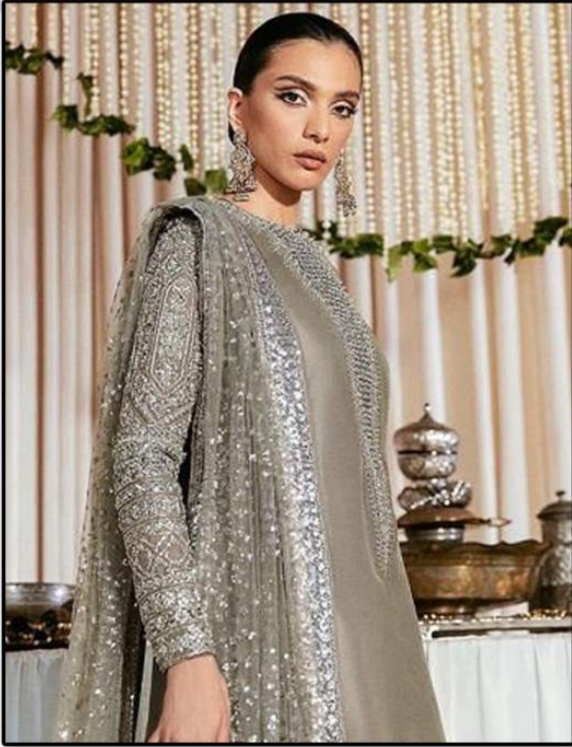
#S-1320 E

#S-1320 F

#S-1320 G



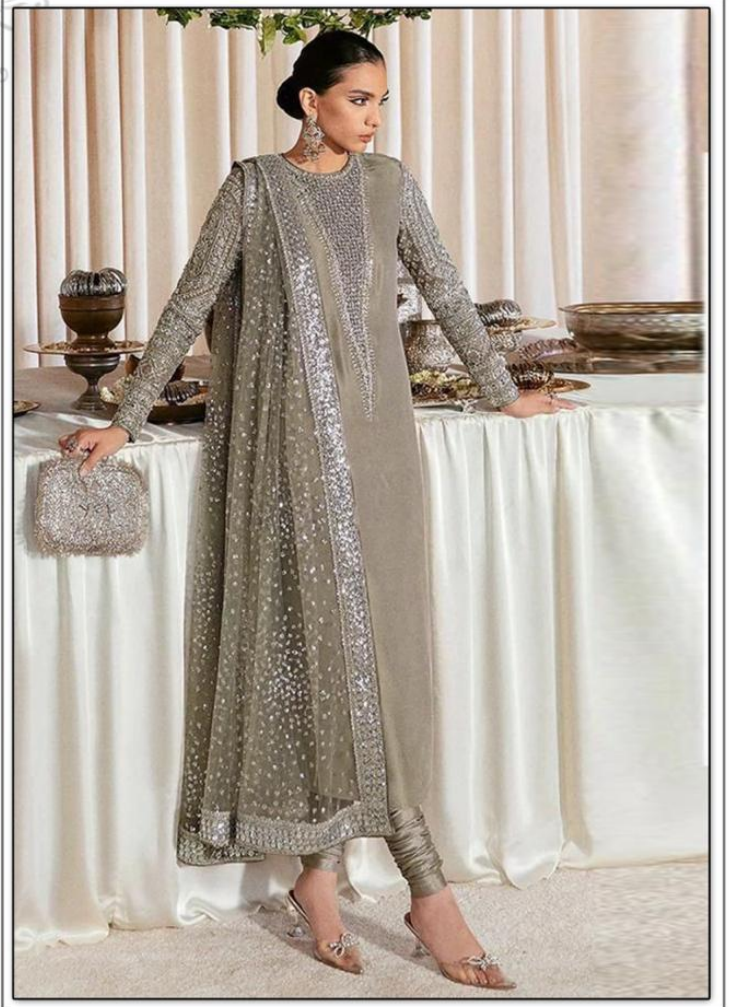
**S**  
sheeshmahal®



#S-1320-A

**Top- GEORGETTE**  
**Bottom/Iner- SANTOON**  
**Dupatta- NAZMEEN**

**WASHING INSTRUCTIONS**  
DO NOT USE ANY TYPE OF BLEACH OR OTHER BLEACHING AGENTS  
BEFORE DRYING. COLORED FABRICS SHOULD BE SOAKED IN WATER  
ALL COMPONENTS SEPARATELY FOR 15 MINUTES  
DO NOT KEEP ANY FABRIC IN CONTACT WITH DIRECT SUNLIGHT OR HARSH  
HIGH-COLOURED AND WHITE FABRICS SEPARATELY  
IRON CLOTHES AT MODERATE TEMPERATURE DO NOT DRY FABRIC IN DIRECT SUNLIGHT  
(EXTRA LACES, HANGINGS AND ACCESSORIES ARE NOT INCLUDED)



**S**  
sheeshmahal®



#S-1320-B

**Top- GEORGETTE**  
**Bottom/Iner- SANTOON**  
**Dupatta- NAZMEEN**

**WASHING INSTRUCTIONS**  
DO NOT USE ANY TYPE OF BLEACH OR CHLORINE-BLEACHING COMPOUNDS  
BEFORE DYEING/COLOURING/FABRIC SHOULD BE SOAKED IN WATER  
ALL COMPONENTS SEPARATELY FOR 15 MINUTES  
DO NOT KEEP ANY FABRIC IN CONTACT WITH INK OR TOXIC COLOURS (DIP INK)  
HIGH-COLOURED AND WHITE FABRICS SEPARATELY  
IRON CLOTHES AT MODERATE TEMPERATURE DO NOT DRY FABRIC IN DIRECT SUNLIGHT  
(EXTRA LACES/HANGINGS AND ACCESSORIES ARE NOT INCLUDED)



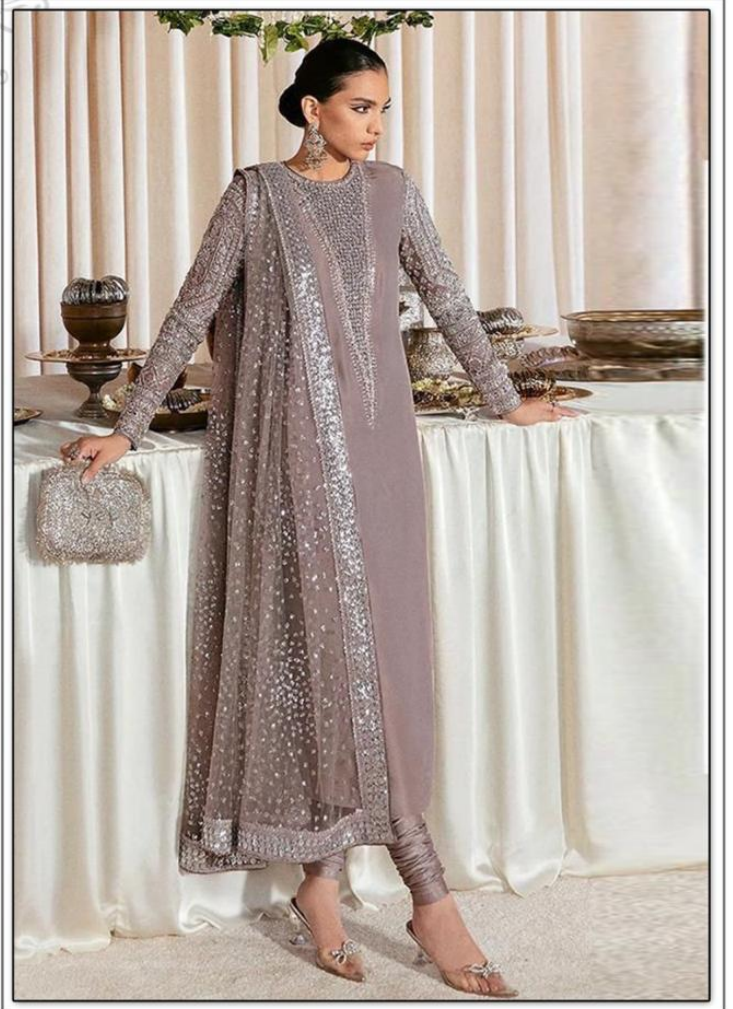
**S**  
sheeshmahal®



#S-1320-C

**Top- GEORGETTE**  
**Bottom/Iner- SANTOON**  
**Dupatta- NAZMEEN**

**WASHING INSTRUCTIONS**  
DO NOT USE ANY TYPE OF BLEACH OR OTHER BLEACHING CHEMICALS  
BEFORE DRYING. COLOURED FABRICS SHOULD BE SOAKED IN WATER  
ALL COMPONENTS SEPARATELY FOR 15 MINUTES  
DO NOT KEEP ANY FABRIC IN CONTACT WITH DIRECT SUNLIGHT OR HARSH  
HIGH COLOURED AND WHITE FABRICS SEPARATELY  
IRON CLOTHES AT MODERATE TEMPERATURE DO NOT DRY FABRIC IN DIRECT SUNLIGHT  
(EXTRA LACES, HANGINGS AND ACCESSORIES ARE NOT INCLUDED)



**S**  
sheeshmahal®



#S-1320-D

**Top- GEORGETTE**  
**Bottom/Iner- SANTOON**  
**Dupatta- NAZMEEN**

**WASHING INSTRUCTIONS**  
DO NOT USE ANY TYPE OF BLEACH OR OTHER BLEACHING AGENTS  
BEFORE DYEING/COLOURING/FABRIC SHOULD BE SOAKED IN WATER  
ALL COMPONENTS SEPARATELY FOR 15 MINUTES  
DO NOT KEEP ANY FABRIC IN CONTACT WITH IRON OBJECTS TO AVOID COP MARKS  
HIGH COLOURED AND WHITE FABRICS SEPARATELY  
IRON CLOTHES AT MODERATE TEMPERATURE DO NOT DRY FABRIC IN DIRECT SUNLIGHT  
(EXTRA LACES/HANGINGS AND ACCESSORIES ARE NOT INCLUDED)



**S**  
sheeshmahal®



#S-1320-E

**Top- GEORGETTE**  
**Bottom/Iner- SANTOON**  
**Dupatta- NAZMEEN**

**WASHING INSTRUCTIONS**  
DO NOT USE ANY TYPE OF BLEACH OR OTHER BLEACHING AGENTS  
BEFORE DRYING. COLORED FABRIC SHOULD BE SOAKED IN WATER  
ALL COMPONENTS SEPARATELY FOR 15 MINUTES  
DO NOT KEEP ANY FABRIC IN CONTACT WITH DIRECT SUNLIGHT OR HARSH  
HIGH-COLOURED AND WHITE FABRICS SEPARATELY  
IRON CLOTHES AT MODERATE TEMPERATURE. DO NOT DRY FABRIC IN DIRECT SUNLIGHT  
(EXTRA LACES/HANGINGS AND ACCESSORIES ARE NOT INCLUDED)





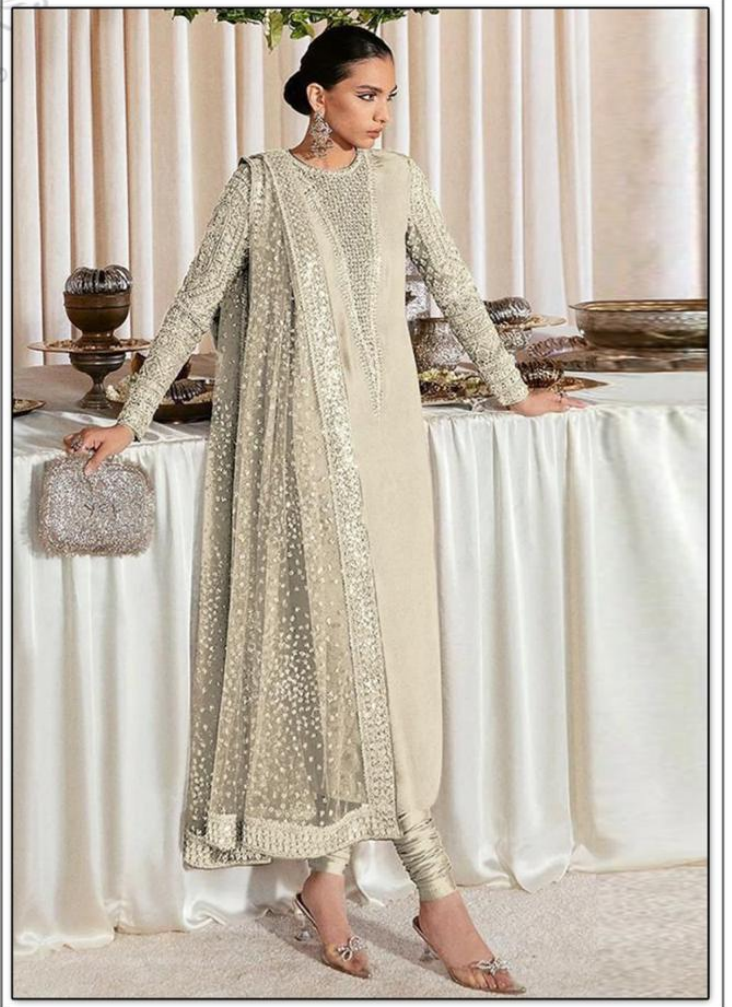
**S**  
sheeshmahal®



#S-1320-F

**Top- GEORGETTE**  
**Bottom/Iner- SANTOON**  
**Dupatta- NAZMEEN**

**WASHING INSTRUCTIONS**  
DO NOT USE ANY TYPE OF BLEACH OR STRONG BLEACHING AGENTS  
BEFORE CLOTHING DRYING SHOULD BE DONE IN SHADE  
ALL COMPONENTS WASHED FOR 15 MINUTES  
DO NOT KEEP WET FABRIC IN TRAYED ROOM IN ORDER TO AVOID CLIP MARKS  
KEEP HIGH COLOURED AND WHITE FABRICS SEPARATELY  
IRON CLOTHES AT MODERATE TEMPERATURE DO NOT DRY FABRIC IN DIRECT SUNLIGHT  
(EXTRA LACES/HANGINGS AND ACCESSORIES ARE NOT INCLUDED)



**S**  
sheeshmahal®



#S-1320-G

**Top- GEORGETTE**  
**Bottom/Iner- SANTOON**  
**Dupatta- NAZMEEN**

**WASHING INSTRUCTIONS**  
DO NOT USE ANY TYPE OF BLEACH OR STAIN REMOVING CHEMICALS  
BEFORE DRYING. COLORED FABRICS SHOULD BE SOAKED IN WATER  
ALL COMPONENTS SEPARATELY FOR 15 MINUTES  
DO NOT KEEP ANY FABRIC IN CONTACT WITH IRON OR OTHER TOUGH METALS  
HIGH-COLOURED AND WHITE FABRICS SEPARATELY  
IRON CLOTHES AT MODERATE TEMPERATURE. DO NOT DRY FABRIC IN DIRECT SUNLIGHT  
(EXTRA LACES, HANGINGS AND ACCESSORIES ARE NOT INCLUDED)

