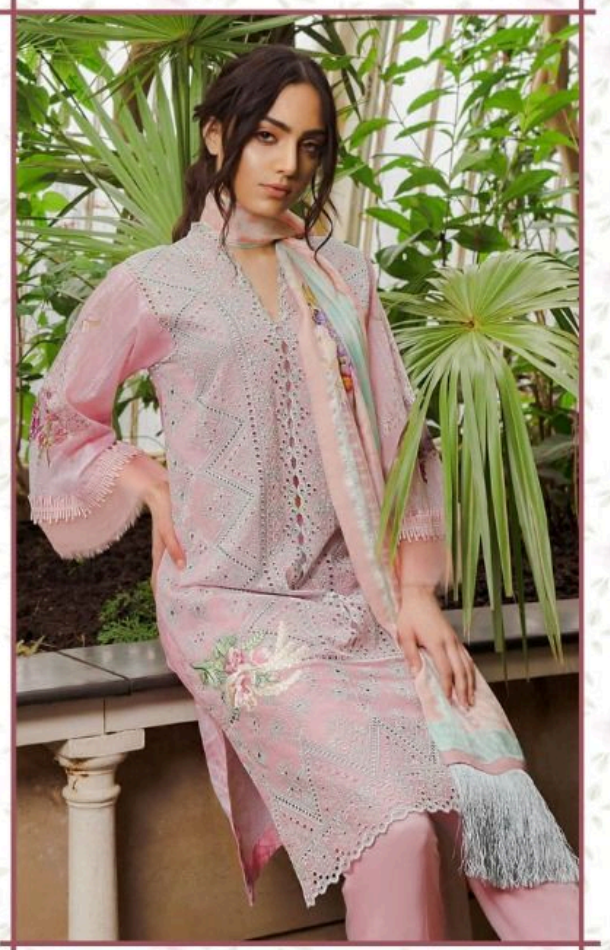


**Fepic**<sup>®</sup>



**ROSEMEEN**  
Chikankaari



QR

D.NO.46003

**WASHING INSTRUCTIONS**

DO NOT USE ANY TYPE OF BLEACH OR STAIN REMOVING CHEMICALS BEFORE CUTTING / STITCHING , FABRIC SHOULD BE SOAKED IN WATER ( ALL COMPONENTS SEPARATELY ) FOR 15 MINUTES

DO NOT KEEP WET FABRIC IN TWISTED FROM IN ORDER TO AVOID COPY MARKS I

WASH COLOURED AND WHITE FABRICS SEPARATELY

IRON CLOTHES AT MODERATE TEMPERATURE I DO NOT DRY FABRIC IN DIRECT SUNLIGHT ( EXTRA LACES, HANGINGS AND ACCESSORIES ARE NOT INDUDED )

**FABRIC DETAIL**

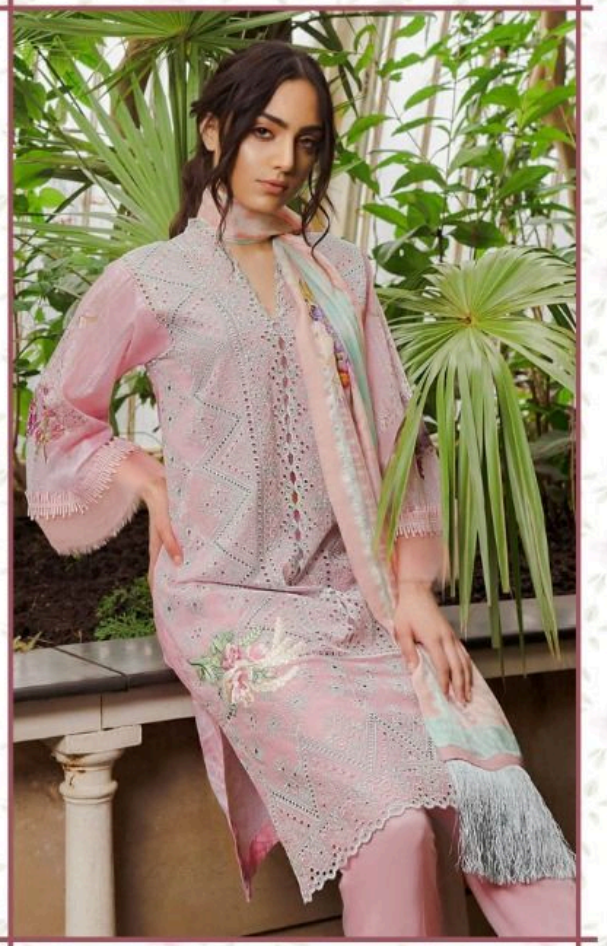
TOP-PURE COTTON CHIKEN WORK  
(SLEEVE DIGITAL PRINT)

DUPATTA-TUBBY SILK DIGITAL PRINTED

BOTTOM-SEMI LAWN



**Fepic**<sup>®</sup>



**ROSEMEEN**  
Chikankari



QR

D.NO.46003

**WASHING INSTRUCTIONS**

DO NOT USE ANY TYPE OF BLEACH OR STAIN REMOVING CHEMICALS  
BEFORE CUTTING / STITCHING , FABRIC SHOULD BE SOAKED IN WATER  
( ALL COMPONENTS SEPARATELY ) FOR 15 MINUTES

DO NOT KEEP WET FABRIC IN TWISTED FROM IN ORDER TO AVOID COPY MARKS |  
WASH COLOURED AND WHITE FABRICS SEPARATELY

IRON CLOTHES AT MODERATE TEMPERATURE | DO NOT DRY FABRIC IN DIRECT SUNLIGHT  
( EXTRA LACES, HANGINGS AND ACCESSORIES ARE NOT INLUDED )

**FABRIC DETAIL**

TOP-PURE COTTON CHIKEN WORK  
(SLEEVE DIGITAL PRINT)  
DUPATTA-TUBBY SILK DIGITAL PRINTED  
BOTTOM-SEMI LAWN