

Fepic®



QR



FABRIC DETAIL

TOP-GEORGETTE
INNER-SANTOON
BOTTOM-SANTOON
DUPATTA-NAZMEEN

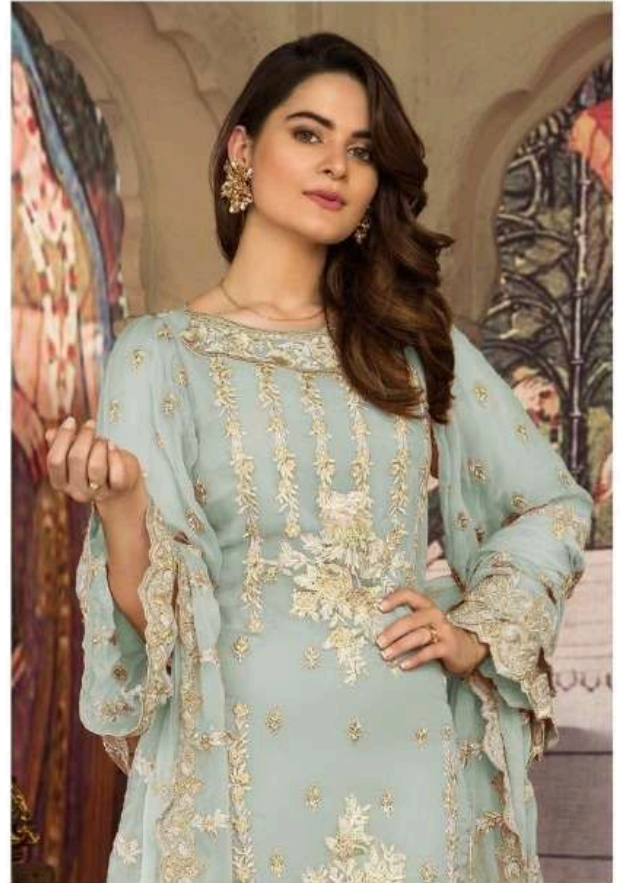
ROSEMEEN

FANTASY

WASHING INSTRUCTIONS

DO NOT USE ANY TYPE OF BLEACH OR STAIN REMOVING CHEMICALS
BEFORE CUTTING / STITCHING, FABRIC SHOULD BE SOAKED IN WATER
(ALL COMPONENTS SEPARATELY) FOR 15 MINUTES
DO NOT KEEP WET FABRIC IN TWISTED FORM IN ORDER TO AVOID COPY MARKS |
WASH COLOURED AND WHITE FABRICS SEPARATELY
IRON CLOTHES AT MODERATE TEMPERATURE | DO NOT DRY FABRIC IN DIRECT SUNLIGHT

Fepic[®]



QR



FABRIC DETAIL

TOP-GEORGETTE
INNER-SANTOON
BOTTOM-SANTOON
DUPATTA-NAZMEEN

ROSEMEEN

FANTASY

WASHING INSTRUCTIONS

DO NOT USE ANY TYPE OF BLEACH OR STAIN REMOVING CHEMICALS
BEFORE CUTTING / STITCHING, FABRIC SHOULD BE SOAKED IN WATER
(ALL COMPONENTS SEPARATELY) FOR 15 MINUTES
DO NOT KEEP WET FABRIC IN TWISTED FORM IN ORDER TO AVOID COPY MARKS |
WASH COLOURED AND WHITE FABRICS SEPARATELY
IRON CLOTHES AT MODERATE TEMPERATURE | DO NOT DRY FABRIC IN DIRECT SUNLIGHT

Fepic®



QR



FABRIC DETAIL

TOP-GEORGETTE
INNER-SANTOON
BOTTOM-SANTOON
DUPATTA-NAZMEEN

ROSEMEEN

FANTASY

WASHING INSTRUCTIONS

DO NOT USE ANY TYPE OF BLEACH OR STAIN REMOVING CHEMICALS
BEFORE CUTTING / STITCHING, FABRIC SHOULD BE SOAKED IN WATER
(ALL COMPONENTS SEPARATELY) FOR 15 MINUTES
DO NOT KEEP WET FABRIC IN TWISTED FORM IN ORDER TO AVOID COPY MARKS |
WASH COLOURED AND WHITE FABRICS SEPARATELY
IRON CLOTHES AT MODERATE TEMPERATURE | DO NOT DRY FABRIC IN DIRECT SUNLIGHT