

ROSEMEEN
ROYAL LUXURY
D.NO.40005

FABRIC DETAI
TOP-GEORGETTE
INNER-SANTOON
BOTTOM-SANTOON
DUPATTA-NAZMEEN



QR

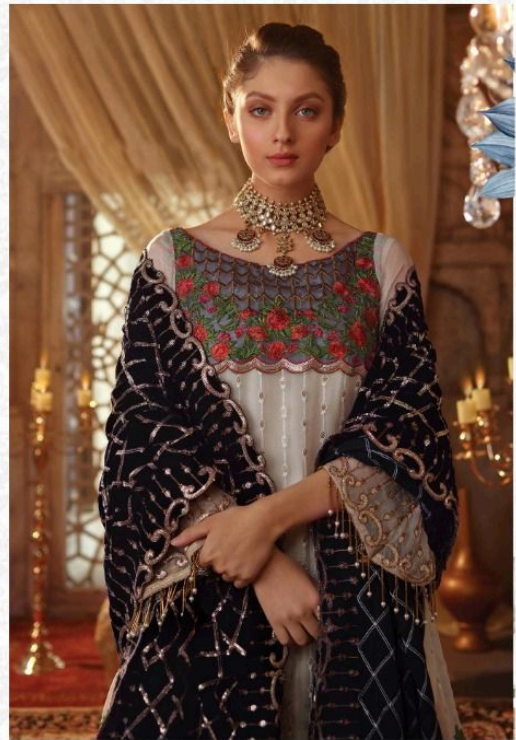
WASHING INSTRUCTIONS
DO NOT USE ANY TYPE OF BLEACH OR STAIN REMOVING CHEMICALS
BEFORE CUTTING / STITCHING. FABRIC SHOULD BE SOAKED IN WATER
(ALL COMPONENTS SEPARATELY) FOR 15 MINUTES
DO NOT KEEP WET FABRIC IN TWISTED FROM IN ORDER TO AVOID COPY MARKS !
WASH COLOURED AND WHITE FABRICS SEPARATELY
IRON CLOTHES AT MODERATE TEMPERATURE ! DO NOT DRY FABRIC IN DIRECT SUNLIGHT
(EXTRA LACES, HANGINGS AND ACCESSORIES ARE NOT INDUDED)



ROSEMEEEN

Royal luxury

D no 40005



ROSEMEEN
ROYAL LUXURY
D.NO.4005

FABRIC DETAI
TOP-GEORGETTE
INNER-SANTOON
BOTTOM-SANTOON
DUPATTA-NAZMEEN



QR

WASHING INSTRUCTIONS
DO NOT USE ANY TYPE OF BLEACH OR STAIN REMOVING CHEMICALS
BEFORE CUTTING / STITCHING . FABRIC SHOULD BE SOAKED IN WATER
(ALL COMPONENTS SEPARATELY) FOR 15 MINUTES
DO NOT KEEP WET FABRIC IN TWISTED FROM IN ORDER TO AVOID COPY MARKS !
WASH COLOURED AND WHITE FABRICS SEPARATELY
IRON CLOTHES AT MODERATE TEMPERATURE ! DO NOT DRY FABRIC IN DIRECT SUNLIGHT
(EXTRA LACES, HANGINGS AND ACCESSORIES ARE NOT INDUDED)