

Fepic®



QR

WASHING INSTRUCTIONS

DO NOT USE ANY TYPE OF BLEACH OR STAIN REMOVING CHEMICALS
BEFORE CUTTING / STITCHING , FABRIC SHOULD BE SOAKED IN WATER
(ALL COMPONENTS SEPARATELY) FOR 15 MINUTES
DO NOT KEEP WET FABRIC IN TWISTED FROM IN ORDER TO AVOID COPY MARKS |
WASH COLOURED AND WHITE FABRICS SEPARATELY
IRON CLOTHES AT MODERATE TEMPERATURE | DO NOT DRY FABRIC IN DIRECT SUNLIGHT
(EXTRA LACES, HANGINGS AND ACCESSORIES ARE NOT INDUDED)



D.NO.29007

ROSEMEEN
crimson

FABRIC DETAIL

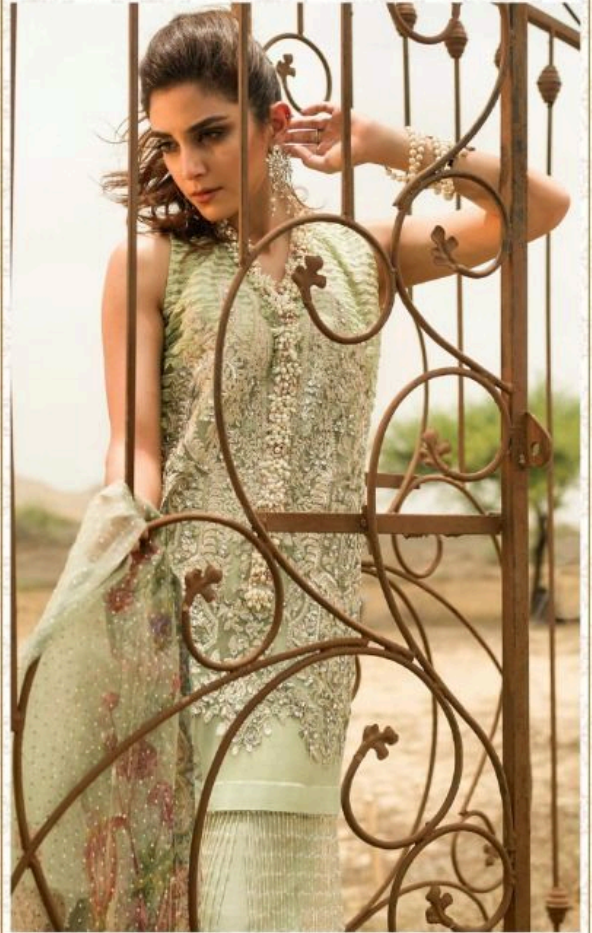
TOP:- NET
DUPATTA :- ORGANZA
DIGITAL PRINTED
BOTTOM :- SANTOON
INNER :-SANTOON



ROSEMEEN
crimson

D no 29007

Fepic®



QR

WASHING INSTRUCTIONS

DO NOT USE ANY TYPE OF BLEACH OR STAIN REMOVING CHEMICALS
BEFORE CUTTING / STITCHING , FABRIC SHOULD BE SOAKED BE SOAKED IN WATER
(ALL COMPONENTS SEPARATELY) FOR 15 MINUTES
DO NOT KEEP WET FABRIC IN TWISTED FROM IN ORDER TO AVOID COPY MARKS |
WASH COLOURED AND WHITE FABRICS SEPARATELY
IRON CLOTHES AT MODERATE TEMPERATURE | DO NOT DRY FABRIC IN DIRECT SUNLIGHT
(EXTRA LACES, HANGINGS AND ACCESSORIES ARE NOT INDUDED)


D.NO.29007

ROSEMEEN
crimson

FABRIC DETAIL

TOP:- NET
DUPATTA :- ORGANZA
DIGITAL PRINTED
BOTTOM :- SANTOON
INNER :-SANTOON