



PURE PASHMINA COLLECTION

Naaz & Patiyala

PATIYALA STYLE NEVER DIE






Naaz & Patiyala



Unique & different to the rest, appreciation of beautiful.
Conformity is the only real fashion crime.
every day is a fashion show &
the word is the runway.

Most popular
ELEGANCE DESIGNS

S-506 - 002





Naaz & Patiyala



S-506 - 003





Mystic
BEAUTY OF SHADES

This season, accessories help you describe the mood in great evening dresses and formal gowns.

S-506 - 006



Naaz & Paliyala



Naaz & Patiyala



Classiness to
YOUR WARDROBE

Simplicity is the ultimate form of sophistication.
It's not about brand! It's about style!
People will stare make it worth their while.



S-506 - 001





Naaz & Patiyala



S-506 - 005





Naaz & Patiyala



Celebrate
GLASSY SIDE

Turn every head your way as you stroll across in an outfit from the new Indian cross collection. Celebrate your classy side with this perfect concoction of chic style.



S-506 - 004





Naaz & Patisyala



Fashion is life & just like life, you must always express your feelings freely. Why fit in when you were born to stand out.

World with
BEAUTY DESIGNS

S-506 - 008



Turnover
WITH DESIGNS

We bring you an exclusive fresh look with the designs of collection. Soar fashion welcomes the change of season by turning the page on the past and introducing a host and fabulous trends.

S-506 - 007



Naaz & Patiyala

Fabulous fashion
TIMELESS BEAUTY

Everything has beauty, but not everyone sees it.
Beauty sees the attention personally onto the part.



S-506 - 009



Naaz & Fatigata



S-506 - 001



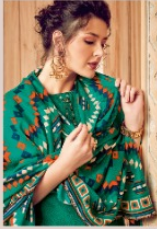
S-506 - 002



S-506 - 007



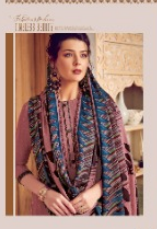
S-506 - 008



S-506 - 003



S-506 - 004



S-506 - 009



S-506 - 010



S-506 - 005



S-506 - 006



Explore
COLOURFULL DESIGNS

When we choose to take inspiration from Indian beauty, the result is here a lot of color, energy, tell a story about great fashion and trends.



S-506 - 010



Naaz & Patiyala





PURE PASHMINA COLLECTION

Naaz & Patiyala

PATIYALA STYLE NEVER DIE

