

ANTILA



Belliza[®]
Designer Studio

ANTILA



Belliza[®]
Designer Studio



Belliza®
Designer Studio
www.bellizadesignerstudio.com

ANTILA

Wardrobe with exotically patterned collection and multicolored dupatta enhances feminine touch to your personality.



ANTILA

Mantón de seda con bordado floral y botones
de colores vivos en el cuello.
Luz de seda con bordado floral
y botones vivos en el cuello.
SKU - 1872



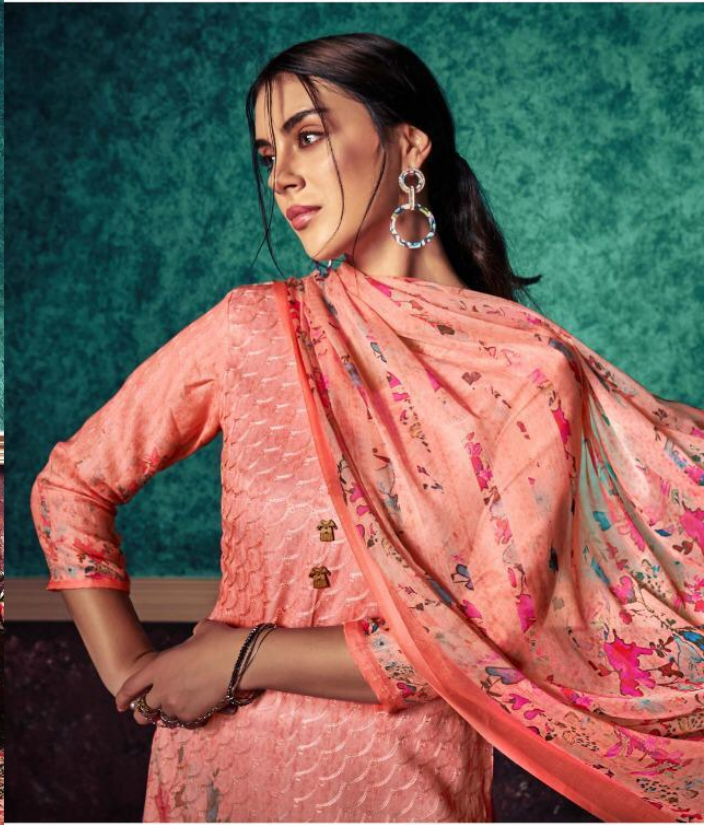
BelliZa
Designer Studio
www.bellizadesignerstudio.com



Belliza
Designer Studio
www.bellizadesignerstudio.com



ANVILA



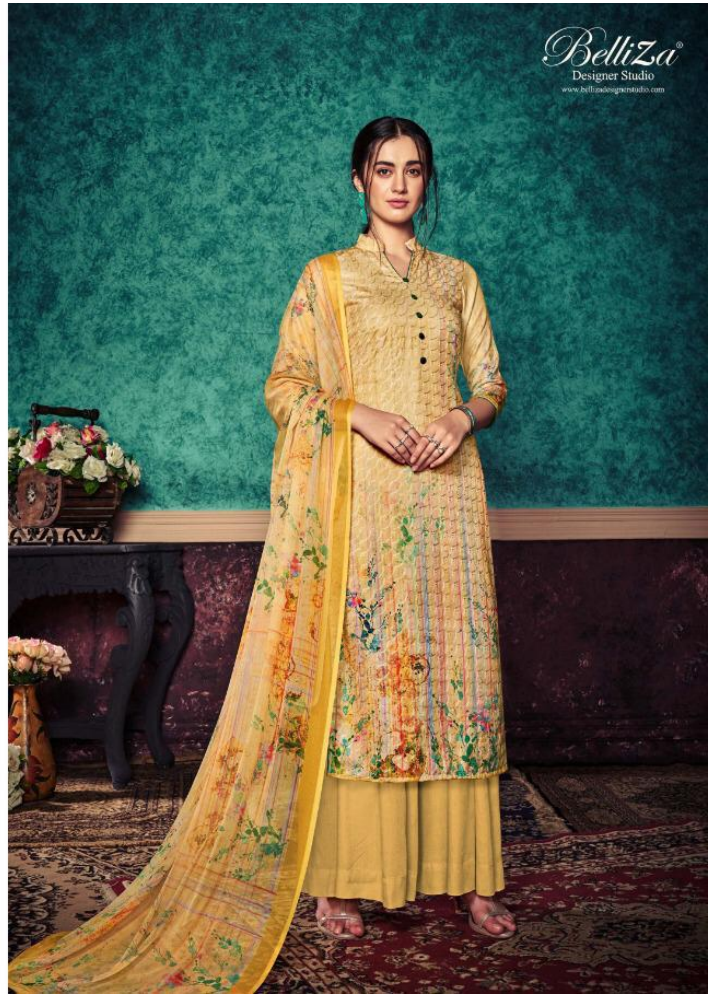
Wardrobe with essentially patterned collection named multicolored
shapata visharva, karnata touch to your personality.
3350 - 001

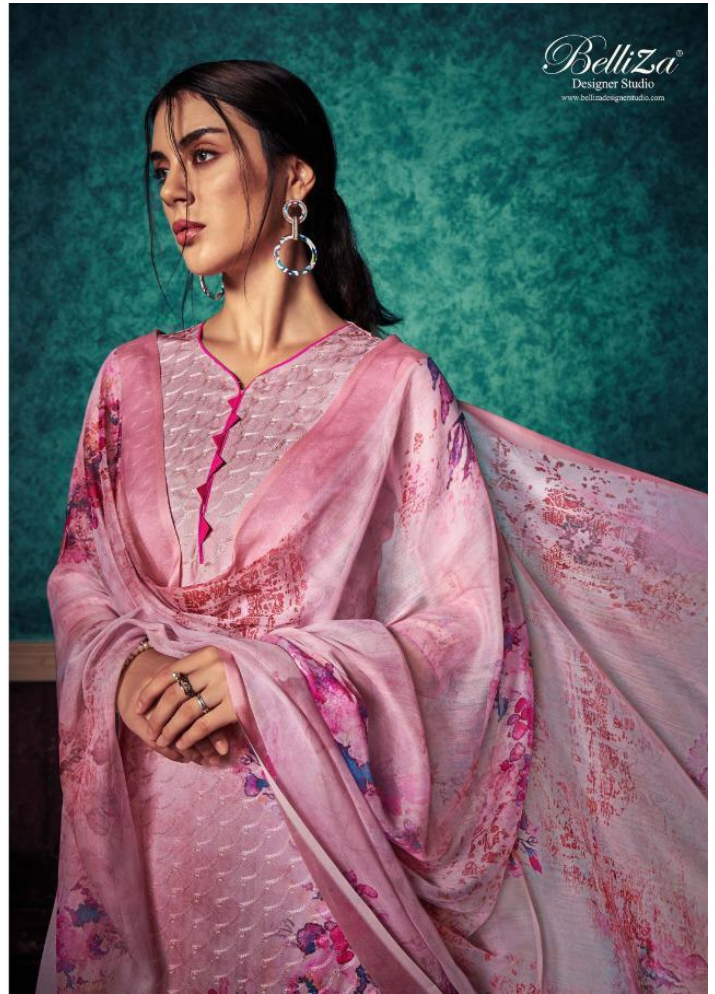
ANTILA

Handmade with intricately patterned
collection and multi-colored
designs on mixed fabrics,
touches your personality.
330 - 00A



BellZa
Designer Studio
www.bellzadesignerstudio.com

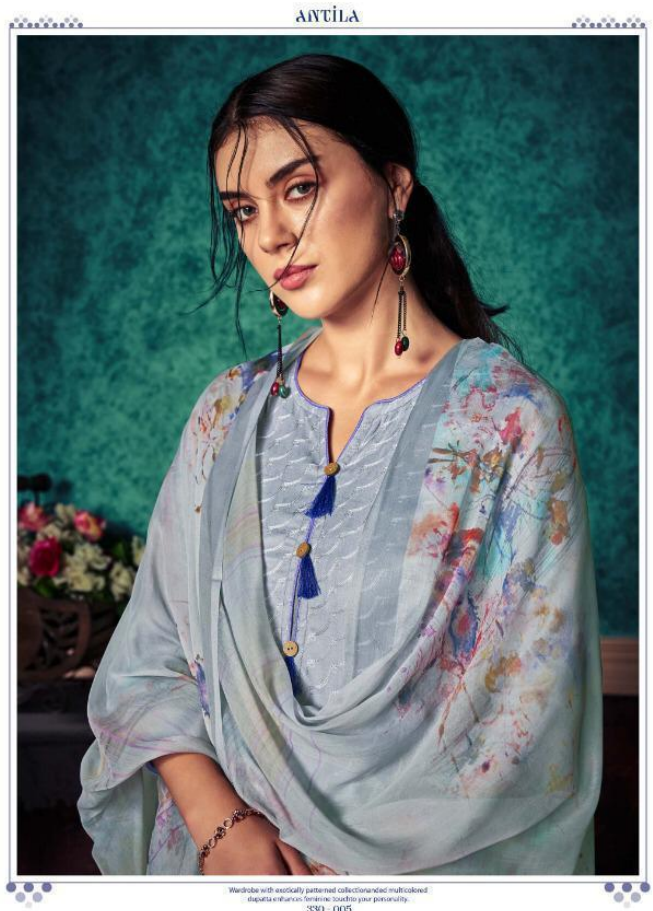






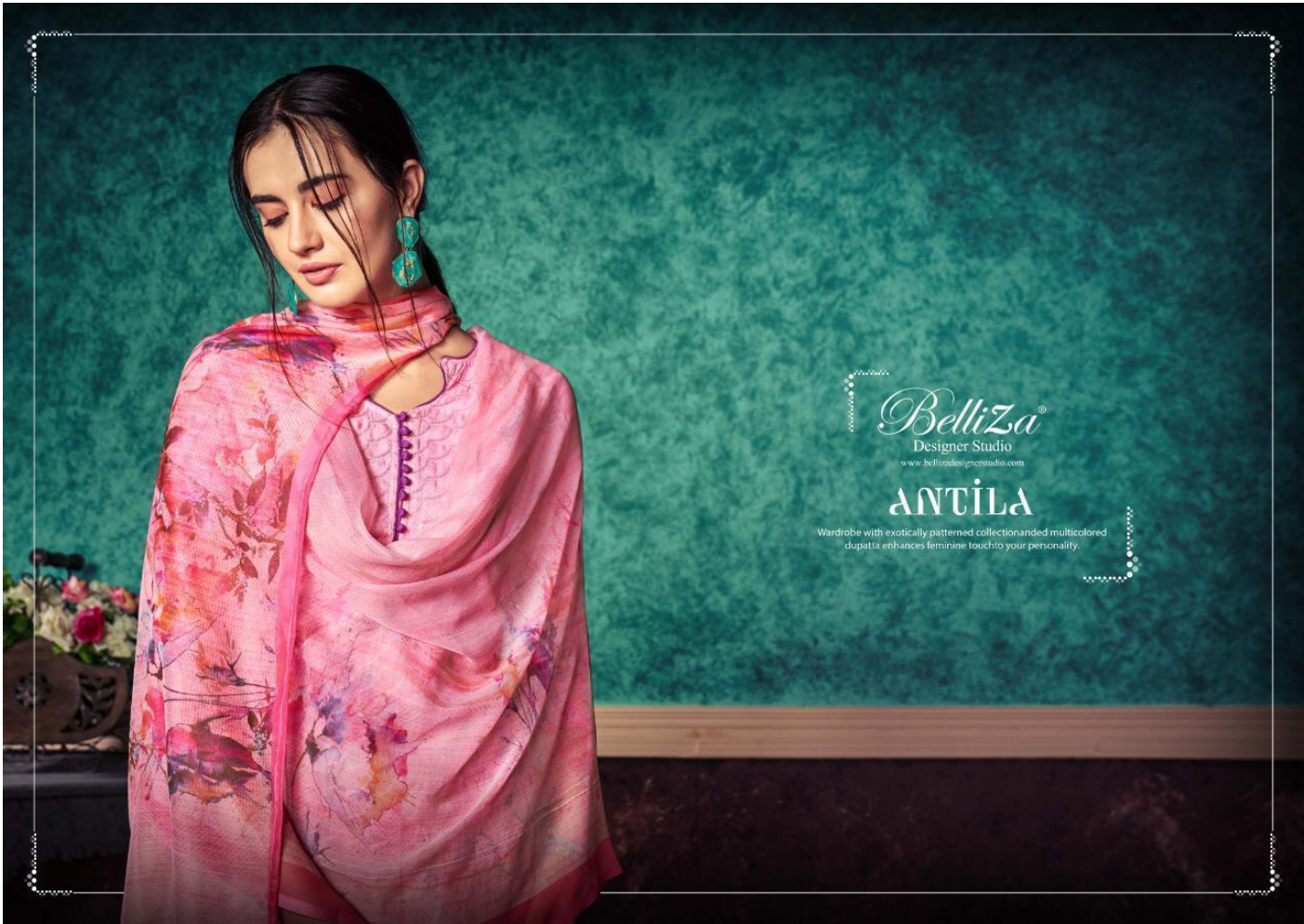


BelliZa[®]
Designer Studio
www.bellizadesignerstudio.com



AVTILA

Wardrobe with exactly patterned collection and multicolored
inspired elements feature best for personality
330 - 005



Belliza®
Designer Studio
www.bellizadesignersstudio.com

ANTILA

Wardrobe with exotically patterned collection and multicolored dupatta enhances feminine touch to your personality.

Belliza®
Designer Studio
www.bellizadesignerstudio.com



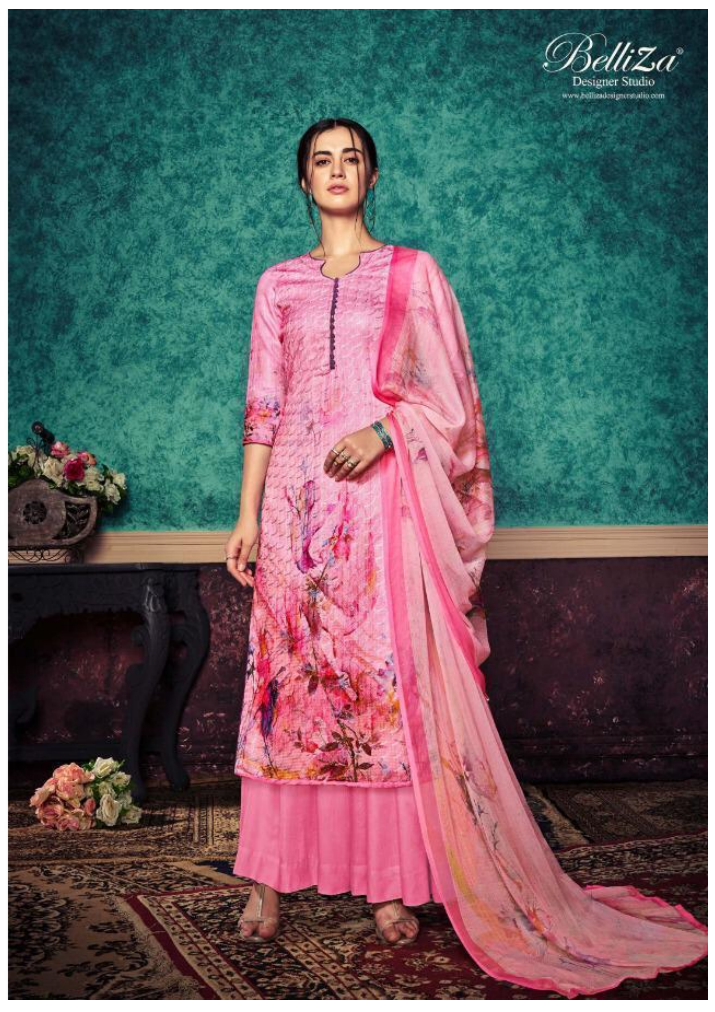
ANTILA
Woven with intricate
pattern of collection and
multi color of dupatta & inner
fabric with floral print & sequins.
330 - 009

AVILA

Washable, ultra-soft, fully patterned
collection made of multicolored
finest silk fabric, designed
to suit your personality.
330 - 007



Belliza
Designer Studio
www.bellizadesignerstudio.com







330-001



330-002



330-003



330-004



330-005



330-006



330-007



330-008

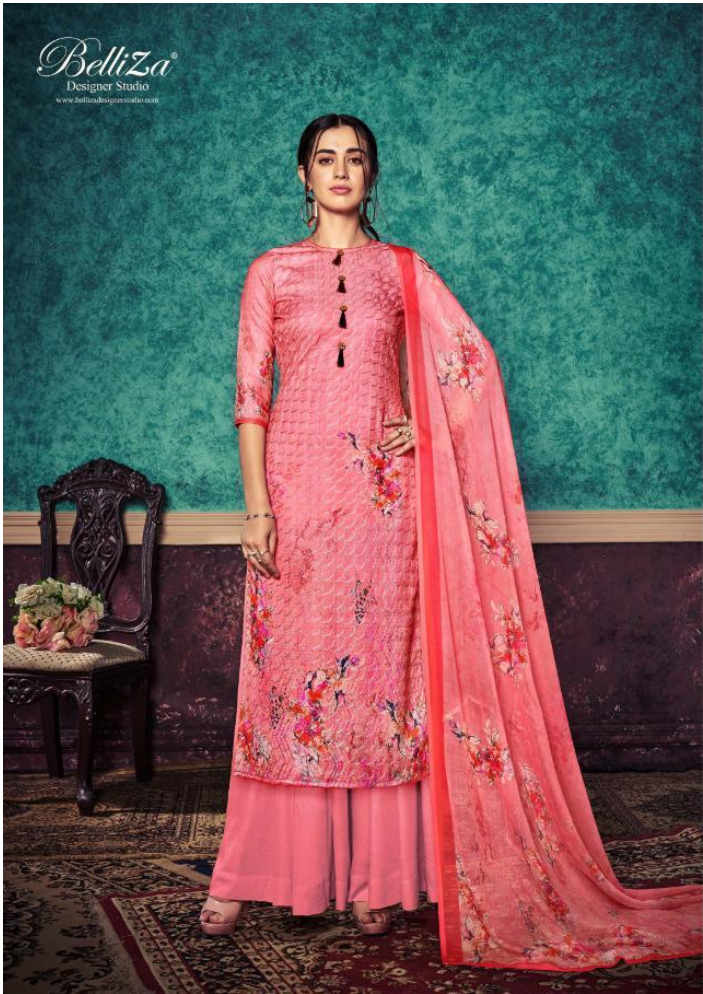


330-009



330-010

Belliza
Designer Studio
www.bellizastudio.com
ANTILA



Belliza
Designer Studio
www.bellizadesignstudio.com



ANTILA
Wardrobe with carefully gathered
decorative elements of
dupatta enhances form and
elegance and personality.
330 - 090